

Impact of Sequestration, FY 2013

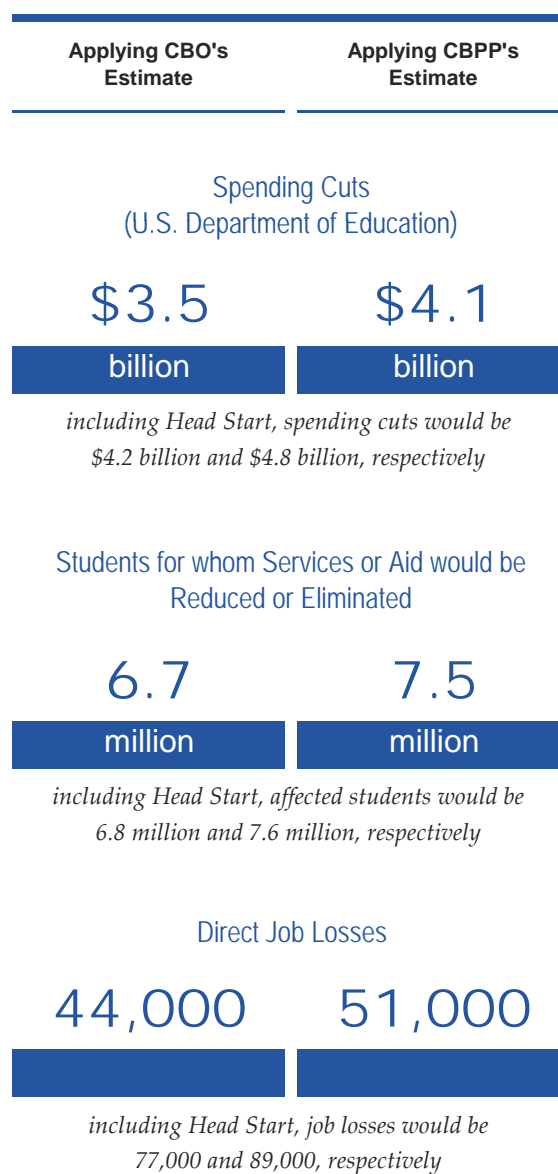
Federal Education-Related Discretionary Programs



The failure of the Joint Select Committee on Deficit Reduction to produce a bill identifying budgetary savings of at least \$1.2 trillion over ten years (fiscal years 2012-2021) has triggered an automatic spending reduction process that includes sequestration (the cancellation of budgetary resources) to take effect on January 2, 2013, as stipulated in the Budget Control Act of 2011 (Public Law 112-25). For fiscal year 2013, automatic, across-the-board budget cuts will be applied to most programs, including all discretionary education programs, except Federal Pell Grants.

For subsequent fiscal years (2014-2021), the discretionary spending reductions are achieved through a downward adjustment of statutory limits on discretionary spending divided into two new categories -- defense and nondefense spending. The Congressional Budget Office (CBO) has estimated that nonexempt discretionary programs would be reduced by 7.8 percent in fiscal year 2013. A more detailed analysis conducted by the Center on Budget and Policy Priorities (CBPP) indicates that nonexempt, nondefense discretionary programs would be reduced by 9.1 percent in 2013.

The accompanying chart, as well as those on the following pages, illustrates the impact under both estimates of an across-the-board reduction to nonexempt federal education programs beginning in January 2013. Since appropriations for fiscal year 2013 (which begins on October 1, 2012) will not be determined for many months, the estimates are based on current (FY 2012) funding levels. Assuming sequestration would begin as scheduled, funding for the U.S. Department of Education would be reduced by \$3.5 billion under CBO's estimate; and by \$4.1 billion under CBPP's estimate, affecting millions of students and leading to potentially significant job losses for educators and other school employees.



FEDERAL EDUCATION-RELATED DISCRETIONARY PROGRAMS
Impact of Sequestration, FY 2013



Program	Applying CBO's Estimate			Applying the Center on Budget & Policy Priorities' Estimate		
	Funding Cuts (in millions)*	Students Impacted*	Job Losses*	Funding Cuts (in millions)*	Students Impacted*	Job Losses*
U.S. Department of Education Discretionary Programs						
<i>Elementary & Secondary Education</i>						
Grants to Local Educational Agencies (ESEA Title I, Part A)	\$1,132.3	1,496,300	15,900	\$1,321.0	1,745,700	18,600
School Improvement State Grants (ESEA section 1003(g))	41.6	46,300	590	48.6	54,100	680
State Agency Programs: Migrant (ESEA I-C) and Neglected & Delinquent (ESEA I-D)	34.6	30,000	470	40.4	35,000	550
Impact Aid Basic Support Payments (ESEA VIII section 8003(b))	90.0	72,500	1,300	105.0	84,600	1,520
Improving Teacher Quality State Grants (ESEA II, Part A)	192.4	---	2,630	224.5	---	3,060
Mathematics & Science Partnerships (ESEA II-B)	11.7	---	170	13.6	---	190
21st Century Community Learning Centers (ESEA IV-B)	89.8	136,500	1,250	104.8	159,250	1,460
State Assessments (ESEA VI-A-1)	30.4	---	420	35.4	---	490
Education for Homeless Children and Youths (MVHAA Title VII-B)	5.1	67,400	70	5.9	78,600	80
Rural Education (ESEA VI-B)	14.0	345,600	210	16.3	403,250	250
Indian Education Grants to Local Educational Agencies (ESEA VII, Part A-1)	8.3	37,000	120	9.6	43,100	140
English Language Acquisition (ESEA III, Part A)	57.1	351,400	720	66.6	409,900	830
All Other Elementary & Secondary Education	182.3	---	2,450	212.7	---	2,850
<i>Subtotal, Elementary & Secondary Education</i>	1,889.4	2,583,000 **	26,300	2,204.4	3,013,500 **	30,700
<i>Special Education</i>						
Special Education Grants to States (IDEA-B-611)	903.1	459,400	12,500	1,053.6	536,000	14,600
Preschool grants (IDEA-B-619)	29.1	57,500	400	33.9	67,100	470
Grants for infants and families (IDEA-C)	34.5	26,700	480	40.3	31,200	560
All Other Special Education	19.3	---	260	22.5	---	300
<i>Subtotal, Special Education</i>	986.0	543,600	13,640	1,150.3	634,300	15,930
<i>Rehabilitation Services and Disability Research</i>						
	47.2	---	630	55.1	---	740
<i>Career, Technical, and Adult Education</i>						
Career and Technical Education State Grants (Carl D. Perkins CTEA Title I)	87.6	1,214,500	1,240	102.2	1,417,000	1,450
Adult Basic and Literacy Education State Grants (AEFLA and WIA section 503)	46.4	191,700	630	54.1	223,700	740
All Other Career, Technical, and Adult Education	1.5	---	20	1.7	---	25
<i>Subtotal, Career, Technical, and Adult Education</i>	135.5	1,406,200	1,890	158.1	1,640,700	2,215
<i>Federal Student Financial Assistance</i>						
Federal Pell Grants (HEA IV-A-1)	exempt	---	---	exempt	---	---
Federal Supplemental Educational Opportunity Grants (HEA IV-A-3)	57.3	1,339,100	---	66.8	1,339,100	---
Federal Work-Study (HEA IV-C)	76.2	713,100	---	88.9	713,100	---
<i>Subtotal, Federal Student Financial Assistance</i>	133.5	2,052,200 **	---	155.7	2,052,200 **	---
<i>Higher Education</i>						
Aid for Institutional Development (HEA)	49.7	---	160	58.0	---	190
Federal TRIO Programs (HEA IV-A-2, Chapter 1)	65.5	65,600	210	76.4	76,540	250
GEAR UP (HEA IV-A-2, Chapter 2)	23.6	59,000	160	27.5	68,800	185
All Other Higher Education	26.9	---	90	31.4	---	100
<i>Subtotal, Higher Education</i>	165.7	124,600 **	620	193.3	145,340 **	725
<i>Institute of Education Sciences</i>						
	46.3	---	250	54.0	---	290
<i>Departmental Management</i>						
	128.9	---	460	150.3	---	540
Total, U.S. Department of Education Discretionary Programs	\$3,532.5	6,709,600 **	43,790	\$4,121.2	7,486,040 **	51,140
<i>Other Federal Education-Related Programs</i>						
Head Start (HSA section 639)	621.5	75,500	32,720	725.1	88,100	38,180
Total, Federal Education-Related Discretionary Programs	\$4,154.0	6,785,100 **	76,510	\$4,846.4	7,574,140 **	89,320

*Rounded estimates. ** Totals may include some duplication. Some students may receive services under more than one program.

For more information, contact Tom Zembar at 202.822.7109 or TZembar@nea.org. Updated on January 31, 2012.

Impact of Sequestration, FY 2013

Grants to Local Educational Agencies (ESEA Title I, Part A)



State	Applying CBO's Estimate			Applying the Center on Budget & Policy Priorities' Estimate		
	Funding Cuts (in millions)	Students Impacted	Job Losses	Funding Cuts (in millions)	Students Impacted	Job Losses
Alabama	\$17.8	27,531	277	\$20.8	32,115	323
Alaska	3.2	3,077	27	3.8	3,593	31
Arizona	24.7	19,740	415	28.8	23,031	484
Arkansas	11.6	19,310	186	13.5	22,523	216
California	128.7	259,068	1,448	150.1	302,242	1,690
Colorado	11.4	12,765	170	13.3	14,890	199
Connecticut	7.5	7,405	85	8.8	8,632	99
Delaware	3.8	5,085	40	4.5	5,938	47
District of Columbia	3.9	5,411	42	4.6	6,317	49
Florida	61.1	74,127	866	71.4	86,520	1,011
Georgia	41.4	63,784	659	48.3	74,426	769
Hawaii	3.8	7,116	48	4.4	8,306	56
Idaho	4.2	6,108	69	4.9	7,123	80
Illinois	49.0	42,361	593	57.2	49,417	692
Indiana	19.9	13,194	302	23.2	15,387	353
Iowa	5.7	5,423	88	6.7	6,322	103
Kansas	8.6	8,454	170	10.0	9,859	198
Kentucky	17.0	26,214	324	19.8	30,582	378
Louisiana	22.2	35,631	317	25.9	41,565	370
Maine	4.0	1,967	61	4.6	2,295	72
Maryland	15.1	11,577	164	17.6	13,509	191
Massachusetts	15.7	20,498	173	18.3	23,903	201
Michigan	42.3	38,725	507	49.3	45,181	592
Minnesota	12.1	11,887	156	14.1	13,859	182
Mississippi	14.6	26,054	279	17.1	30,394	325
Missouri	17.3	15,099	277	20.1	17,606	322
Montana	3.9	4,006	61	4.5	4,678	72
Nebraska	5.3	6,383	84	6.1	7,445	99
Nevada	8.9	7,211	111	10.4	8,417	130
New Hampshire	3.4	1,672	51	4.0	1,952	60
New Jersey	22.2	23,114	204	25.9	26,949	238
New Mexico	9.4	13,601	148	11.0	15,869	173
New York	91.8	92,577	905	107.1	108,045	1,057
North Carolina	31.0	35,652	550	36.1	41,593	642
North Dakota	3.1	1,885	49	3.6	2,201	57
Ohio	44.5	43,855	592	51.9	51,153	690
Oklahoma	12.1	25,423	215	14.2	29,652	250
Oregon	11.4	13,587	145	13.3	15,846	169
Pennsylvania	43.5	40,845	533	50.8	47,646	622
Rhode Island	3.9	4,037	39	4.6	4,710	45
South Carolina	16.8	18,244	259	19.6	21,282	302
South Dakota	3.9	2,889	76	4.5	3,374	89
Tennessee	21.6	34,847	368	25.2	40,653	429
Texas	108.2	242,360	1,884	126.2	282,787	2,198
Utah	7.2	9,668	114	8.4	11,278	133
Vermont	3.0	3,164	41	3.5	3,694	48
Virginia	17.4	14,745	258	20.3	17,192	301
Washington	16.3	17,608	184	19.1	20,533	214
West Virginia	6.7	9,078	97	7.8	10,588	113
Wisconsin	17.7	17,024	215	20.6	19,861	250
Wyoming	2.9	2,125	45	3.4	2,481	52
Puerto Rico	38.1	39,725	771	44.5	46,355	899
Outlying Areas/Indian Set Aside	11.3	3,377	193	13.2	3,925	225
Undistributed	0.0	-	-	0.0	-	-
National	\$1,132.3	1,496,309	15,935	\$1,321.0	1,745,694	18,591

Source: NEA calculations from U.S. Department of Education budget data based on analysis from the Congressional Budget Office (CBO) and the Center on Budget and Policy Priorities. For more information, contact Tom Zembar at 202.822.7109 or TZembar@nea.org. As of January 31, 2012.

Impact of Sequestration, FY 2013

School Improvement State Grants (ESEA section 1003(g))



State	Applying CBO's Estimate			Applying the Center on Budget & Policy Priorities' Estimate		
	Funding Cuts (in millions)	Students Impacted	Job Losses	Funding Cuts (in millions)	Students Impacted	Job Losses
Alabama	\$0.64	428	10	\$0.75	500	12
Alaska	0.12	102	1	0.14	119	1
Arizona	0.91	363	15	1.06	424	18
Arkansas	0.45	322	7	0.53	376	8
California	4.91	6,937	55	5.72	8,093	64
Colorado	0.45	819	7	0.52	956	8
Connecticut	0.30	766	3	0.35	893	4
Delaware	0.12	129	1	0.14	150	1
District of Columbia	0.14	346	2	0.17	403	2
Florida	2.19	6,547	31	2.55	7,638	36
Georgia	1.50	1,733	24	1.75	2,022	28
Hawaii	0.14	-	2	0.16	-	2
Idaho	0.17	126	3	0.19	147	3
Illinois	1.84	985	22	2.15	1,150	26
Indiana	0.73	299	11	0.85	349	13
Iowa	0.22	861	3	0.26	1,005	4
Kansas	0.35	210	7	0.41	245	8
Kentucky	0.66	524	13	0.77	611	15
Louisiana	0.79	148	11	0.93	173	13
Maine	0.15	178	2	0.18	208	3
Maryland	0.53	523	6	0.61	610	7
Massachusetts	0.61	567	7	0.72	661	8
Michigan	1.53	1,513	18	1.79	1,765	21
Minnesota	0.46	598	6	0.54	698	7
Mississippi	0.53	415	10	0.62	484	12
Missouri	0.70	1,260	11	0.82	1,470	13
Montana	0.13	33	2	0.15	39	2
Nebraska	0.19	90	3	0.22	105	4
Nevada	0.28	685	4	0.33	800	4
New Hampshire	0.11	185	2	0.13	216	2
New Jersey	0.84	739	8	0.98	862	9
New Mexico	0.32	272	5	0.38	318	6
New York	3.22	2,408	32	3.76	2,809	37
North Carolina	1.13	1,004	20	1.32	1,172	23
North Dakota	0.10	4	2	0.11	4	2
Ohio	1.64	1,535	22	1.91	1,791	25
Oklahoma	0.44	551	8	0.51	642	9
Oregon	0.45	484	6	0.53	565	7
Pennsylvania	1.53	3,868	19	1.78	4,512	22
Rhode Island	0.14	239	1	0.16	278	2
South Carolina	0.63	655	10	0.74	764	11
South Dakota	0.13	62	2	0.15	72	3
Tennessee	0.77	815	13	0.90	951	15
Texas	3.99	2,328	69	4.65	2,716	81
Utah	0.24	403	4	0.28	470	4
Vermont	0.10	395	1	0.11	461	2
Virginia	0.69	833	10	0.81	971	12
Washington	0.65	780	7	0.76	910	8
West Virginia	0.26	549	4	0.31	641	4
Wisconsin	0.61	687	7	0.71	802	9
Wyoming	0.09	39	1	0.11	45	2
Puerto Rico	1.42	-	29	1.65	-	33
Outlying Areas/Indian Set Aside	0.39	-	7	0.46	-	8
Undistributed	0.00	-	-	0.00	-	-
National	\$41.62	46,341	586	\$48.55	54,065	684

Source: NEA calculations from U.S. Department of Education budget data based on analysis from the Congressional Budget Office (CBO) and the Center on Budget and Policy Priorities. For more information, contact Tom Zembar at 202.822.7109 or TZembar@nea.org. As of January 31, 2012.

Impact of Sequestration, FY 2013

Impact Aid Basic Support Payments (ESEA VIII, section 8003(b))



State	Applying CBO's Estimate			Applying the Center on Budget & Policy Priorities' Estimate		
	Funding Cuts (in millions)	Students Impacted	Job Losses	Funding Cuts (in millions)	Students Impacted	Job Losses
Alabama	\$0.21	1,655	3	\$0.25	1,930	4
Alaska	11.21	1,868	93	13.08	2,179	108
Arizona	13.79	3,085	232	16.08	3,599	270
Arkansas	0.02	183	0	0.03	213	0
California	4.97	4,085	56	5.80	4,766	65
Colorado	1.40	1,243	21	1.63	1,450	24
Connecticut	0.33	428	4	0.39	500	4
Delaware	0.002	28	0	0.002	33	0
District of Columbia	0.07	427	1	0.08	498	1
Florida	0.46	3,412	7	0.54	3,980	8
Georgia	1.69	3,065	27	1.97	3,576	31
Hawaii	3.52	1,578	44	4.11	1,841	52
Idaho	0.44	277	7	0.52	323	9
Illinois	1.46	1,063	18	1.71	1,240	21
Indiana	0.01	211	0	0.01	246	0
Iowa	0.02	24	0	0.03	28	0
Kansas	1.91	672	38	2.23	784	44
Kentucky	0.05	640	1	0.06	747	1
Louisiana	0.65	495	9	0.76	577	11
Maine	0.17	187	3	0.19	218	3
Maryland	0.40	2,830	4	0.46	3,301	5
Massachusetts	0.03	470	0	0.04	548	0
Michigan	0.34	179	4	0.39	209	5
Minnesota	1.48	358	19	1.72	417	22
Mississippi	0.13	502	2	0.15	586	3
Missouri	1.71	495	27	2.00	577	32
Montana	3.42	744	54	3.99	869	63
Nebraska	1.52	410	25	1.78	478	29
Nevada	0.23	824	3	0.27	961	3
New Hampshire	0.001	17	0	0.001	20	0
New Jersey	0.92	430	8	1.07	502	10
New Mexico	7.66	2,171	121	8.93	2,533	141
New York	1.80	5,936	18	2.10	6,926	21
North Carolina	1.11	3,226	20	1.30	3,764	23
North Dakota	2.30	379	37	2.68	442	43
Ohio	0.11	947	2	0.13	1,105	2
Oklahoma	2.76	2,545	49	3.22	2,969	57
Oregon	0.25	100	3	0.29	117	4
Pennsylvania	0.07	1,093	1	0.08	1,275	1
Rhode Island	0.11	186	1	0.13	216	1
South Carolina	0.11	1,145	2	0.13	1,335	2
South Dakota	4.07	686	80	4.75	801	93
Tennessee	0.29	1,390	5	0.34	1,622	6
Texas	7.97	5,216	139	9.30	6,086	162
Utah	0.60	1,082	9	0.70	1,263	11
Vermont	0.001	8	0	0.001	10	0
Virginia	2.78	8,313	41	3.24	9,698	48
Washington	3.30	2,678	37	3.86	3,124	43
West Virginia	0.001	16	0	0.001	18	0
Wisconsin	0.97	351	12	1.14	410	14
Wyoming	1.01	445	15	1.17	519	18
Puerto Rico	0.11	2,435	2	0.13	2,841	3
Outlying Areas	0.01	312	0	0.02	364	0
Undistributed	0.00	-	-	0.00	-	-
National	\$89.98	72,544	1,304	\$104.97	84,635	1,521

Source: NEA calculations from U.S. Department of Education budget data based on analysis from the Congressional Budget Office (CBO) and the Center on Budget and Policy Priorities. For more information, contact Tom Zembar at 202.822.7109 or TZembar@nea.org. As of January 31, 2012.

Impact of Sequestration, FY 2013

Improving Teacher Quality State Grants (ESEA Title II-A)



State	Applying CBO's Estimate			Applying the Center on Budget & Policy Priorities' Estimate		
	Funding Cuts (in millions)	Students Impacted	Job Losses	Funding Cuts (in millions)	Students Impacted	Job Losses
Alabama	\$3.0	-	47	\$3.5	-	55
Alaska	0.9	-	7	1.0	-	9
Arizona	3.0	-	50	3.5	-	59
Arkansas	1.8	-	29	2.1	-	34
California	21.1	-	237	24.6	-	277
Colorado	2.1	-	32	2.5	-	37
Connecticut	1.8	-	20	2.1	-	23
Delaware	0.9	-	9	1.0	-	11
District of Columbia	0.9	-	10	1.0	-	11
Florida	8.6	-	121	10.0	-	142
Georgia	5.0	-	80	5.8	-	93
Hawaii	0.9	-	11	1.0	-	13
Idaho	0.9	-	15	1.0	-	17
Illinois	7.7	-	93	9.0	-	109
Indiana	3.2	-	49	3.8	-	57
Iowa	1.5	-	23	1.7	-	26
Kansas	1.5	-	30	1.8	-	35
Kentucky	2.9	-	56	3.4	-	66
Louisiana	4.2	-	60	4.9	-	70
Maine	0.9	-	14	1.0	-	16
Maryland	2.7	-	29	3.2	-	34
Massachusetts	3.4	-	38	4.0	-	44
Michigan	7.5	-	90	8.7	-	104
Minnesota	2.6	-	33	3.0	-	39
Mississippi	2.8	-	53	3.2	-	62
Missouri	3.2	-	52	3.8	-	61
Montana	0.9	-	14	1.0	-	16
Nebraska	0.9	-	15	1.1	-	17
Nevada	1.0	-	12	1.1	-	14
New Hampshire	0.9	-	13	1.0	-	16
New Jersey	4.3	-	39	5.0	-	46
New Mexico	1.5	-	24	1.7	-	27
New York	15.3	-	150	17.8	-	176
North Carolina	4.2	-	75	4.9	-	87
North Dakota	0.9	-	14	1.0	-	17
Ohio	7.1	-	94	8.3	-	110
Oklahoma	2.2	-	38	2.5	-	45
Oregon	1.8	-	23	2.1	-	27
Pennsylvania	7.7	-	94	8.9	-	110
Rhode Island	0.9	-	9	1.0	-	10
South Carolina	2.4	-	37	2.8	-	43
South Dakota	0.9	-	18	1.0	-	21
Tennessee	3.3	-	55	3.8	-	65
Texas	15.6	-	272	18.2	-	317
Utah	1.3	-	20	1.5	-	23
Vermont	0.9	-	13	1.0	-	15
Virginia	3.4	-	50	3.9	-	58
Washington	3.1	-	35	3.6	-	41
West Virginia	1.6	-	23	1.9	-	27
Wisconsin	3.1	-	38	3.6	-	44
Wyoming	0.9	-	14	1.0	-	16
Puerto Rico	5.8	-	117	6.8	-	137
Outlying Areas/Indian Set Aside	1.9	-	33	2.2	-	38
Undistributed	3.8	-	-	4.5	-	-
National	\$192.4	-	2,627	\$224.5	-	3,064

Source: NEA calculations from U.S. Department of Education budget data based on analysis from the Congressional Budget Office (CBO) and the Center on Budget and Policy Priorities. For more information, contact Tom Zembar at 202.822.7109 or TZembar@nea.org. As of January 31, 2012.

Impact of Sequestration, FY 2013

21st Century Community Learning Centers (ESEA Title IV-B)



State	Applying CBO's Estimate			Applying the Center on Budget & Policy Priorities' Estimate		
	Funding Cuts (in millions)	Students Impacted	Job Losses	Funding Cuts (in millions)	Students Impacted	Job Losses
Alabama	\$1.36	1,349	21	\$1.58	1,574	25
Alaska	0.44	522	4	0.51	609	4
Arizona	1.89	3,810	32	2.20	4,445	37
Arkansas	0.93	1,130	15	1.08	1,318	17
California	9.68	27,236	109	11.29	31,775	127
Colorado	0.91	1,758	14	1.07	2,051	16
Connecticut	0.63	1,389	7	0.73	1,621	8
Delaware	0.44	355	5	0.51	414	5
District of Columbia	0.44	462	5	0.51	539	6
Florida	4.53	6,090	64	5.28	7,105	75
Georgia	3.15	2,696	50	3.67	3,145	58
Hawaii	0.44	860	6	0.51	1,004	6
Idaho	0.44	577	7	0.51	673	8
Illinois	3.92	3,785	47	4.58	4,416	55
Indiana	1.52	2,066	23	1.77	2,410	27
Iowa	0.46	426	7	0.54	497	8
Kansas	0.67	1,135	13	0.79	1,324	16
Kentucky	1.35	2,387	26	1.58	2,784	30
Louisiana	1.67	1,242	24	1.95	1,449	28
Maine	0.44	949	7	0.51	1,108	8
Maryland	1.11	1,047	12	1.30	1,221	14
Massachusetts	1.29	2,129	14	1.50	2,484	17
Michigan	3.22	2,429	39	3.76	2,833	45
Minnesota	0.97	1,913	12	1.13	2,232	15
Mississippi	1.13	1,669	21	1.31	1,947	25
Missouri	1.48	1,694	24	1.73	1,976	28
Montana	0.44	949	7	0.51	1,107	8
Nebraska	0.44	569	7	0.51	664	8
Nevada	0.60	1,078	7	0.70	1,258	9
New Hampshire	0.44	641	7	0.51	748	8
New Jersey	1.78	1,261	16	2.08	1,471	19
New Mexico	0.68	1,067	11	0.79	1,245	13
New York	6.82	12,116	67	7.95	14,135	78
North Carolina	2.37	2,122	42	2.76	2,475	49
North Dakota	0.44	795	7	0.51	927	8
Ohio	3.48	2,702	46	4.05	3,152	54
Oklahoma	0.93	1,270	16	1.08	1,482	19
Oregon	0.89	971	11	1.04	1,132	13
Pennsylvania	3.21	2,818	39	3.74	3,287	46
Rhode Island	0.44	653	4	0.51	762	5
South Carolina	1.34	1,560	21	1.56	1,820	24
South Dakota	0.44	1,366	9	0.51	1,594	10
Tennessee	1.65	2,978	28	1.93	3,475	33
Texas	8.14	12,098	142	9.50	14,114	166
Utah	0.49	1,393	8	0.57	1,625	9
Vermont	0.44	1,081	6	0.51	1,262	7
Virginia	1.47	2,072	22	1.71	2,417	25
Washington	1.29	2,175	14	1.50	2,538	17
West Virginia	0.57	1,445	8	0.66	1,686	10
Wisconsin	1.29	3,248	16	1.51	3,789	18
Wyoming	0.44	1,105	7	0.51	1,289	8
Puerto Rico	3.02	5,052	61	3.53	5,894	71
Outlying Areas/Indian Set Aside	0.90	810	15	1.05	945	18
Undistributed	0.90	-	-	1.05	-	-
National	\$89.83	136,500	1,253	\$104.80	159,250	1,462

Source: NEA calculations from U.S. Department of Education budget data based on analysis from the Congressional Budget Office (CBO) and the Center on Budget and Policy Priorities. For more information, contact Tom Zembar at 202.822.7109 or TZembar@nea.org. As of January 31, 2012.

Impact of Sequestration, FY 2013

English Language Acquisition State Grants (ESEA III, Part A)



State	Applying CBO's Estimate			Applying the Center on Budget & Policy Priorities' Estimate		
	Funding Cuts (in millions)	Students Impacted	Job Losses	Funding Cuts (in millions)	Students Impacted	Job Losses
Alabama	\$0.31	1,609	5	\$0.36	1,878	6
Alaska	0.08	1,213	1	0.10	1,415	1
Arizona	1.44	11,383	24	1.68	13,280	28
Arkansas	0.24	2,135	4	0.29	2,490	5
California	12.70	114,754	143	14.81	133,880	167
Colorado	0.78	7,621	12	0.91	8,892	14
Connecticut	0.45	2,324	5	0.53	2,711	6
Delaware	0.10	513	1	0.11	599	1
District of Columbia	0.06	414	1	0.07	483	1
Florida	3.38	18,729	48	3.94	21,850	56
Georgia	1.20	5,399	19	1.39	6,299	22
Hawaii	0.27	1,525	3	0.32	1,779	4
Idaho	0.15	1,312	3	0.18	1,531	3
Illinois	2.23	14,073	27	2.60	16,418	32
Indiana	0.65	3,518	10	0.76	4,104	12
Iowa	0.25	1,473	4	0.29	1,718	5
Kansas	0.32	2,120	6	0.38	2,473	7
Kentucky	0.29	1,059	6	0.34	1,236	6
Louisiana	0.24	921	3	0.28	1,074	4
Maine	0.06	305	1	0.07	356	1
Maryland	0.79	3,263	9	0.92	3,807	10
Massachusetts	1.02	3,503	11	1.19	4,087	13
Michigan	0.83	3,767	10	0.97	4,395	12
Minnesota	0.67	5,067	9	0.79	5,912	10
Mississippi	0.13	443	2	0.15	517	3
Missouri	0.40	1,316	6	0.46	1,536	7
Montana	0.01	45	0	0.01	45	0
Nebraska	0.21	1,553	3	0.24	1,812	4
Nevada	0.69	6,125	9	0.81	7,146	10
New Hampshire	0.07	277	1	0.09	323	1
New Jersey	1.71	4,126	16	1.99	4,814	18
New Mexico	0.32	4,623	5	0.37	5,394	6
New York	4.36	17,483	43	5.09	20,397	50
North Carolina	1.21	8,221	21	1.41	9,591	25
North Dakota	0.01	48	0	0.01	48	0
Ohio	0.75	2,991	10	0.88	3,489	12
Oklahoma	0.35	2,561	6	0.41	2,987	7
Oregon	0.60	4,432	8	0.70	5,171	9
Pennsylvania	1.12	2,195	14	1.30	2,561	16
Rhode Island	0.19	722	2	0.22	842	2
South Carolina	0.35	2,364	5	0.41	2,758	6
South Dakota	0.06	257	1	0.07	299	1
Tennessee	0.45	2,412	8	0.52	2,814	9
Texas	7.97	55,972	139	9.30	65,301	162
Utah	0.38	3,706	6	0.44	4,323	7
Vermont	0.004	10	0	0.004	10	0
Virginia	0.91	7,613	14	1.07	8,882	16
Washington	1.37	6,892	15	1.59	8,041	18
West Virginia	0.05	135	1	0.06	157	1
Wisconsin	0.52	3,217	6	0.61	3,753	7
Wyoming	0.00	0	0	0.00	0	0
Puerto Rico	0.27	1,759	5	0.31	2,053	6
Outlying Areas/Indian Set Aside	0.29	1,878	5	0.33	2,191	6
Undistributed	3.71	-	-	4.33	-	-
National	\$56.97	351,376	715	\$66.46	409,921	834

Source: NEA calculations from U.S. Department of Education budget data based on analysis from the Congressional Budget Office (CBO) and the Center on Budget and Policy Priorities. For more information, contact Tom Zembar at 202.822.7109 or TZembar@nea.org. As of January 31, 2012.

Impact of Sequestration, FY 2013

Special Education Grants to States (IDEA Part B-611)



State	Applying CBO's Estimate			Applying the Center on Budget & Policy Priorities' Estimate		
	Funding Cuts (in millions)	Students Impacted	Job Losses	Funding Cuts (in millions)	Students Impacted	Job Losses
Alabama	\$14.3	5,898	222	\$16.7	6,880	260
Alaska	2.9	1,257	24	3.4	1,467	28
Arizona	14.8	8,757	249	17.3	10,217	291
Arkansas	8.8	4,088	142	10.3	4,770	166
California	96.6	47,292	1,087	112.7	55,174	1,268
Colorado	12.2	5,749	181	14.2	6,707	211
Connecticut	10.5	4,749	118	12.2	5,541	137
Delaware	2.7	1,300	28	3.2	1,516	33
District of Columbia	1.4	867	15	1.6	1,011	17
Florida	49.8	26,240	705	58.1	30,613	822
Georgia	25.9	12,745	411	30.2	14,869	480
Hawaii	3.1	1,366	39	3.7	1,593	46
Idaho	4.4	1,850	72	5.1	2,158	84
Illinois	39.9	21,021	483	46.5	24,524	563
Indiana	20.3	11,618	308	23.7	13,555	359
Iowa	9.6	4,820	148	11.2	5,623	173
Kansas	8.4	4,437	167	9.8	5,176	194
Kentucky	12.4	6,656	237	14.5	7,765	277
Louisiana	14.9	5,718	213	17.4	6,671	248
Maine	4.3	2,242	67	5.0	2,616	78
Maryland	15.8	7,145	171	18.4	8,336	199
Massachusetts	22.4	11,896	246	26.1	13,878	287
Michigan	31.5	15,437	378	36.8	18,010	441
Minnesota	14.9	8,498	192	17.4	9,914	225
Mississippi	9.5	4,246	180	11.0	4,953	210
Missouri	17.9	8,774	286	20.9	10,236	334
Montana	2.9	1,191	46	3.4	1,390	54
Nebraska	5.9	3,095	95	6.9	3,611	110
Nevada	5.6	3,243	70	6.5	3,784	81
New Hampshire	3.7	2,112	56	4.4	2,464	65
New Jersey	28.5	16,947	262	33.2	19,772	305
New Mexico	7.2	3,264	113	8.4	3,808	132
New York	59.8	30,722	589	69.7	35,842	688
North Carolina	25.7	13,142	457	30.0	15,333	533
North Dakota	2.2	903	35	2.6	1,054	41
Ohio	34.5	18,688	458	40.2	21,802	534
Oklahoma	11.6	7,014	206	13.6	8,183	240
Oregon	10.2	5,650	129	11.8	6,592	151
Pennsylvania	33.6	20,817	412	39.2	24,287	481
Rhode Island	3.4	1,765	34	4.0	2,059	40
South Carolina	13.9	7,034	215	16.3	8,206	251
South Dakota	2.6	1,205	52	3.1	1,406	60
Tennessee	18.6	8,450	317	21.8	9,859	370
Texas	77.3	31,582	1,347	90.2	36,845	1,571
Utah	8.6	4,833	136	10.1	5,638	159
Vermont	2.1	960	30	2.5	1,120	35
Virginia	22.2	11,454	328	25.9	13,362	383
Washington	17.4	8,966	196	20.3	10,460	228
West Virginia	6.0	3,107	87	7.0	3,624	102
Wisconsin	16.4	8,567	199	19.1	9,994	232
Wyoming	2.2	932	34	2.6	1,088	40
Puerto Rico	9.1	8,879	183	10.6	10,359	214
Outlying Areas/Indian Set Aside	2.7	241	46	3.1	282	53
Undistributed	0.0	-	-	0.0	-	-
National	\$903.1	459,425	12,501	\$1,053.6	535,997	14,585

Source: NEA calculations from U.S. Department of Education budget data based on analysis from the Congressional Budget Office (CBO) and the Center on Budget and Policy Priorities. For more information, contact Tom Zembar at 202.822.7109 or TZembar@nea.org. As of January 31, 2012.

Impact of Sequestration, FY 2013

Special Education Preschool Grants (IDEA Part B-619)



State	Applying CBO's Estimate			Applying the Center on Budget & Policy Priorities' Estimate		
	Funding Cuts (in millions)	Students Impacted	Job Losses	Funding Cuts (in millions)	Students Impacted	Job Losses
Alabama	\$0.43	584	7	\$0.50	682	8
Alaska	0.10	164	1	0.11	191	1
Arizona	0.41	1,151	7	0.48	1,343	8
Arkansas	0.41	1,017	7	0.48	1,186	8
California	2.94	5,648	33	3.43	6,589	39
Colorado	0.38	920	6	0.44	1,074	7
Connecticut	0.38	619	4	0.44	722	5
Delaware	0.10	166	1	0.11	193	1
District of Columbia	0.02	75	0	0.02	87	0
Florida	1.41	2,810	20	1.65	3,278	23
Georgia	0.75	1,241	12	0.87	1,448	14
Hawaii	0.08	187	1	0.09	218	1
Idaho	0.17	279	3	0.20	326	3
Illinois	1.35	2,847	16	1.58	3,322	19
Indiana	0.68	1,461	10	0.79	1,704	12
Iowa	0.31	575	5	0.36	671	5
Kansas	0.33	827	7	0.39	965	8
Kentucky	0.78	1,401	15	0.91	1,635	17
Louisiana	0.50	813	7	0.58	949	8
Maine	0.19	298	3	0.22	348	3
Maryland	0.51	1,004	6	0.60	1,172	6
Massachusetts	0.76	1,300	8	0.88	1,516	10
Michigan	0.96	1,808	12	1.12	2,110	13
Minnesota	0.57	1,176	7	0.66	1,372	9
Mississippi	0.32	795	6	0.38	927	7
Missouri	0.46	1,239	7	0.53	1,446	9
Montana	0.09	129	1	0.11	151	2
Nebraska	0.17	394	3	0.20	460	3
Nevada	0.17	542	2	0.20	632	3
New Hampshire	0.12	245	2	0.14	285	2
New Jersey	0.87	1,332	8	1.02	1,554	9
New Mexico	0.24	407	4	0.28	475	4
New York	2.58	5,064	25	3.01	5,908	30
North Carolina	0.87	1,438	15	1.01	1,677	18
North Dakota	0.06	134	1	0.07	156	1
Ohio	0.96	1,751	13	1.12	2,043	15
Oklahoma	0.28	647	5	0.32	755	6
Oregon	0.29	733	4	0.34	855	4
Pennsylvania	1.07	2,424	13	1.25	2,828	15
Rhode Island	0.13	230	1	0.15	268	1
South Carolina	0.55	864	8	0.64	1,009	10
South Dakota	0.11	214	2	0.13	249	3
Tennessee	0.53	1,021	9	0.61	1,192	10
Texas	1.74	3,237	30	2.03	3,776	35
Utah	0.27	701	4	0.32	818	5
Vermont	0.07	137	1	0.08	160	1
Virginia	0.70	1,332	10	0.81	1,554	12
Washington	0.62	1,113	7	0.73	1,299	8
West Virginia	0.27	437	4	0.31	510	5
Wisconsin	0.72	1,254	9	0.85	1,463	10
Wyoming	0.08	256	1	0.09	298	1
Puerto Rico	0.24	1,088	5	0.28	1,270	6
Outlying Areas/Indian Set Aside	0.00	-	-	0.00	-	-
Undistributed	0.00	-	-	0.00	-	-
National	\$29.07	57,531	398	\$33.91	67,119	465

Source: NEA calculations from U.S. Department of Education budget data based on analysis from the Congressional Budget Office (CBO) and the Center on Budget and Policy Priorities. For more information, contact Tom Zembar at 202.822.7109 or TZembar@nea.org. As of January 31, 2012.

Impact of Sequestration, FY 2013

Special Education Grants for Infants and Families (IDEA Part C)



State	Applying CBO's Estimate			Applying the Center on Budget & Policy Priorities' Estimate		
	Funding Cuts (in millions)	Students Impacted	Job Losses	Funding Cuts (in millions)	Students Impacted	Job Losses
Alabama	\$0.48	242	7	\$0.56	282	9
Alaska	0.17	55	1	0.20	64	2
Arizona	0.79	413	13	0.92	482	15
Arkansas	0.31	251	5	0.36	293	6
California	4.22	2,399	47	4.92	2,799	55
Colorado	0.55	421	8	0.65	491	10
Connecticut	0.32	351	4	0.37	409	4
Delaware	0.17	69	2	0.20	81	2
District of Columbia	0.17	31	2	0.20	36	2
Florida	1.77	1,026	25	2.07	1,197	29
Georgia	1.14	469	18	1.33	547	21
Hawaii	0.17	150	2	0.20	175	2
Idaho	0.19	135	3	0.22	158	4
Illinois	1.36	1,421	17	1.59	1,657	19
Indiana	0.68	786	10	0.79	917	12
Iowa	0.31	281	5	0.36	328	6
Kansas	0.32	307	6	0.37	359	7
Kentucky	0.44	362	8	0.51	422	10
Louisiana	0.50	367	7	0.59	428	8
Maine	0.17	73	3	0.20	85	3
Maryland	0.58	600	6	0.68	700	7
Massachusetts	0.59	1,183	6	0.68	1,380	8
Michigan	0.93	810	11	1.09	945	13
Minnesota	0.56	391	7	0.65	456	8
Mississippi	0.34	184	7	0.40	215	8
Missouri	0.62	354	10	0.72	413	12
Montana	0.17	56	3	0.20	66	3
Nebraska	0.21	120	3	0.24	140	4
Nevada	0.31	183	4	0.36	213	5
New Hampshire	0.17	142	3	0.20	165	3
New Jersey	0.84	825	8	0.98	963	9
New Mexico	0.23	370	4	0.27	432	4
New York	1.88	2,417	19	2.19	2,819	22
North Carolina	1.01	768	18	1.18	896	21
North Dakota	0.17	72	3	0.20	84	3
Ohio	1.13	1,160	15	1.31	1,353	17
Oklahoma	0.42	216	7	0.49	252	9
Oregon	0.38	229	5	0.44	268	6
Pennsylvania	1.13	1,353	14	1.32	1,579	16
Rhode Island	0.17	144	2	0.20	168	2
South Carolina	0.48	361	7	0.55	421	9
South Dakota	0.17	86	3	0.20	101	4
Tennessee	0.65	316	11	0.76	369	13
Texas	3.14	2,254	55	3.67	2,629	64
Utah	0.42	264	7	0.49	308	8
Vermont	0.17	62	2	0.20	72	3
Virginia	0.81	575	12	0.95	671	14
Washington	0.69	436	8	0.80	509	9
West Virginia	0.17	191	2	0.20	223	3
Wisconsin	0.56	478	7	0.65	558	8
Wyoming	0.17	90	3	0.20	105	3
Puerto Rico	0.37	406	7	0.43	474	9
Outlying Areas/Indian Set Aside	0.67	34	11	0.78	40	13
Undistributed	0.00	-	-	0.00	-	-
National	\$34.53	26,740	484	\$40.29	31,197	564

Source: NEA calculations from U.S. Department of Education budget data based on analysis from the Congressional Budget Office (CBO) and the Center on Budget and Policy Priorities. For more information, contact Tom Zembar at 202.822.7109 or TZembar@nea.org. As of January 31, 2012.

Impact of Sequestration, FY 2013

Career and Technical Education State Grants (Perkins CTEA Title I)



State	Applying CBO's Estimate			Applying the Center on Budget & Policy Priorities' Estimate		
	Funding Cuts (in millions)	Students Impacted	Job Losses	Funding Cuts (in millions)	Students Impacted	Job Losses
Alabama	\$1.5	22,845	23	\$1.7	26,653	27
Alaska	0.3	2,772	3	0.4	3,234	3
Arizona	1.9	21,660	33	2.3	25,270	38
Arkansas	0.9	15,506	14	1.0	18,090	17
California	9.3	264,938	105	10.8	309,095	122
Colorado	1.2	9,445	18	1.4	11,019	21
Connecticut	0.8	13,478	8	0.9	15,725	10
Delaware	0.4	1,581	4	0.4	1,844	4
District of Columbia	0.3	268	4	0.4	312	4
Florida	4.6	49,298	65	5.4	57,514	76
Georgia	3.0	46,046	48	3.5	53,720	56
Hawaii	0.4	5,009	5	0.5	5,843	6
Idaho	0.5	7,989	8	0.6	9,321	10
Illinois	3.3	52,524	40	3.8	61,278	46
Indiana	2.0	14,694	30	2.3	17,144	35
Iowa	0.9	32,944	14	1.1	38,435	17
Kansas	0.8	4,368	16	0.9	5,096	18
Kentucky	1.4	16,158	27	1.6	18,851	31
Louisiana	1.6	13,767	23	1.9	16,062	27
Maine	0.4	1,249	7	0.5	1,457	8
Maryland	1.2	22,048	13	1.4	25,723	15
Massachusetts	1.4	9,450	16	1.7	11,025	18
Michigan	3.1	30,378	37	3.6	35,441	43
Minnesota	1.3	22,001	17	1.5	25,667	20
Mississippi	1.0	4,884	20	1.2	5,698	23
Missouri	1.8	12,684	28	2.0	14,798	33
Montana	0.4	1,492	6	0.5	1,741	7
Nebraska	0.5	12,631	9	0.6	14,736	10
Nevada	0.7	8,864	8	0.8	10,341	10
New Hampshire	0.4	2,008	6	0.5	2,343	8
New Jersey	1.8	14,827	16	2.0	17,298	19
New Mexico	0.6	5,836	10	0.7	6,809	12
New York	4.2	29,405	42	5.0	34,305	49
North Carolina	2.8	40,589	49	3.2	47,354	58
North Dakota	0.3	3,508	5	0.4	4,093	6
Ohio	3.4	26,616	45	3.9	31,052	52
Oklahoma	1.2	11,401	21	1.4	13,301	24
Oregon	1.1	3,644	14	1.2	4,252	16
Pennsylvania	3.3	14,970	41	3.9	17,465	48
Rhode Island	0.4	4,318	4	0.5	5,038	5
South Carolina	1.4	21,597	22	1.7	25,196	26
South Dakota	0.3	3,445	6	0.4	4,020	8
Tennessee	1.8	19,919	31	2.1	23,238	36
Texas	7.0	117,468	122	8.2	137,047	142
Utah	1.0	17,835	16	1.2	20,807	18
Vermont	0.3	1,100	5	0.4	1,284	5
Virginia	1.9	30,845	28	2.2	35,985	33
Washington	1.6	42,144	18	1.9	49,168	21
West Virginia	0.7	6,687	10	0.8	7,801	11
Wisconsin	1.6	13,719	20	1.9	16,005	23
Wyoming	0.3	1,185	5	0.4	1,383	6
Puerto Rico	1.4	19,493	29	1.7	22,742	34
Outlying Areas/Indian Set Aside	1.5	41,008	25	1.7	47,842	29
Undistributed	0.0	-	-	0.0	-	-
National	\$87.6	1,214,538	1,239	\$102.2	1,416,961	1,446

Source: NEA calculations from U.S. Department of Education budget data based on analysis from the Congressional Budget Office (CBO) and the Center on Budget and Policy Priorities. For more information, contact Tom Zembar at 202.822.7109 or TZembar@nea.org. As of January 31, 2012.

Impact of Sequestration, FY 2013

Federal Supplemental Educational Opportunity Grants (HEA IV-A-3)



State	Applying CBO's Estimate			Applying the Center on Budget & Policy Priorities' Estimate		
	Funding Cuts (in millions)	Students Impacted	Job Losses	Funding Cuts (in millions)	Students Impacted	Job Losses
Alabama	\$0.94	17,022	-	\$1.10	17,022	-
Alaska	0.06	2,491	-	0.07	2,491	-
Arizona	1.41	27,413	-	1.65	27,413	-
Arkansas	0.36	8,009	-	0.42	8,009	-
California	6.00	165,874	-	7.00	165,874	-
Colorado	0.80	16,934	-	0.93	16,934	-
Connecticut	0.68	13,521	-	0.79	13,521	-
Delaware	0.12	3,840	-	0.14	3,840	-
District of Columbia	0.56	6,653	-	0.65	6,653	-
Florida	2.75	77,563	-	3.21	77,563	-
Georgia	1.34	32,668	-	1.56	32,668	-
Hawaii	0.11	1,762	-	0.13	1,762	-
Idaho	0.15	4,734	-	0.17	4,734	-
Illinois	3.03	54,190	-	3.53	54,190	-
Indiana	1.23	32,320	-	1.43	32,320	-
Iowa	1.06	28,694	-	1.24	28,694	-
Kansas	0.42	11,704	-	0.49	11,704	-
Kentucky	0.76	21,032	-	0.88	21,032	-
Louisiana	0.55	14,466	-	0.64	14,466	-
Maine	0.52	10,103	-	0.60	10,103	-
Maryland	0.80	19,657	-	0.93	19,657	-
Massachusetts	2.18	37,048	-	2.54	37,048	-
Michigan	2.02	51,498	-	2.36	51,498	-
Minnesota	1.31	25,575	-	1.53	25,575	-
Mississippi	0.61	13,445	-	0.71	13,445	-
Missouri	1.01	23,251	-	1.18	23,251	-
Montana	0.13	2,856	-	0.15	2,856	-
Nebraska	0.28	6,438	-	0.33	6,438	-
Nevada	0.17	3,127	-	0.19	3,127	-
New Hampshire	0.37	7,848	-	0.43	7,848	-
New Jersey	1.21	28,504	-	1.41	28,504	-
New Mexico	0.28	5,535	-	0.33	5,535	-
New York	4.41	95,284	-	5.15	95,284	-
North Carolina	1.30	23,353	-	1.52	23,353	-
North Dakota	0.21	4,933	-	0.24	4,933	-
Ohio	2.36	58,698	-	2.75	58,698	-
Oklahoma	0.53	11,877	-	0.62	11,877	-
Oregon	0.78	15,477	-	0.91	15,477	-
Pennsylvania	3.26	67,552	-	3.80	67,552	-
Rhode Island	0.45	10,614	-	0.53	10,614	-
South Carolina	0.75	12,650	-	0.88	12,650	-
South Dakota	0.22	4,569	-	0.26	4,569	-
Tennessee	0.98	26,313	-	1.15	26,313	-
Texas	3.28	73,615	-	3.83	73,615	-
Utah	0.31	12,977	-	0.36	12,977	-
Vermont	0.40	4,815	-	0.47	4,815	-
Virginia	1.14	32,115	-	1.34	32,115	-
Washington	0.95	22,527	-	1.11	22,527	-
West Virginia	0.37	7,611	-	0.43	7,611	-
Wisconsin	1.23	27,418	-	1.44	27,418	-
Wyoming	0.08	2,229	-	0.09	2,229	-
Puerto Rico	1.03	47,506	-	1.20	47,506	-
Outlying Areas	0.03	1,225	-	0.03	1,225	-
Undistributed	0.00	-	-	0.00	-	-
National	\$57.30	1,339,129	-	\$66.85	1,339,129	-

Source: NEA calculations from U.S. Department of Education budget data based on analysis from the Congressional Budget Office (CBO) and the Center on Budget and Policy Priorities. For more information, contact Tom Zembar at 202.822.7109 or TZembar@nea.org. As of January 31, 2012.

Impact of Sequestration, FY 2013

Federal Work-Study (HEA IV-C)



State	Applying CBO's Estimate			Applying the Center on Budget & Policy Priorities' Estimate		
	Funding Cuts (in millions)	Students Impacted	Job Losses	Funding Cuts (in millions)	Students Impacted	Job Losses
Alabama	\$1.28	8,451	-	\$1.49	8,451	-
Alaska	0.07	336	-	0.08	336	-
Arizona	0.91	5,565	-	1.06	5,565	-
Arkansas	0.58	5,840	-	0.68	5,840	-
California	7.84	61,503	-	9.15	61,503	-
Colorado	0.99	7,456	-	1.15	7,456	-
Connecticut	0.85	10,424	-	1.00	10,424	-
Delaware	0.12	1,371	-	0.14	1,371	-
District of Columbia	0.85	6,638	-	0.99	6,638	-
Florida	3.25	21,306	-	3.80	21,306	-
Georgia	1.83	12,921	-	2.13	12,921	-
Hawaii	0.17	927	-	0.20	927	-
Idaho	0.20	2,031	-	0.23	2,031	-
Illinois	4.09	34,056	-	4.77	34,056	-
Indiana	1.64	16,227	-	1.91	16,227	-
Iowa	1.10	15,315	-	1.29	15,315	-
Kansas	0.63	6,635	-	0.74	6,635	-
Kentucky	1.10	10,547	-	1.29	10,547	-
Louisiana	1.13	8,559	-	1.32	8,559	-
Maine	0.61	6,665	-	0.71	6,665	-
Maryland	1.19	8,719	-	1.39	8,719	-
Massachusetts	3.50	39,578	-	4.08	39,578	-
Michigan	2.41	24,355	-	2.81	24,355	-
Minnesota	1.53	15,145	-	1.78	15,145	-
Mississippi	0.90	7,424	-	1.06	7,424	-
Missouri	1.58	14,934	-	1.84	14,934	-
Montana	0.25	2,071	-	0.29	2,071	-
Nebraska	0.43	4,513	-	0.50	4,513	-
Nevada	0.18	1,216	-	0.22	1,216	-
New Hampshire	0.50	7,114	-	0.58	7,114	-
New Jersey	1.50	14,500	-	1.75	14,500	-
New Mexico	0.53	3,017	-	0.62	3,017	-
New York	7.14	73,127	-	8.33	73,127	-
North Carolina	1.80	18,277	-	2.10	18,277	-
North Dakota	0.25	2,451	-	0.30	2,451	-
Ohio	3.00	29,787	-	3.50	29,787	-
Oklahoma	0.78	6,343	-	0.91	6,343	-
Oregon	1.04	11,088	-	1.22	11,088	-
Pennsylvania	4.14	50,731	-	4.83	50,731	-
Rhode Island	0.57	8,357	-	0.66	8,357	-
South Carolina	0.98	8,371	-	1.14	8,371	-
South Dakota	0.32	2,904	-	0.37	2,904	-
Tennessee	1.37	13,275	-	1.60	13,275	-
Texas	3.98	31,004	-	4.64	31,004	-
Utah	0.39	2,658	-	0.46	2,658	-
Vermont	0.45	6,812	-	0.52	6,812	-
Virginia	1.53	14,181	-	1.78	14,181	-
Washington	1.21	9,281	-	1.41	9,281	-
West Virginia	0.50	4,952	-	0.58	4,952	-
Wisconsin	1.41	17,132	-	1.64	17,132	-
Wyoming	0.10	845	-	0.11	845	-
Puerto Rico	1.42	15,373	-	1.65	15,373	-
Outlying Areas	0.07	750	-	0.08	750	-
Undistributed	0.00	-	-	0.00	-	-
National	\$76.18	713,060	-	\$88.88	713,060	-

Source: NEA calculations from U.S. Department of Education budget data based on analysis from the Congressional Budget Office (CBO) and the Center on Budget and Policy Priorities. For more information, contact Tom Zembar at 202.822.7109 or TZembar@nea.org. As of January 31, 2012.

Impact of Sequestration, FY 2013

Head Start (HSA section 639)



State	Applying CBO's Estimate			Applying the Center on Budget & Policy Priorities' Estimate		
	Funding Cuts (in millions)	Students Impacted	Job Losses	Funding Cuts (in millions)	Students Impacted	Job Losses
Alabama	\$10.1	1,360	474	\$11.8	1,587	553
Alaska	1.2	132	112	1.4	154	131
Arizona	9.8	1,105	528	11.5	1,290	616
Arkansas	6.1	877	407	7.1	1,023	475
California	77.2	8,226	3,074	90.1	9,597	3,586
Colorado	6.5	831	495	7.6	970	578
Connecticut	4.7	559	248	5.5	653	289
Delaware	1.2	172	74	1.4	200	87
District of Columbia	2.2	277	162	2.6	323	189
Florida	25.3	3,003	1,270	29.5	3,504	1,481
Georgia	16.0	1,966	714	18.7	2,294	833
Hawaii	2.1	249	76	2.4	291	89
Idaho	2.2	245	195	2.6	286	228
Illinois	25.4	3,300	1,168	29.6	3,850	1,363
Indiana	9.3	1,214	430	10.8	1,417	502
Iowa	4.8	636	318	5.6	742	371
Kansas	4.8	685	362	5.6	799	422
Kentucky	10.1	1,329	550	11.8	1,550	641
Louisiana	13.6	1,768	634	15.8	2,062	739
Maine	2.5	311	173	3.0	363	202
Maryland	7.2	853	294	8.4	995	343
Massachusetts	9.9	1,051	540	11.5	1,227	630
Michigan	21.6	2,829	973	25.2	3,301	1,136
Minnesota	6.8	847	449	7.9	989	524
Mississippi	14.6	2,145	762	17.0	2,503	889
Missouri	11.2	1,453	601	13.1	1,695	701
Montana	1.9	242	191	2.3	282	223
Nebraska	3.4	426	230	4.0	497	268
Nevada	2.4	242	94	2.8	283	110
New Hampshire	1.3	138	77	1.5	161	90
New Jersey	12.1	1,250	489	14.1	1,459	571
New Mexico	5.0	617	300	5.9	720	350
New York	39.8	4,015	1,877	46.5	4,684	2,190
North Carolina	13.8	1,636	779	16.2	1,908	909
North Dakota	1.6	196	128	1.9	229	149
Ohio	23.1	3,111	1,051	27.0	3,630	1,226
Oklahoma	7.9	1,138	605	9.2	1,327	705
Oregon	5.7	919	597	6.6	1,072	697
Pennsylvania	21.1	2,914	1,125	24.7	3,399	1,313
Rhode Island	2.0	237	64	2.4	276	75
South Carolina	8.0	1,036	327	9.3	1,208	381
South Dakota	1.7	234	191	2.0	272	223
Tennessee	11.1	1,352	504	12.9	1,577	588
Texas	45.2	5,689	2,566	52.7	6,638	2,994
Utah	3.6	460	226	4.2	536	264
Vermont	1.2	124	68	1.4	144	80
Virginia	9.3	1,133	527	10.9	1,322	615
Washington	9.5	961	753	11.0	1,121	878
West Virginia	4.7	632	304	5.5	737	355
Wisconsin	8.5	1,122	579	9.9	1,309	676
Wyoming	1.1	143	85	1.3	166	99
Puerto Rico	22.4	2,981	1,254	26.2	3,478	1,463
Outlying Areas/Indian Set Aside	47.4	5,105	2,648	55.3	5,956	3,090
Undistributed	0.0	-	-	0.0	-	-
National	\$621.5	75,477	32,723	\$725.1	88,056	38,177

Source: NEA calculations from U.S. Department of Education budget data based on analysis from the Congressional Budget Office (CBO) and the Center on Budget and Policy Priorities. For more information, contact Tom Zembar at 202.822.7109 or TZembar@nea.org. As of January 31, 2012.