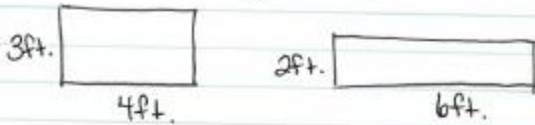


Given the following rectangles:



Calculate the area and perimeter of both rectangles. Select the statement that must be true about the rectangles.

- (A) The rectangles have the same perimeters and different areas.
- (B) The rectangles have the same perimeters and same areas.
- (C) The rectangles have different perimeters and different areas.
- (D) The rectangles have different perimeters and the same areas.