

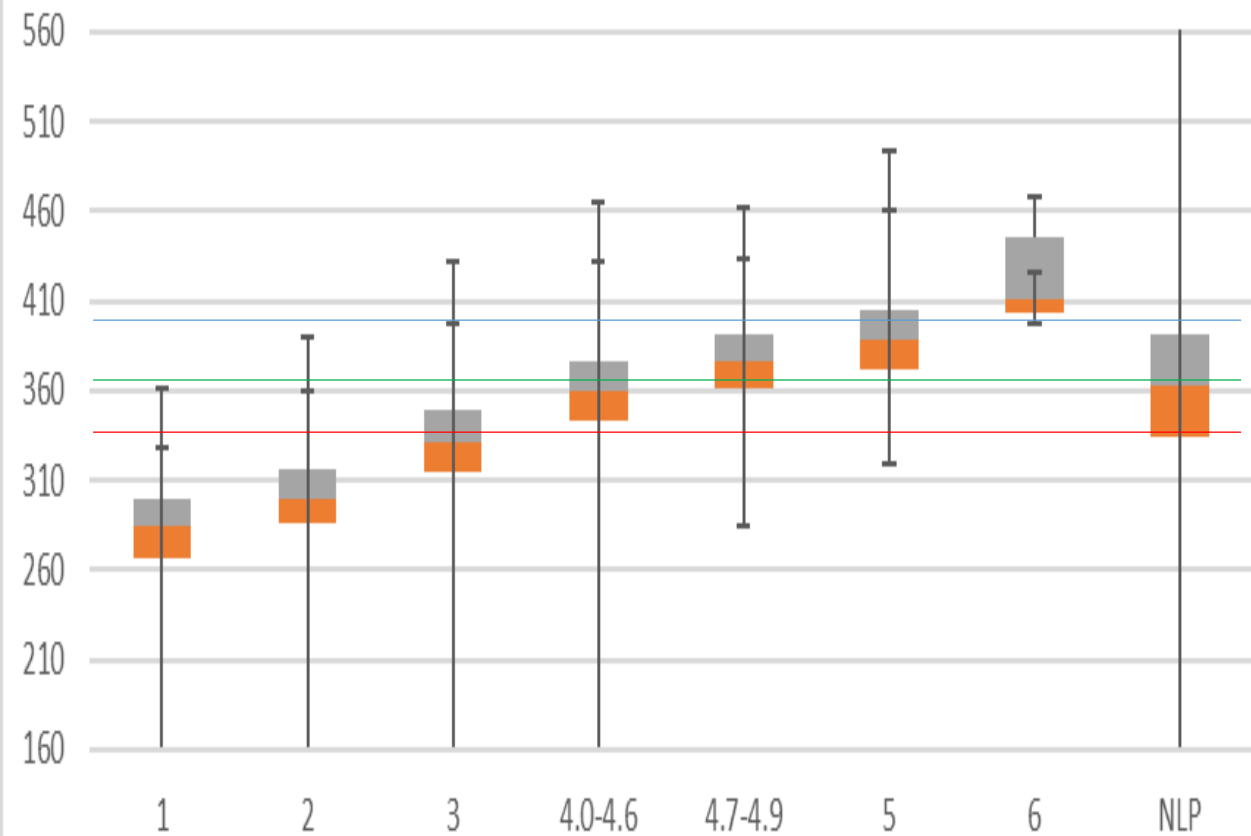
2018 MAP-ACCESS Boxplots

ELs and NLP

Matched ACCESS/MAP Grade Level Assessment Data (3-8)

- The boxplots show how students who scored at proficiency level ranges on ACCESS in 2018 performed on ELA and Math Grade Level Assessments.
- The horizontal axis is the ACCESS score ranges. NLP is the code for all other students including language minority students that are proficient in English.
- The vertical axis are scale scores for the grade level assessments.
- Three colored horizontal lines appear on the graph. They represent the minimum score to achieve basic (red), proficient (green) and advanced (blue).
- The graphs show the quartiles for ELs on ELA and Math grade level assessments, the range and the mean.

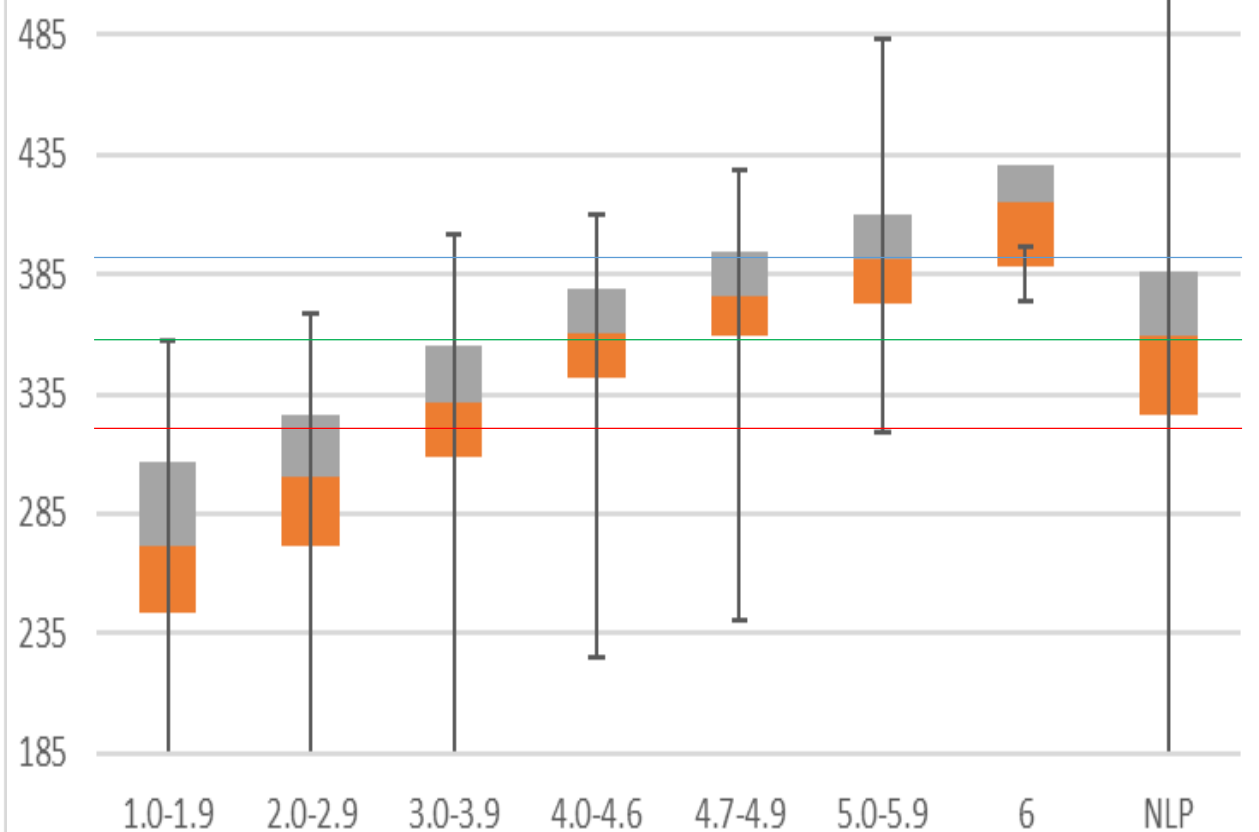
3rd ELA



	1	2	3	4.0-4.6	4.7-4.9	5	6	NLP
Min	160	160	160	160	284	319	398	160
Q1	267	286	314	344	362	372	403.5	334
Median	285	300	332	360	377	389	411	363
Q3	299	316	349	377	390	405	445	391
Max	361	390	432	465	462	493	468	675
Mean	306	243	341	301	361	395	433	
Range	201	230	272	305	178	174	70	

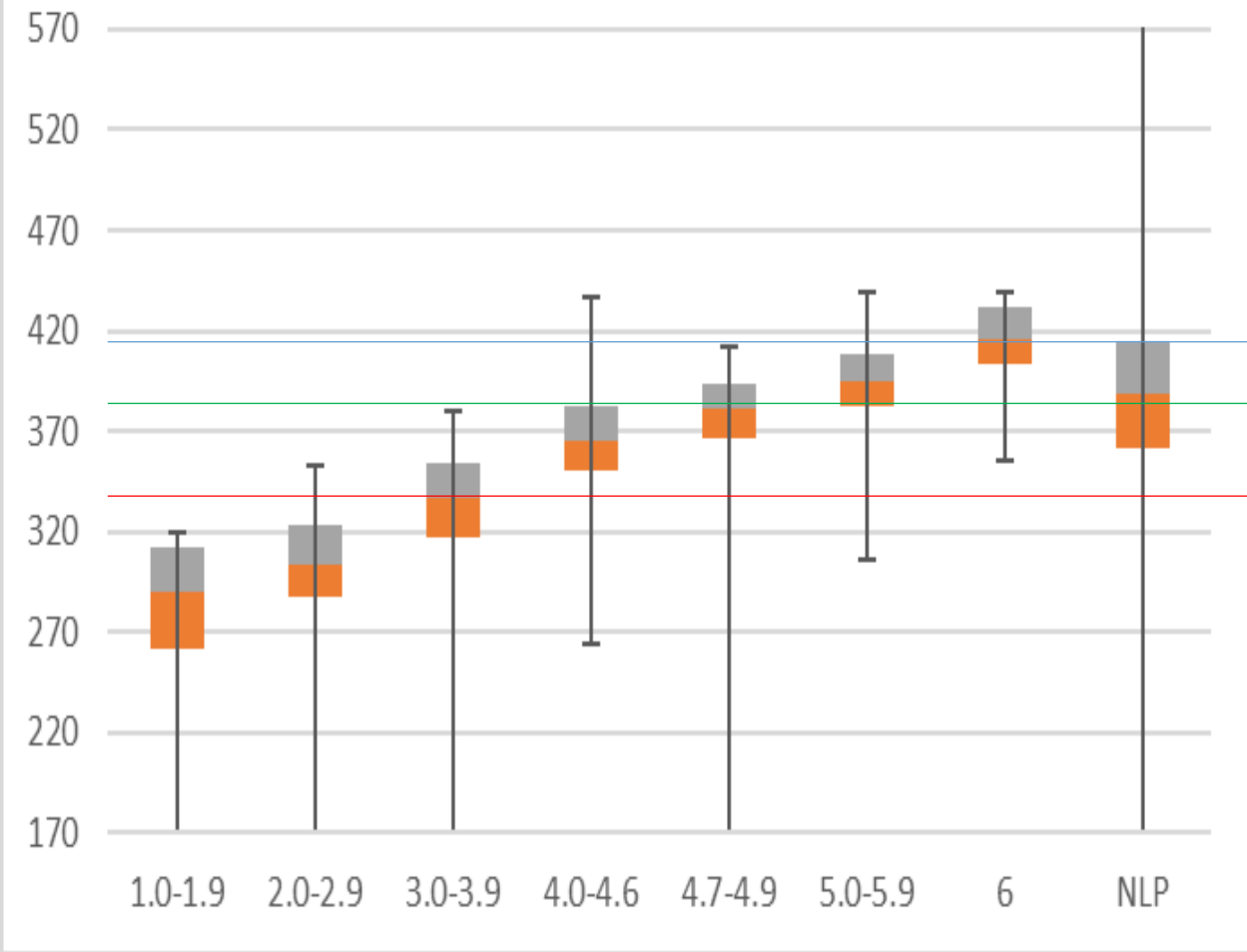
- 2nd Quartile
- 3rd Quartile
- Minimum score for Advanced
- Minimum score for Proficient
- Minimum score for Basic

3rd Math

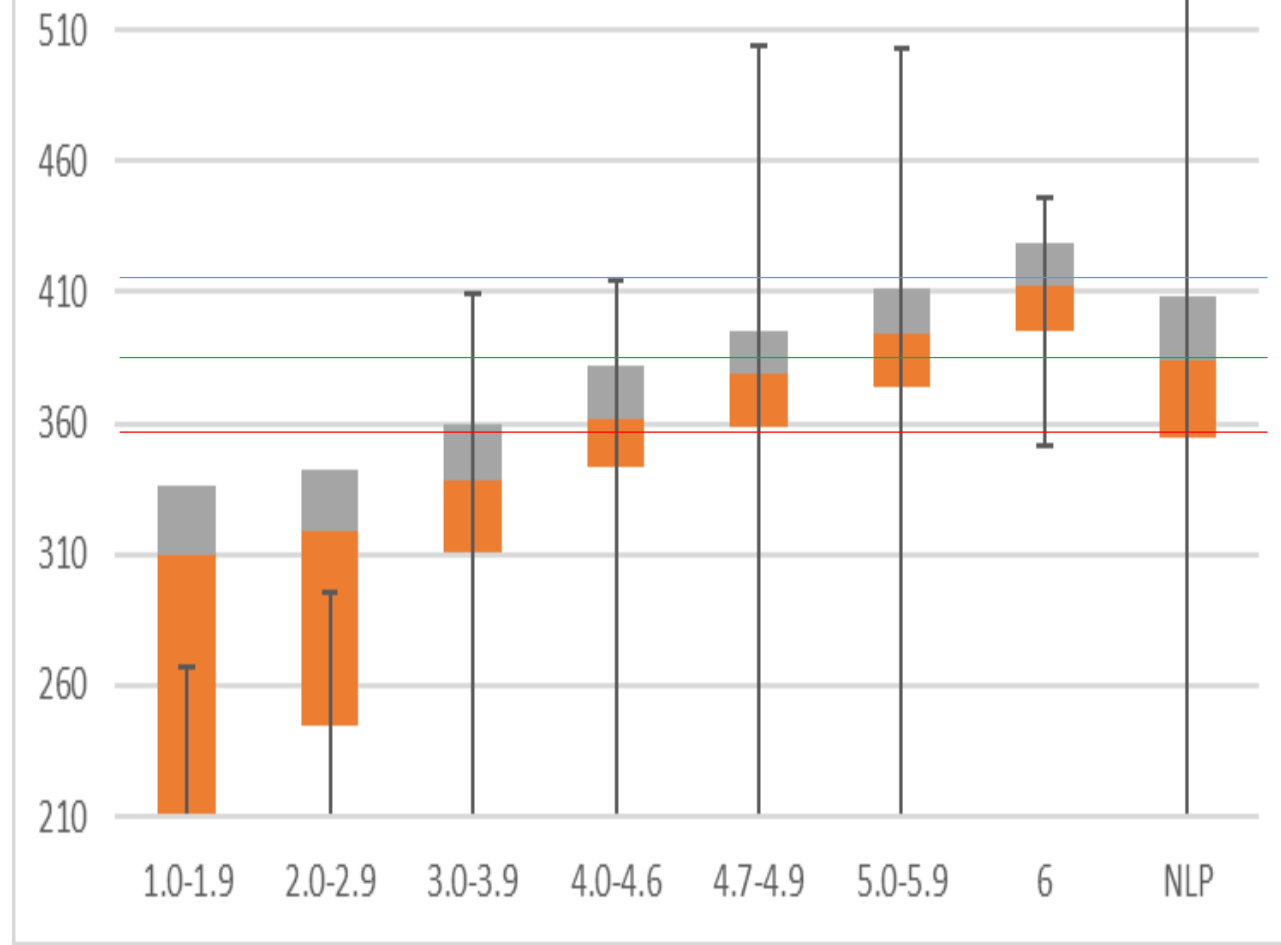


	1.0-1.9	2.0-2.9	3.0-3.9	4.0-4.6	4.7-4.9	5.0-5.9	6	NLP
Minimum	185	185	185	225	241	319	374	185
Q1	244	271	309	342	359	373	388.5	326
Median	272	300	331	360	376	391	415	359
Q3	307	326	355	379	394	410	430.25	386
Max	420	424	448	447	463	520	438	704
Mean	271	293	337	367	361	397	402	
Range	235	239	263	222	222	201	64	

4th ELA



4th Math

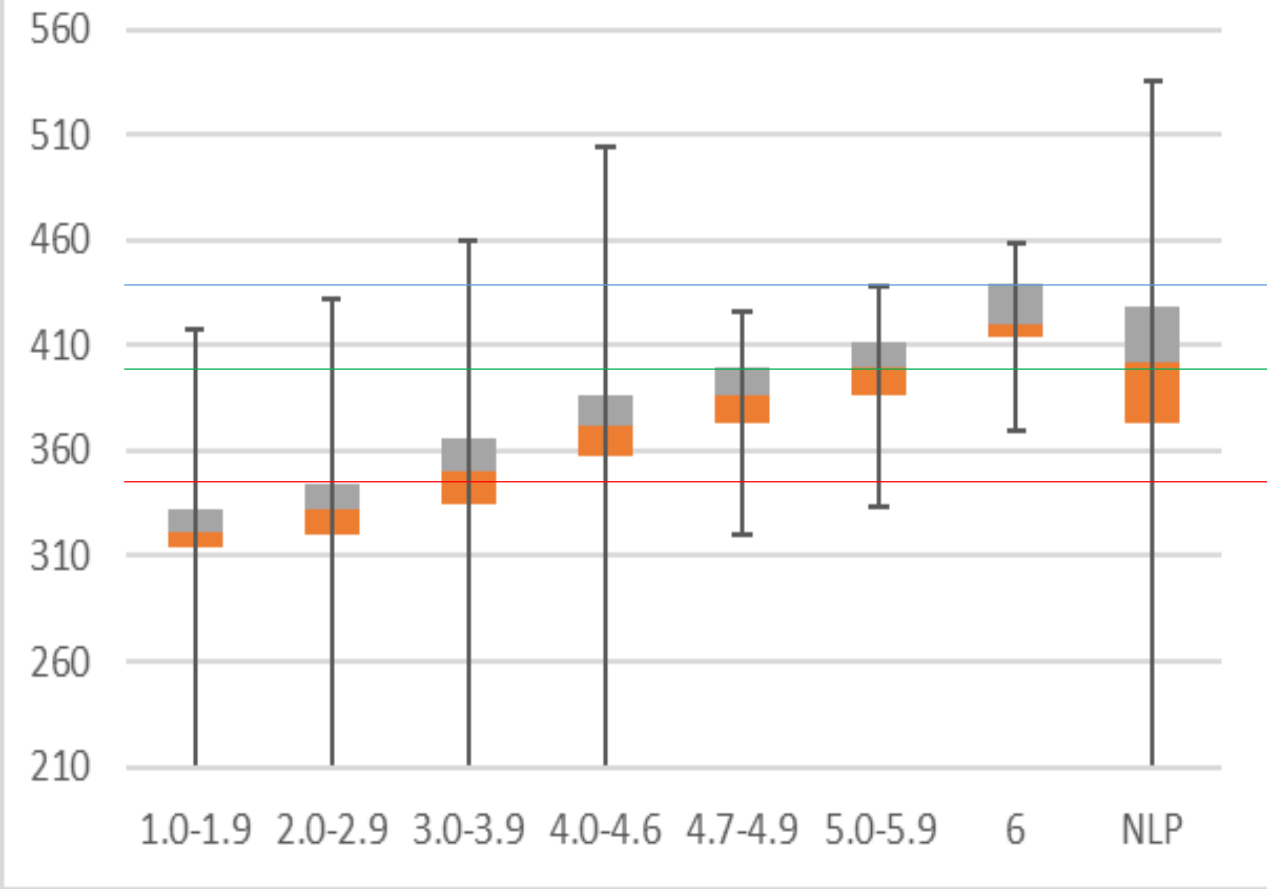


	1.0-1.9	2.0-2.9	3.0-3.9	4.0-4.6	4.7-4.9	5.0-5.9	6	NLP
Minimum	170	170	170	264	170	306	355	170
Q1	262	287	317.5	350	367	382	404	361
Median	290	304	337	365	381	395	416	389
Q2	312	323	354.5	382	393	408	432	414
Maximum	369	389	417	469	438	465	467	799
Mean	269.5	308	293.5	371.5	377	395	411	

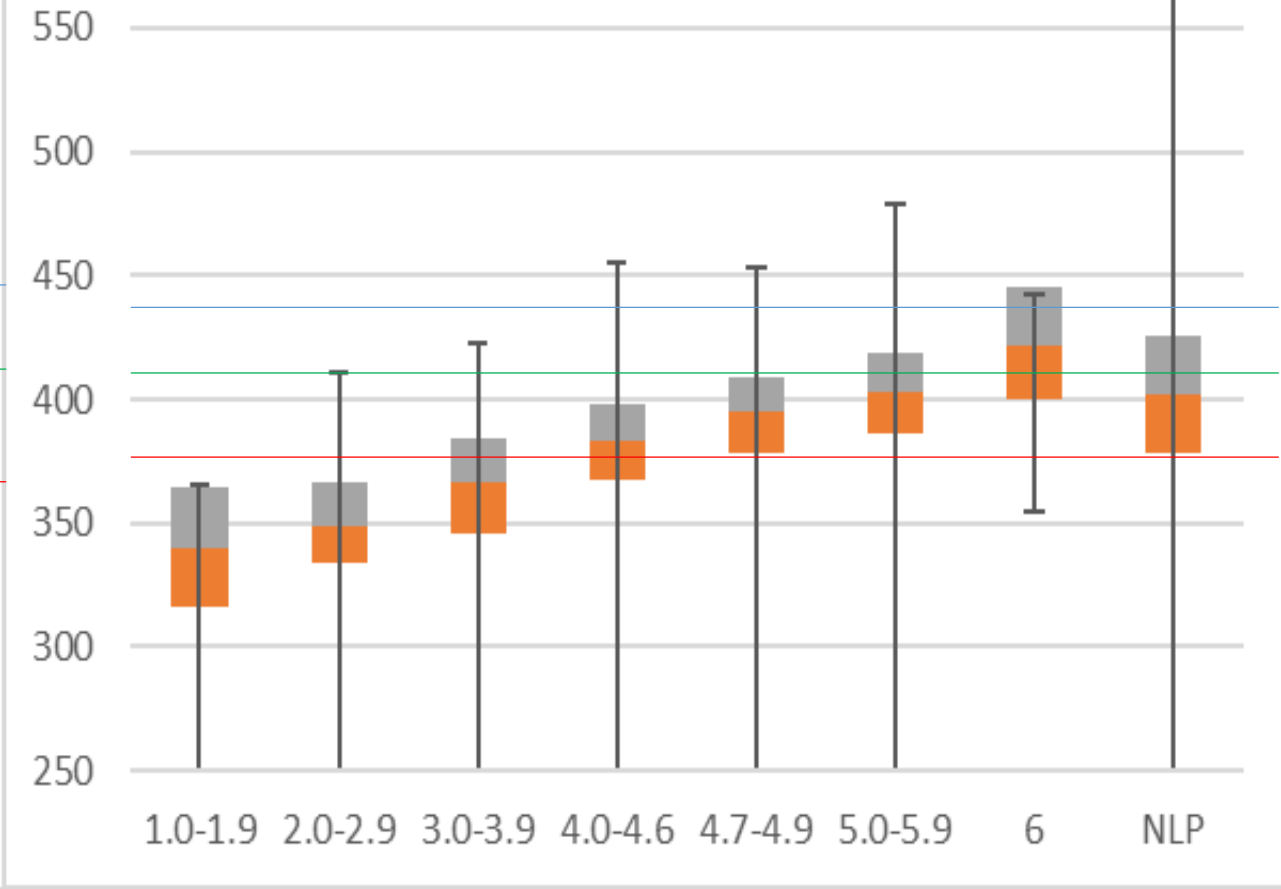
- 2nd Quartile
- 3rd Quartile
- Minimum score for Advanced
- Minimum score for Proficient
- Minimum score for Basic

	1.0-1.9	2.0-2.9	3.0-3.9	4.0-4.6	4.7-4.9	5.0-5.9	6
Minimum	210	210	210	210	210	210	351
Q1	210	244.25	311	343	359	374	395
Median	310	319	338	362	379	394	412
Q3	336	342	360	382	395	411	429
Maximum	393	393	458	454	540	540	480
Mean	363	301.5	319	332	421.5	324.5	415.5

5th ELA



5th Math

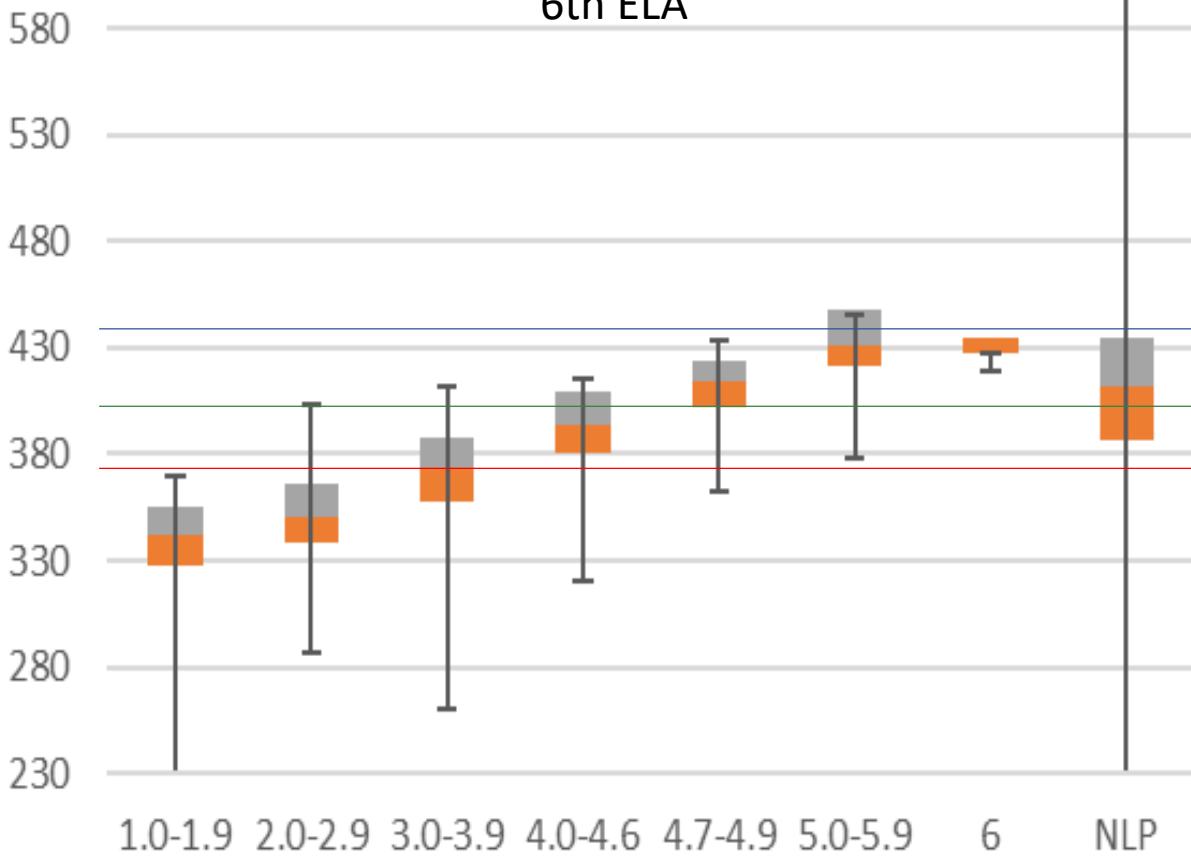


	1.0-1.9	2.0-2.9	3.0-3.9	4.0-4.6	4.7-4.9	5.0-5.9	6	NLP
Minimum	210	210	210	210	320	333	369	210
Q1	314	320.75	335	357	373	385.75	414	373
Median	321	332.5	350	372	386	400	420.5	402
Q3	332	344.25	366	386	400	411	439.25	428
Maximum	409	433	442	456	466	462	471	811
Mean	330	328.5	371	375	399.5	395.5	420	

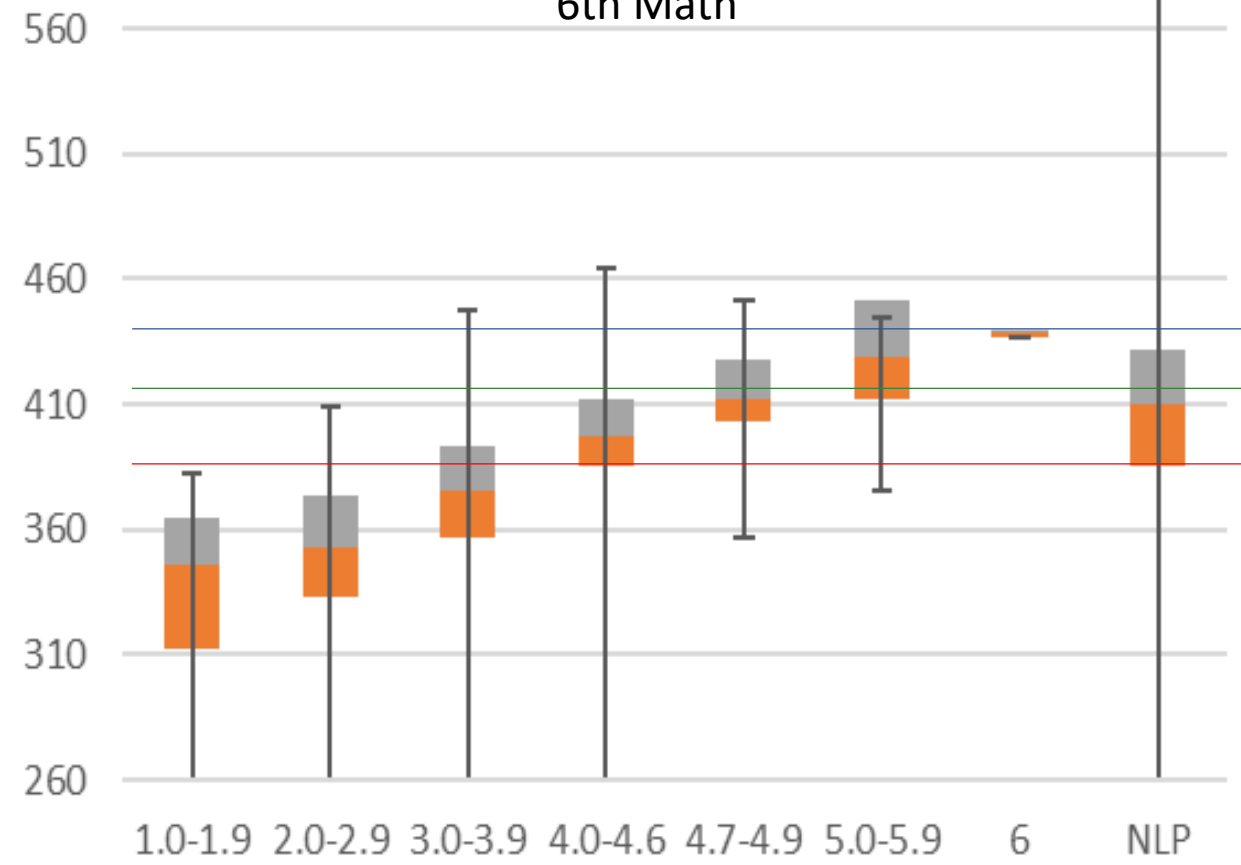
- 2nd Quartile
- 3rd Quartile
- Minimum score for Advanced
- Minimum score for Proficient
- Minimum score for Basic

	1.0-1.9	2.0-2.9	3.0-3.9	4.0-4.6	4.7-4.9	5.0-5.9	6	NLP
Minimum	250	250	250	250	250	250	355	250
Q1	316	334	346	367	378	386	400	378
Median	340	349	366.5	383	395	402.5	422	402
Q3	364.75	366.25	384	398	409	419	445	426
Maximum	414	443	461	486	484	512	487	812
Mean	376	346.5	354	358.5	358.5	386	421	

6th ELA



6th Math

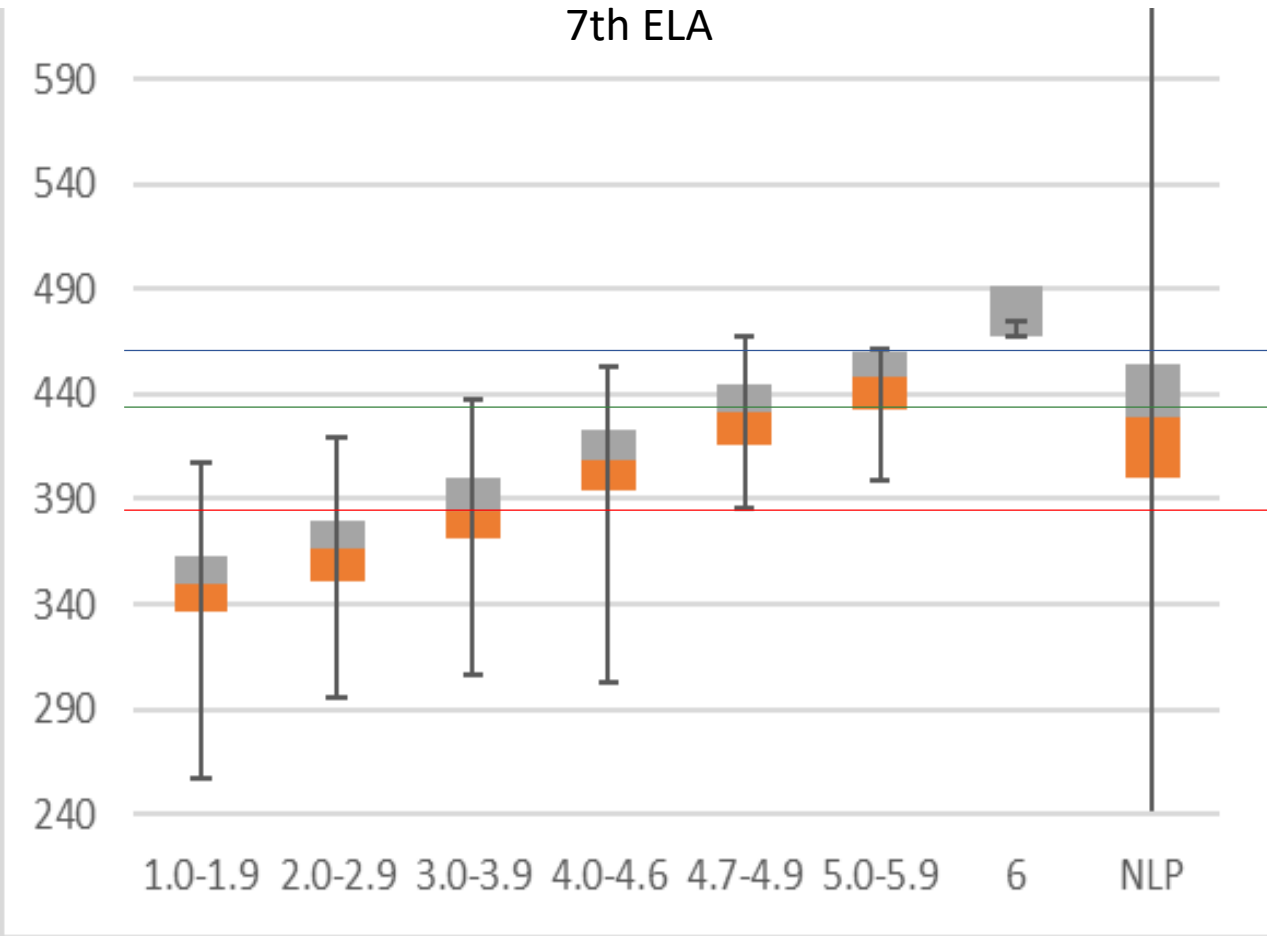


	1.0-1.9	2.0-2.9	3.0-3.9	4.0-4.6	4.7-4.9	5.0-5.9	6	NLP
Minimum	230	287	260	320	362	378	419	230
Q1	328.25	338	358	381	402	421.5	427	387
Median	342	351	373	394	414	431	435	412
Q3	355	366	388	409	424	448	435	435
Maximum	397	432	442	443	456	472	435	862
Mean	353.5	346.5	299	394	413	429.5	427	

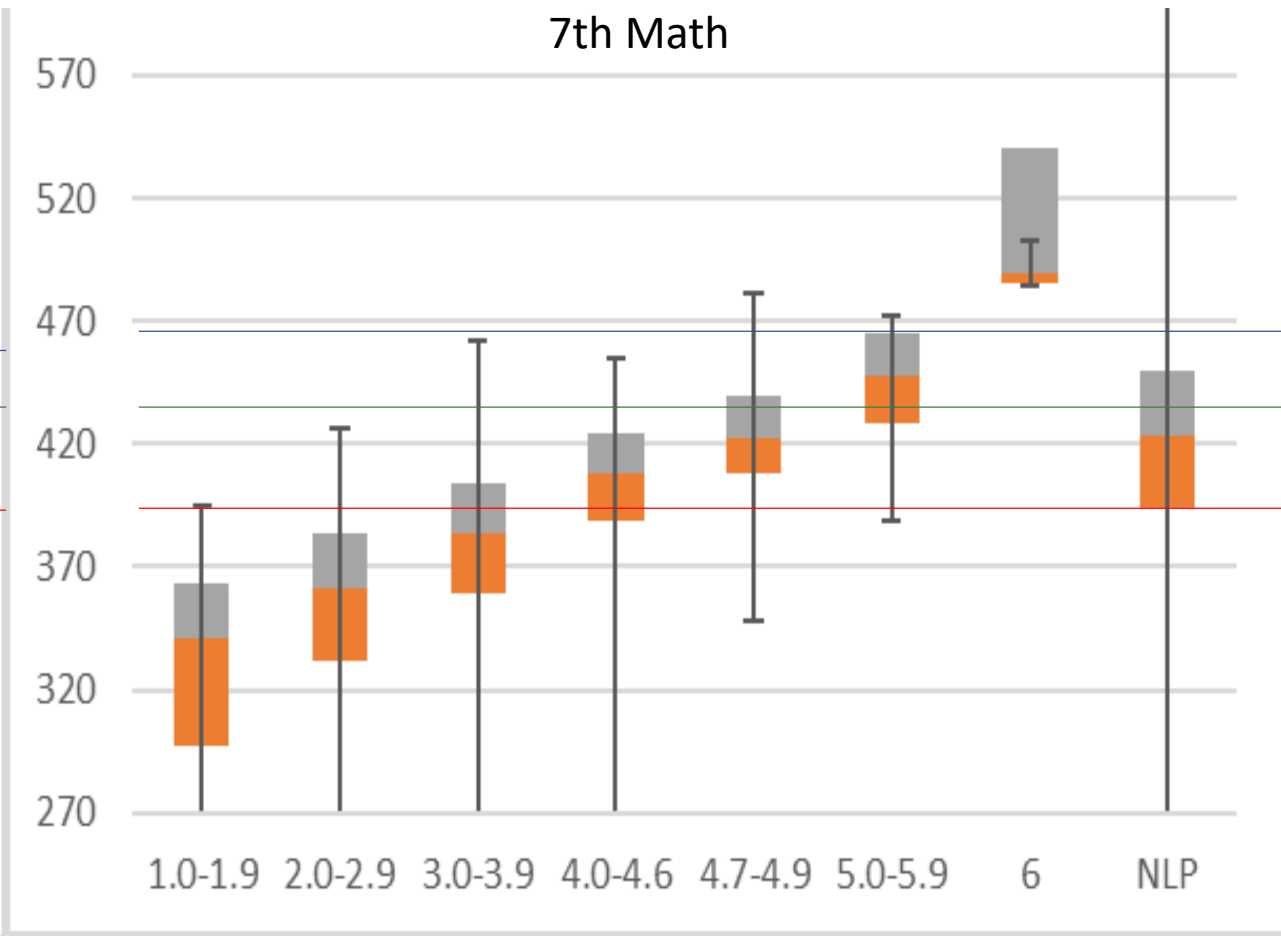
- 2nd Quartile
- 3rd Quartile
- Minimum score for Advanced
- Minimum score for Proficient
- Minimum score for Basic

	1.0-1.9	2.0-2.9	3.0-3.9	4.0-4.6	4.7-4.9	5.0-5.9	6	NLP
Min	260	260	260	260	357	376	437	260
Q1	312.25	333	357	385	403	412.5	437	385
Median	346	353	376	397	412.5	429	438.5	410
Q3	365	374	393	412	428	451.5	440	432
Max	435	450	484	491	476	484	440	818
Mean	347.5	346.5	349	393.5	419.5	426.5	438.5	

7th ELA



7th Math

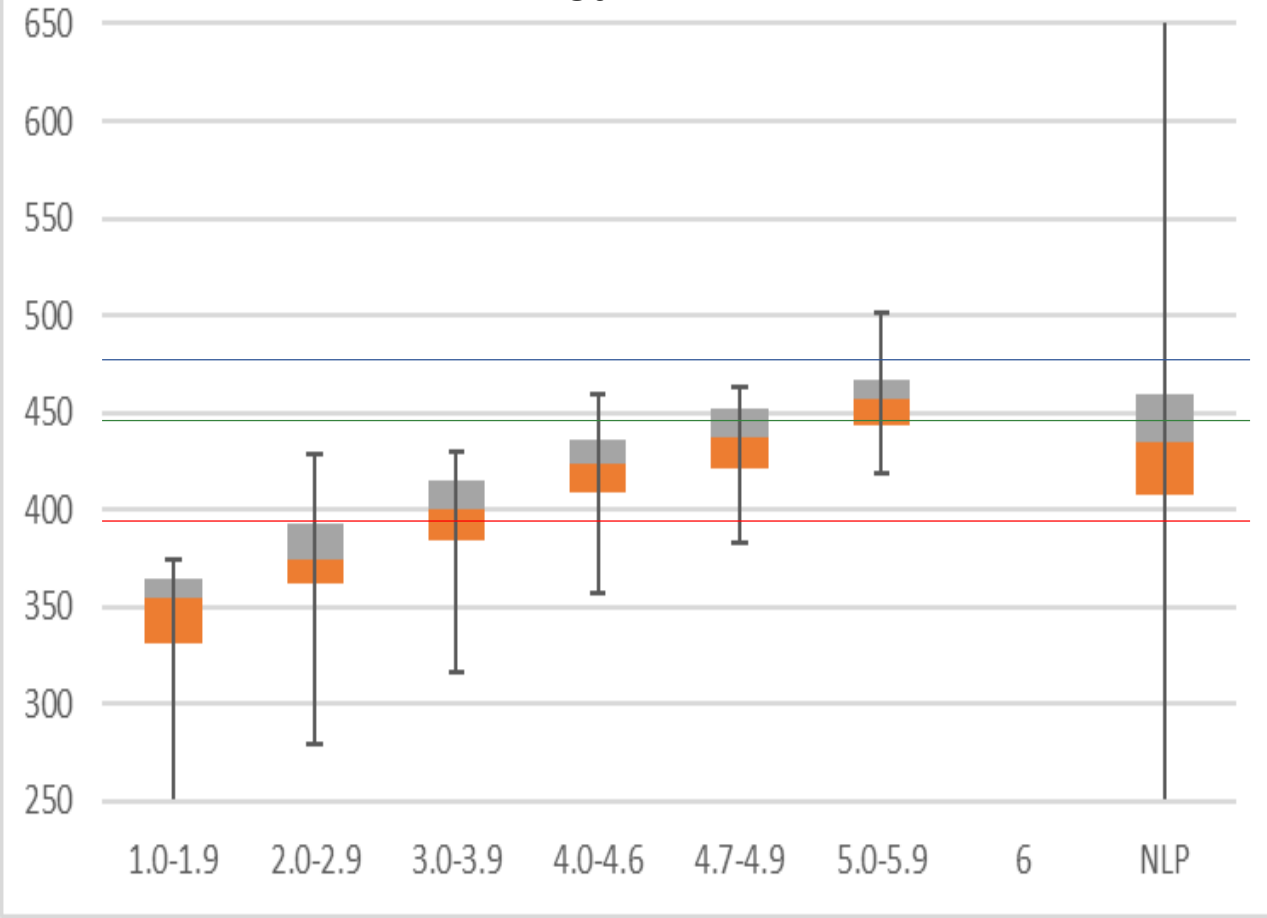


	1.0-1.9	2.0-2.9	3.0-3.9	4.0-4.6	4.7-4.9	5.0-5.9	6	NLP
Min	257	295	306	303	386	399	467	240
Q1	337	351	371	394	415.5	433	467.25	400
Median	350	366	385	409	431	448	468	429
Q3	363	380	400	423	445	460.25	491.25	454
Max	433	448	466	482	497	489	499	879
Mean	370.5	376.5	400.5	407.5	440	436.5	478	

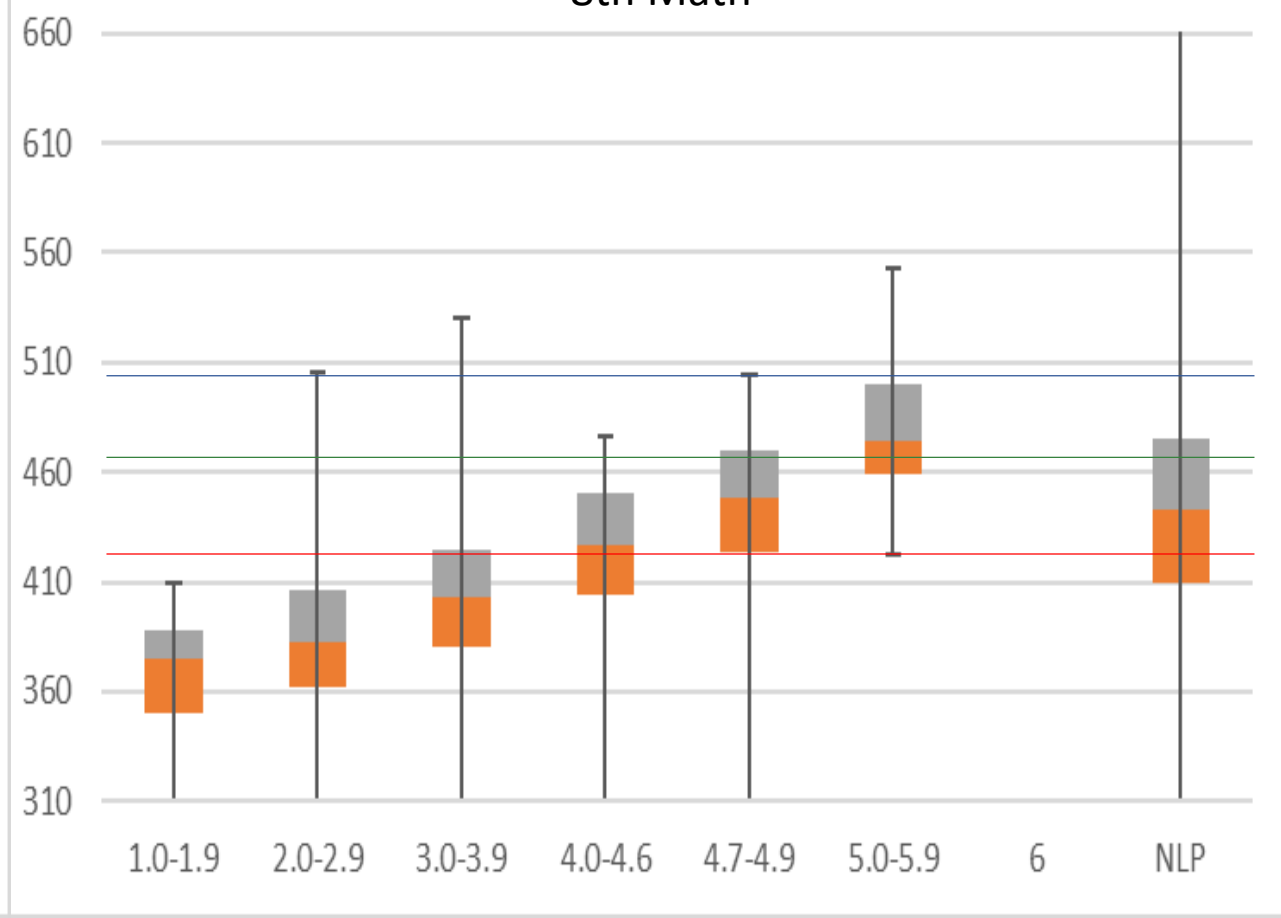
- 2nd Quartile
- 3rd Quartile
- Minimum score for Advanced
- Minimum score for Proficient
- Minimum score for Basic

	1.0-1.9	2.0-2.9	3.0-3.9	4.0-4.6	4.7-4.9	5.0-5.9	6	NLP
Min	270	270	270	270	348	389	484	270
Q1	297	332	359.5	389	408.25	428.75	485.25	394
Median	341	361	384	408	422	448	489	423
Q3	363.5	384	404	424	440	465	540.75	450
Max	461	478	507	490	513	508	558	886
Mean	381	352	364.5	368	440	448.5	510	

8th ELA



8th Math



	1.0-1.9	2.0-2.9	3.0-3.9	4.0-4.6	4.7-4.9	5.0-5.9	6	NLP
Min	250	280	316	357	383	419		250
Q1	331	362	384	409	421.75	444		408
Median	355	375	400	424	437	457		435
Q3	365	393	415	436	452	467		460
Max	408	460	461	486	494	525		941
Mean	344.5	365.5	405.5	421.5	441	447.5		

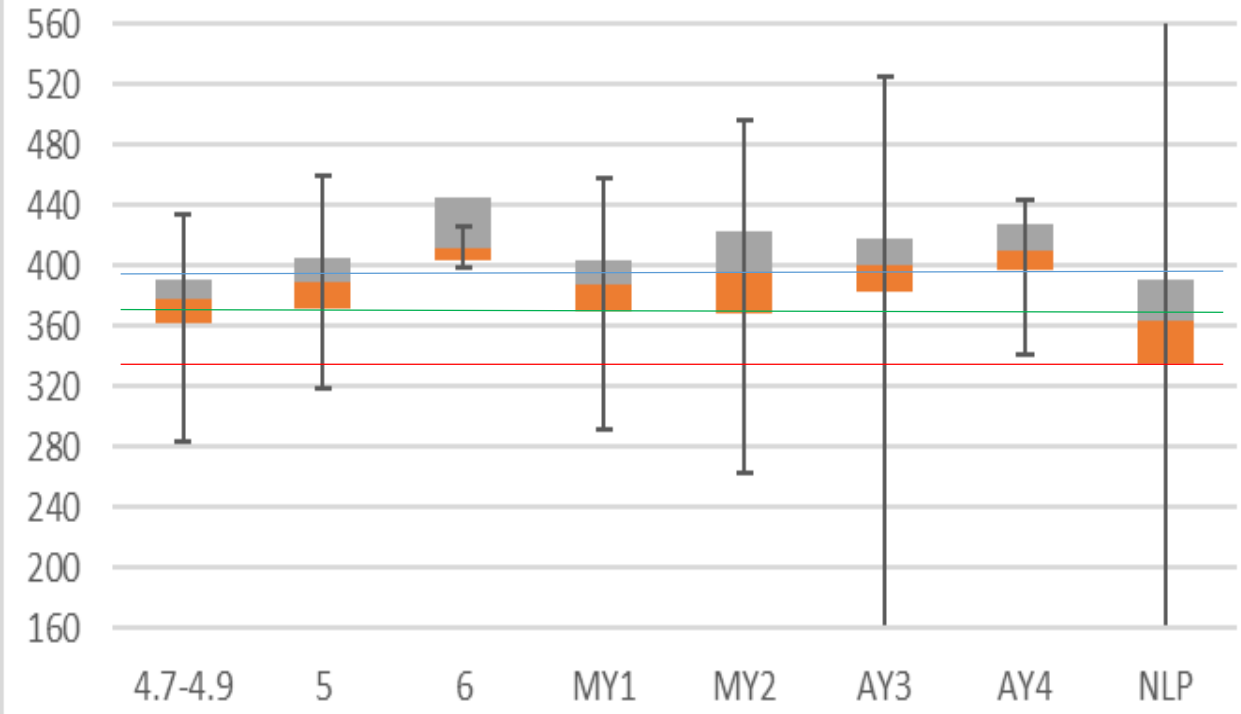
- 2nd Quartile
- 3rd Quartile
- Minimum score for Advanced
- Minimum score for Proficient
- Minimum score for Basic

	1.0-1.9	2.0-2.9	3.0-3.9	4.0-4.6	4.7-4.9	5.0-5.9	6	NLP
min	310	310	310	310	310	422		310
Q1	350	362	380	404	423	459.5		409
Median	375	382	403	427	448	474		443
Q3	388	406	424.75	450	470	500		475
Max	448	550	575	522	551	593		1028
Mean	376.5	399	406.5	414.5	429	520		

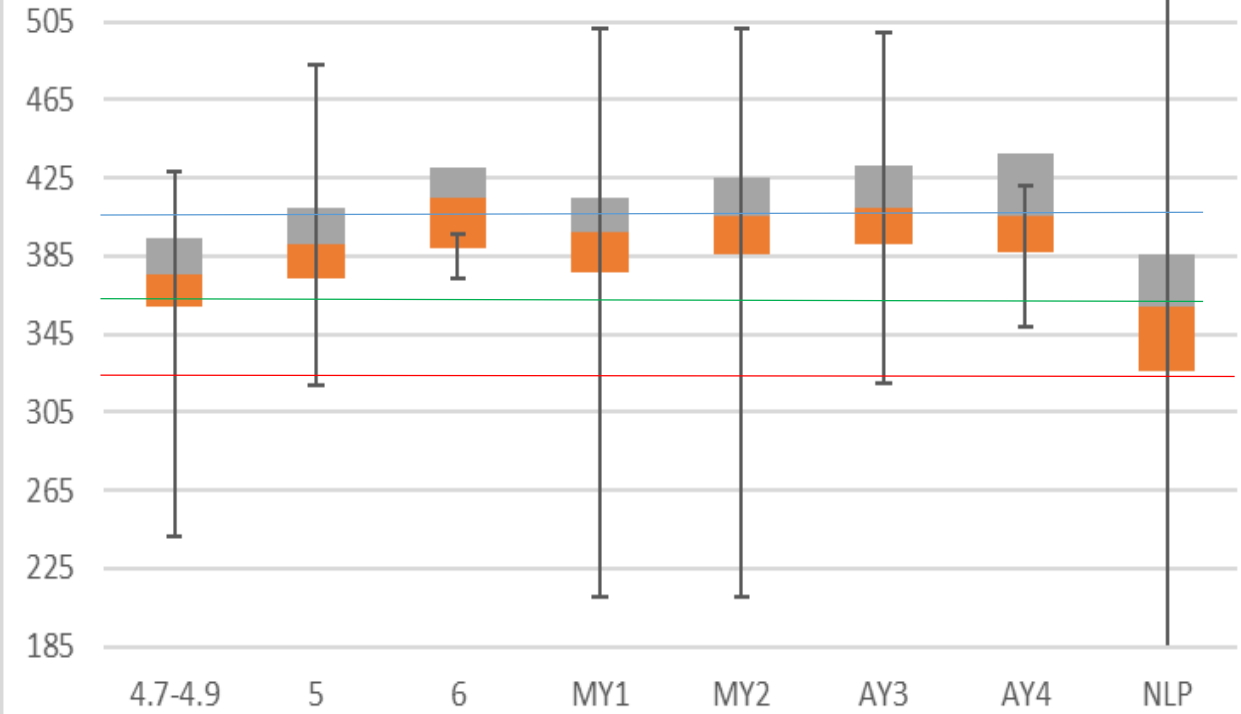
2018 MAP-ACCESS Boxplots

Proficient – Monitored – Former ELs

3rd ELA



3rd Math

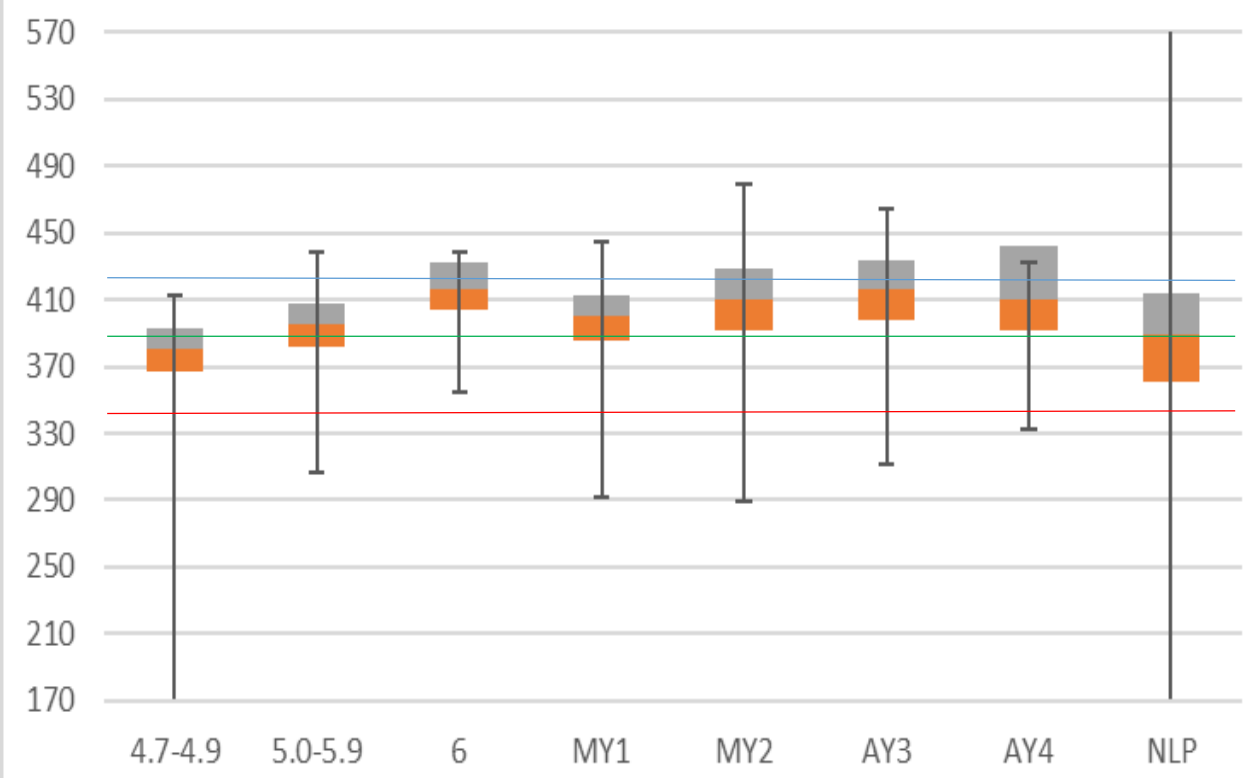


	4.7-4.9	5	6	MY1	MY2	AY3	AY4	NLP
Min	284	319	398	292	262	160	341	160
Q1	362	372	403.5	369	368.75	382.5	397.5	334
Median	377	389	411	388	395	400	409	363
Q3	390.75	405	445	404	423	417	427	391
Max	462	493	468	493	550	560	473	675

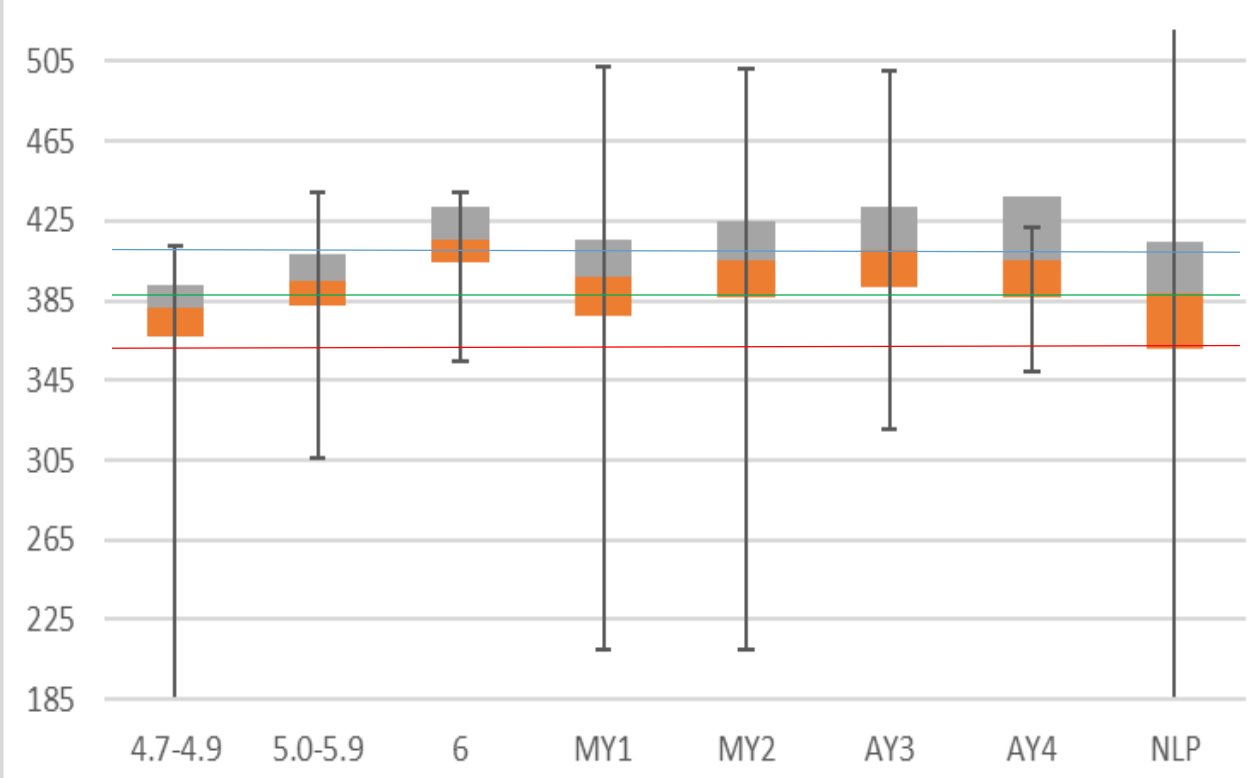
- 2nd Quartile
- 3rd Quartile
- Minimum score for Advanced
- Minimum score for Proficient
- Minimum score for Basic

	4.7-4.9	5	6	MY1	MY2	AY3	AY4	NLP
Min	241	319	374	210	210	320	349	185
Q1	359	373	388.5	377	386.25	391.5	386.5	326
Median	376	391	415	397	405	410	405.5	359
Q3	394	410	430.25	415	425	431.5	437.25	386
Max	463	520	438	540	540	540	472	704

4th Grade ELA



4th Grade Math

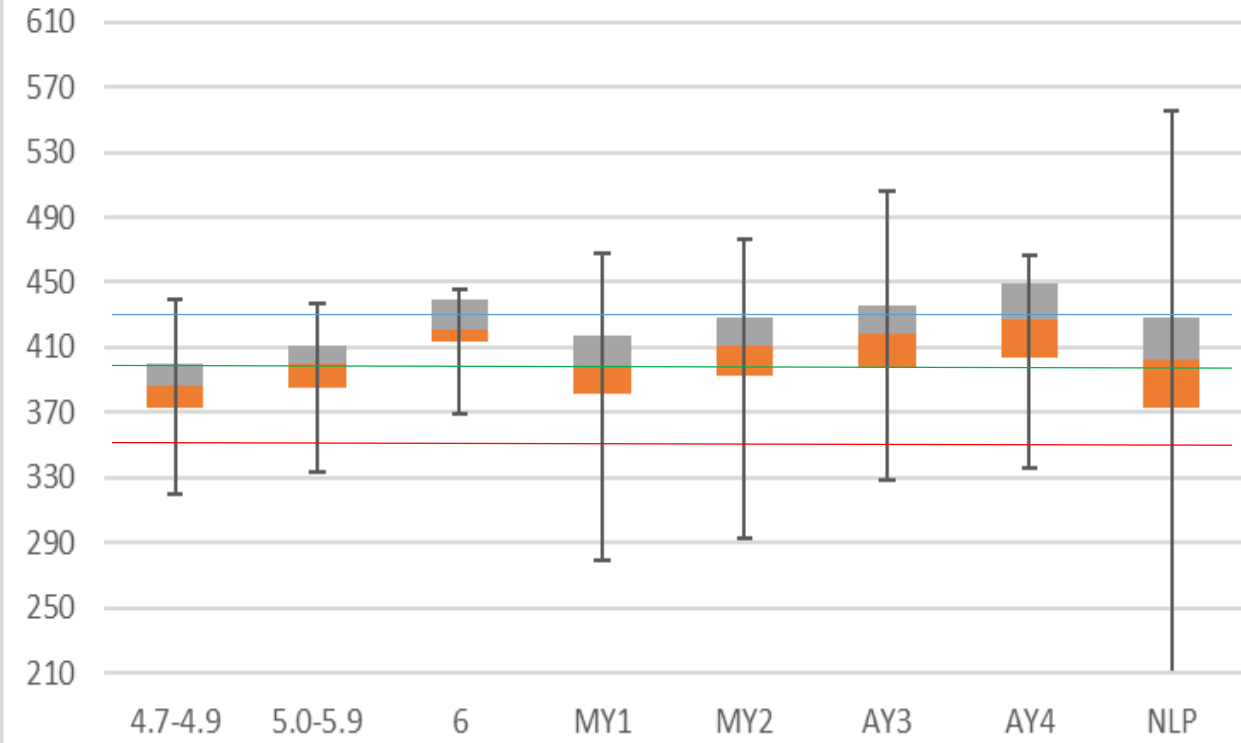


- 2nd Quartile
- 3rd Quartile
- Minimum score for Advanced
- Minimum score for Proficient
- Minimum score for Basic

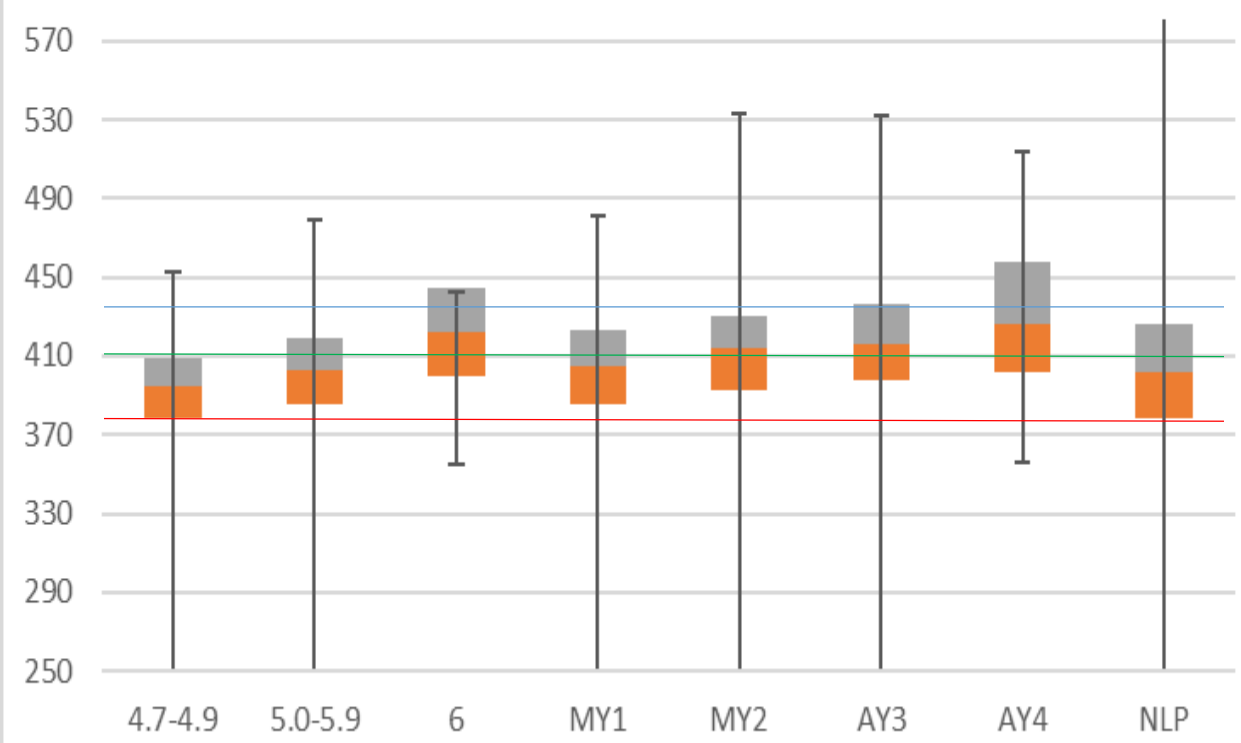
	4.7-4.9	5.0-5.9	6	MY1	MY2	AY3	AY4	NLP
Minimum	170	306	355	292	289	312	332	170
Q1	367	382	404	385	392	398	392	361
Median	381	395	416	400	410	416	410	389
Q2	393	408	432	413	428	434	442.25	414
Maximum	438	465	467	473	515	500	483	799

	4.7-4.9	5.0-5.9	6	MY1	MY2	AY3	AY4	NLP
Minimum	170	306	355	210	210	320	349	170
Q1	367	382	404	377	386.25	391.5	386.5	361
Median	381	395	416	397	405	410	405.5	389
Q2	393	408	432	415	425	431.5	437.25	414
Maximum	438	465	467	540	540	540	472	799

5th ELA



5th Math

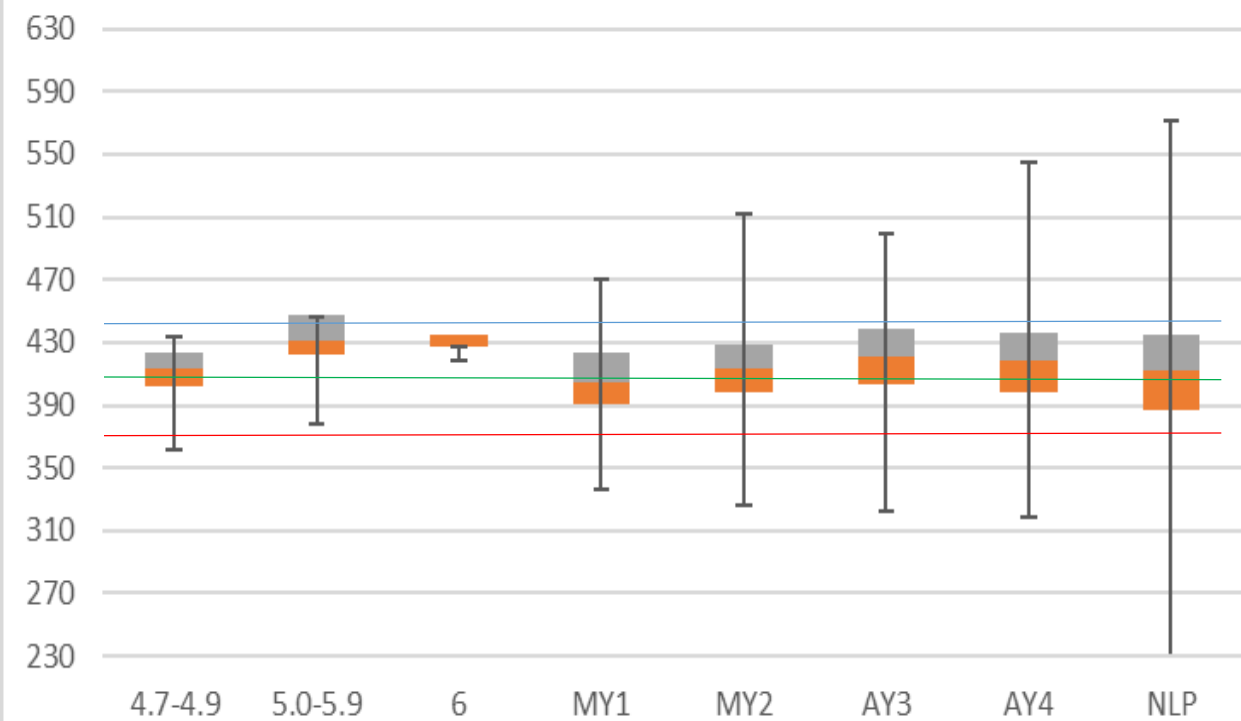


- 2nd Quartile
- 3rd Quartile
- Minimum score for Advanced
- Minimum score for Proficient
- Minimum score for Basic

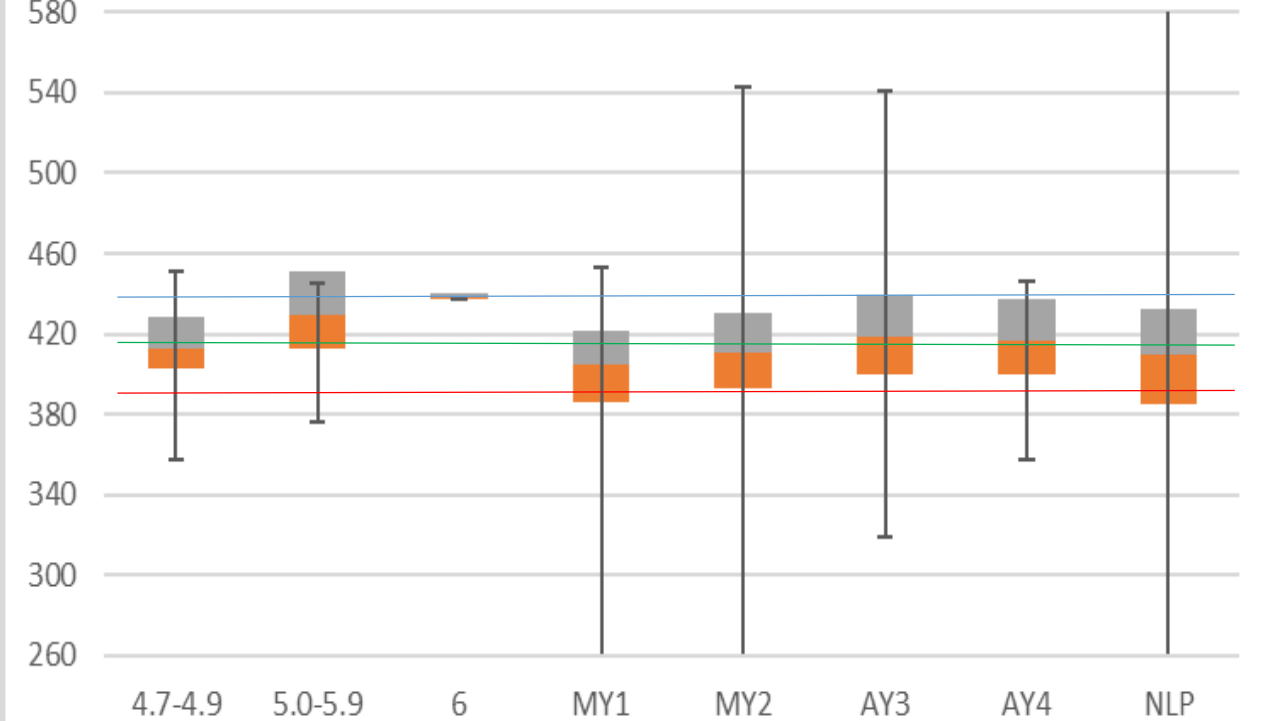
	4.7-4.9	5.0-5.9	6	MY1	MY2	AY3	AY4	NLP
Minimum	320	333	369	279	293	329	336	210
Q1	373	385.75	414	382	393	398	404	373
Median	386	400	420.5	399	411	418.5	427.5	402
Q3	400	411	439.25	417	428	436	449.25	428
Maximum	466	462	471	503	512	544	512	610

	4.7-4.9	5.0-5.9	6	MY1	MY2	AY3	AY4	NLP
Minimum	250	250	355	250	250	250	356	250
Q1	378	386	400	386	393	398	402	378
Median	395	402.5	422	405	414	416	426.5	402
Q3	409	419	445	423	430	436.25	458	426
Maximum	484	512	487	518	570	570	570	812

6th ELA



6th Math

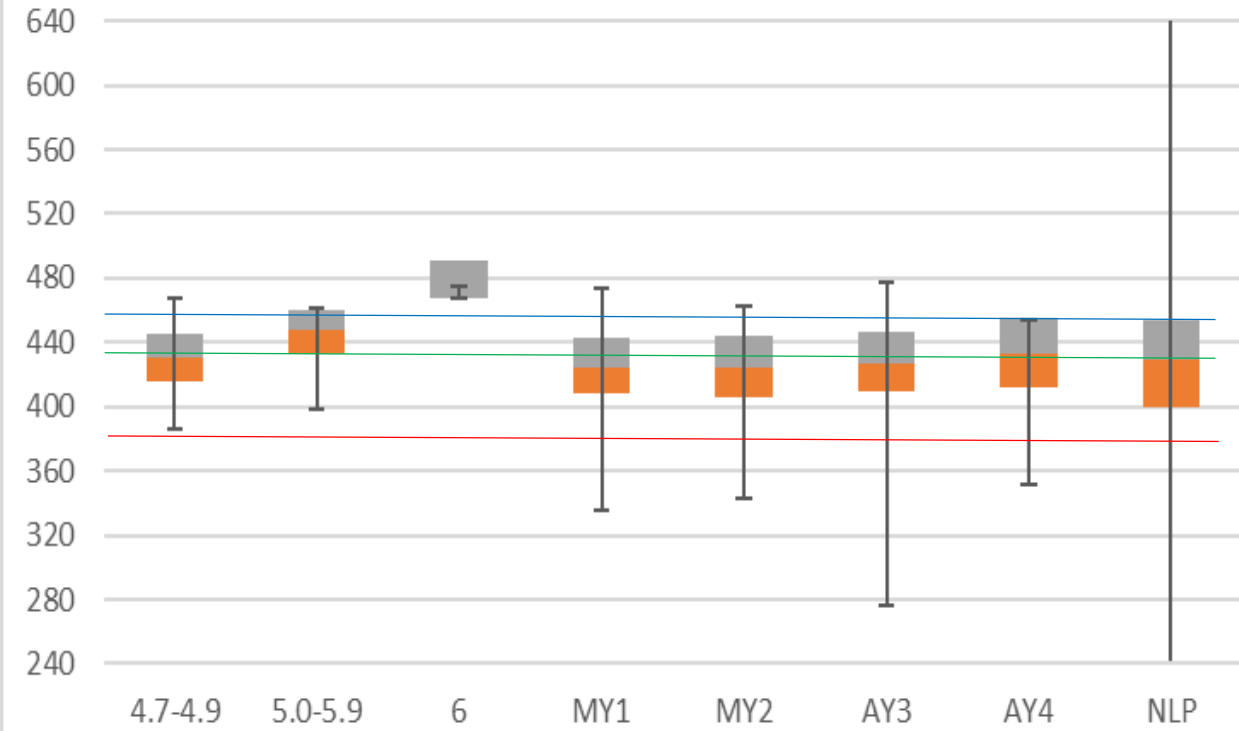


	4.7-4.9	5.0-5.9	6	MY1	MY2	AY3	AY4	NLP
Minimum	362	378	419	336	326	323	318	230
Q1	402	422	427	391	398	403	398	387
Median	414	431	435	405	414	421	418	412
Q3	424	448	435	423.25	429	439	436	435
Maximum	456	472	435	502	543	535	583	620

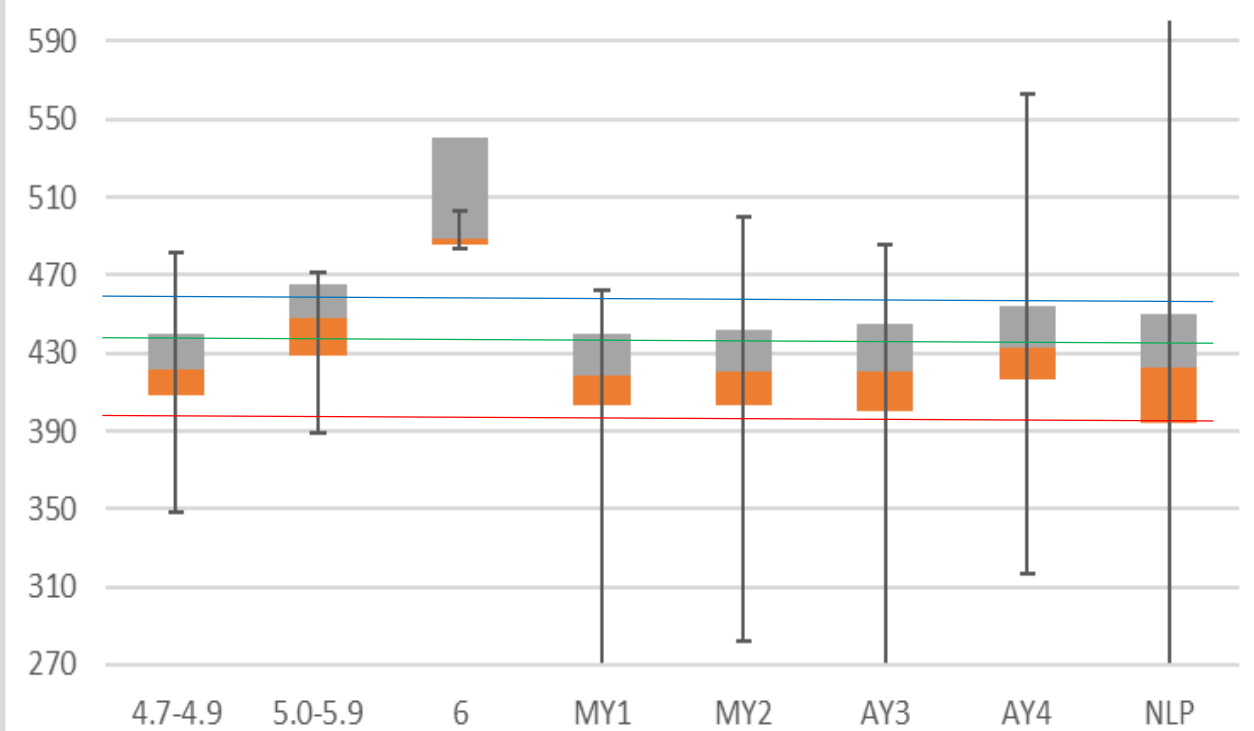
- 2nd Quartile
- 3rd Quartile
- Minimum score for Advanced
- Minimum score for Proficient
- Minimum score for Basic

	4.7-4.9	5.0-5.9	6	MY1	MY2	AY3	AY4	NLP
Min	357	376	437	260	260	319	357	260
Q1	403	412.5	437	385.75	392.5	399.5	400	385
Median	412.5	429	438.5	404.5	411	419	416.5	410
Q3	428	451.5	440	422	430	439	437.25	432
Max	476	484	440	489	580	580	483	818

7th ELA



7th Math

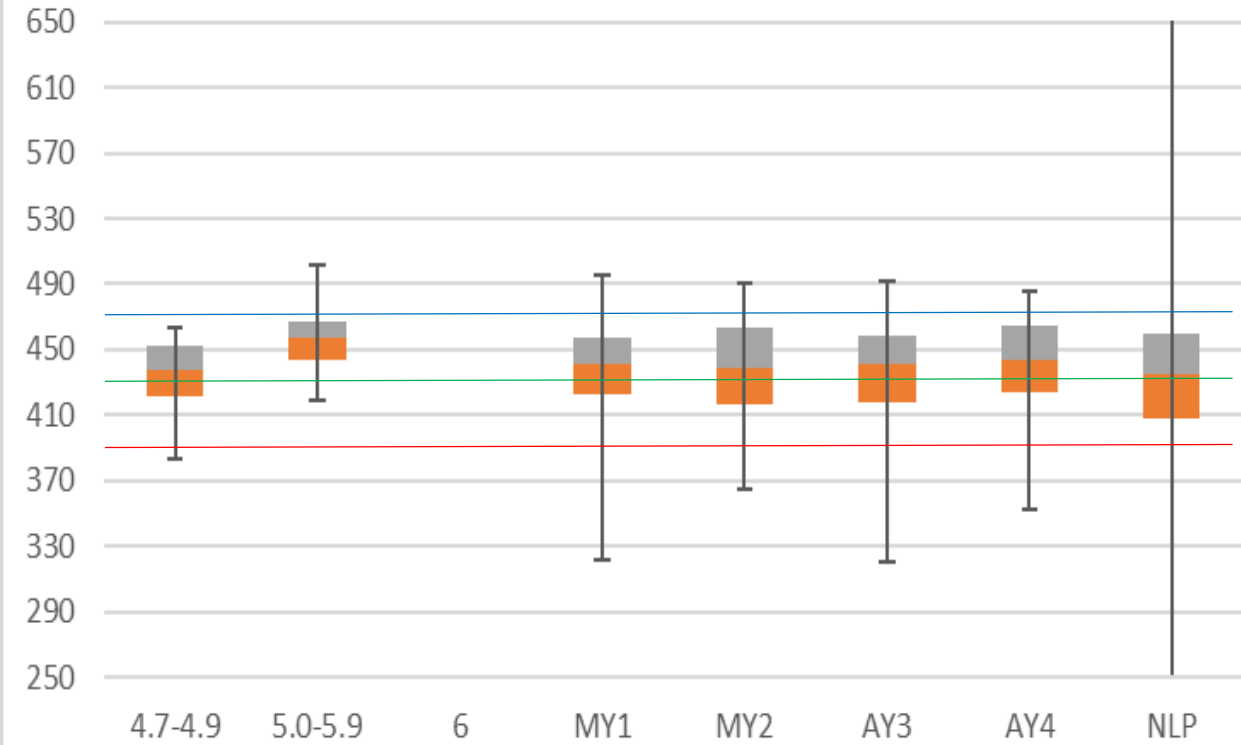


	4.7-4.9	5.0-5.9	6	MY1	MY2	AY3	AY4	NLP
Min	386	399	467	336	343	276	352	240
Q1	415.5	433	467.25	408	406	409	412	400
Median	431	448	468	424	424	427	433	429
Q3	445	460.25	491.25	442.25	444	447	455.5	454
Max	497	489	499	508	500	515	498	879

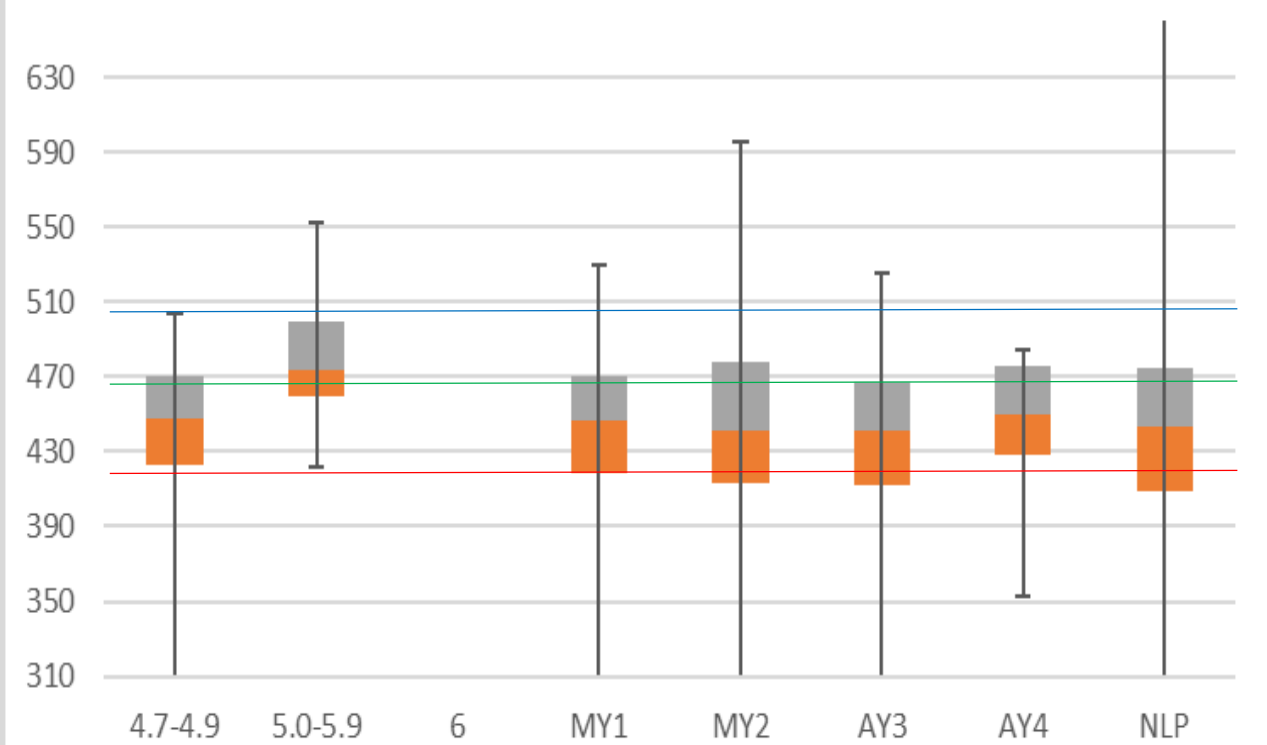
- 2nd Quartile
- 3rd Quartile
- Minimum score for Advanced
- Minimum score for Proficient
- Minimum score for Basic

	4.7-4.9	5.0-5.9	6	MY1	MY2	AY3	AY4	NLP
Min	348	389	484	270	282	270	317	270
Q1	408.25	428.75	485.25	402.75	403	400	416.25	394
Median	422	448	489	418.5	421	421	432.5	423
Q3	440	465	540.75	440	442	445	453.75	450
Max	513	508	558	499	539	531	600	886

8th ELA



8th Math



	4.7-4.9	5.0-5.9	6	MY1	MY2	AY3	AY4	NLP
min	383	419		321	365	320	352	250
Q1	421.75	444		422.25	417	417.5	424	408
Median	437	457		441	439	441	443.5	435
Q3	452	467		457.75	463	459	464	460
Max	494	525		531	537	533	526	941

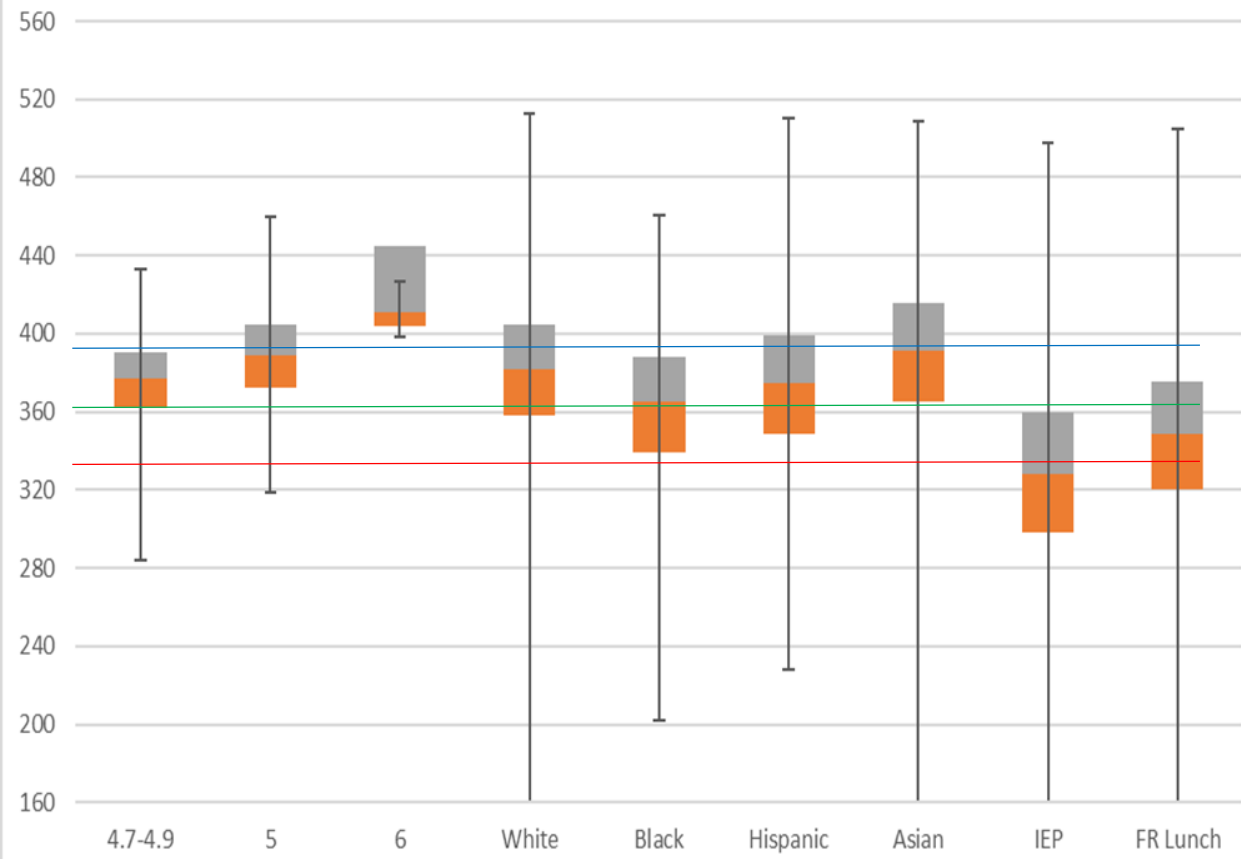
- 2nd Quartile
- 3rd Quartile
- Minimum score for Advanced
- Minimum score for Proficient
- Minimum score for Basic

	4.7-4.9	5.0-5.9	6	MY1	MY2	AY3	AY4	NLP
min	310	422		310	310	310	353	310
Q1	423	459.5		419	412.75	412.5	428.5	409
Median	448	474		447	441.5	441	450	443
Q3	470	500		470	477.5	467	475.75	475
Max	551	593		581	660	580	532	1028

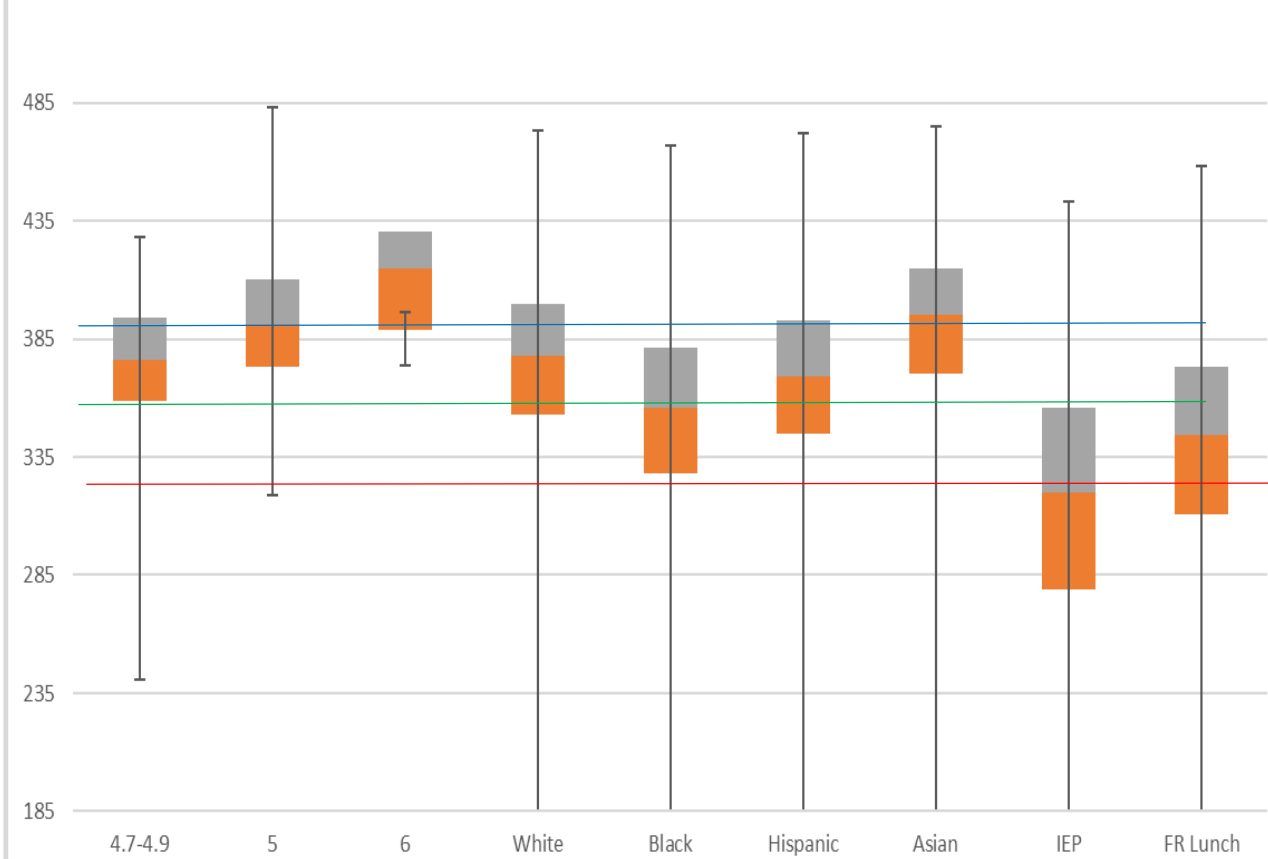
Subgroup Data

Proficient ELs (4.7-6), White, Black, Hispanic, Asian, IEP and F/R Lunch

3rd ELA



3rd Math

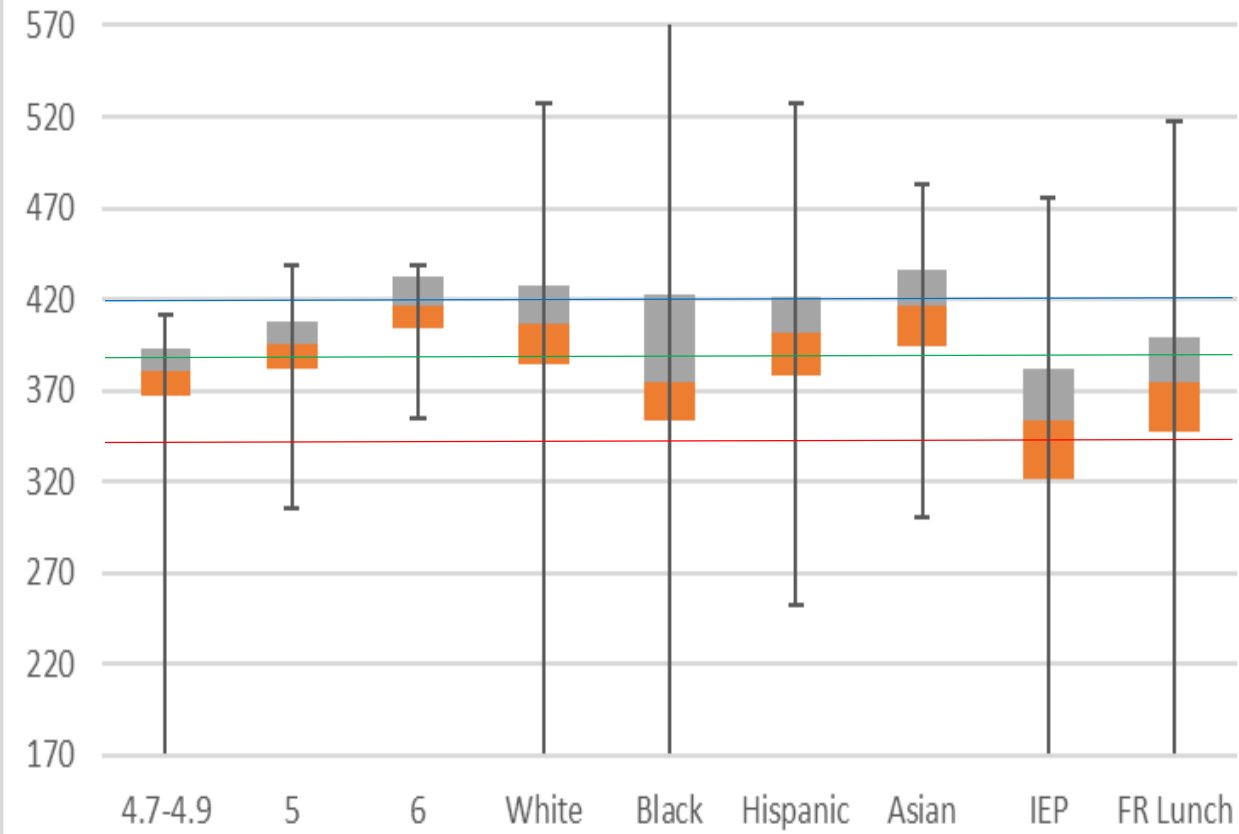


	4.7-4.9	5	6	White	Black	Hispanic	Asian	IEP	FR Lunch
Min	284	319	398	160	202	228	160	160	160
Q1	362	372	403.5	358	339	349	365	298	320
Median	377	389	411	382	365	375	391	328	349
Q3	390.75	405	445	405	388	399	416	360	375.5
Max	462	493	468	560	510	560	560	560	560

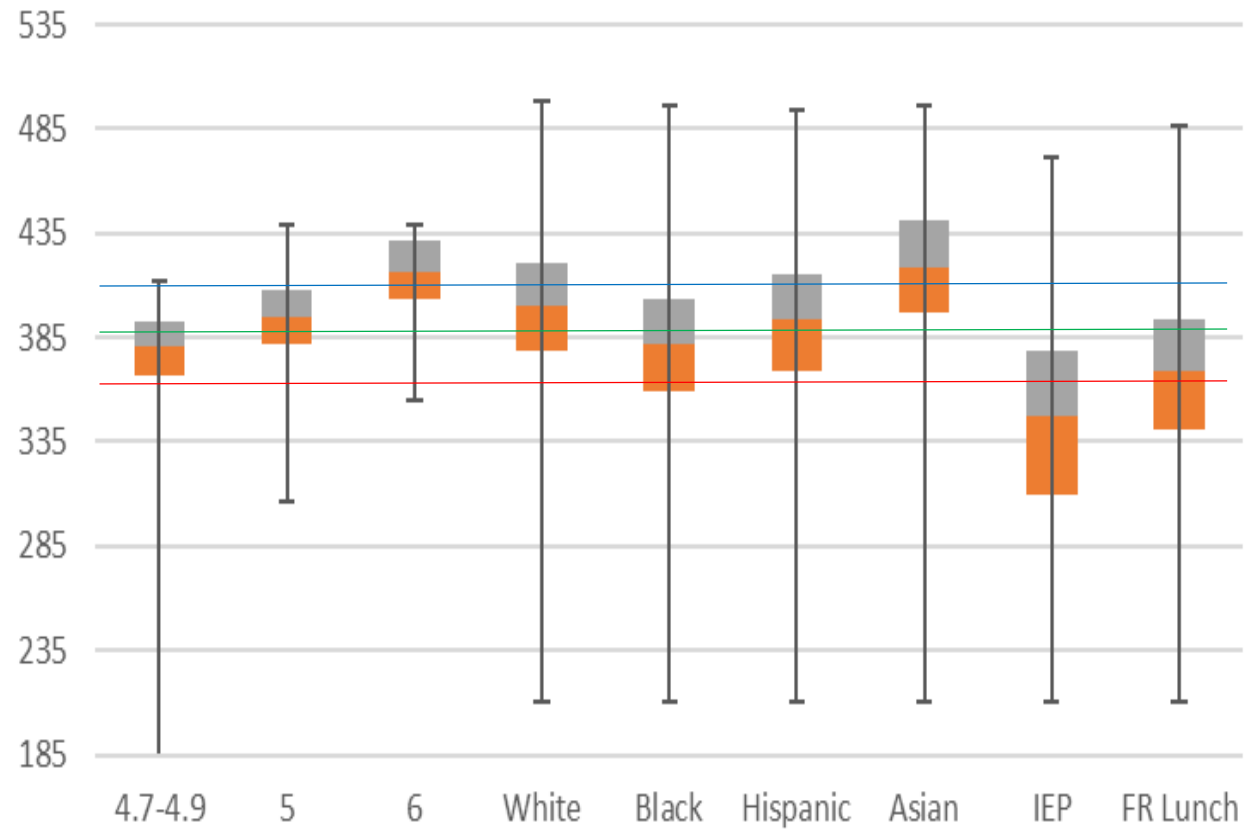
- 2nd Quartile
- 3rd Quartile
- Minimum score for Advanced
- Minimum score for Proficient
- Minimum score for Basic

	4.7-4.9	5	6	White	Black	Hispanic	Asian	IEP	FR Lunch
Min	241	319	374	185	185	185	185	185	185
Q1	359	373	388.5	353	328	345	370	279	311
Median	376	391	415	378	356	369	395	320	344
Q3	394	410	430.25	400	381	393	415	356	373
Max	463	520	438	520	520	520	520	520	520

4th ELA



4th Math

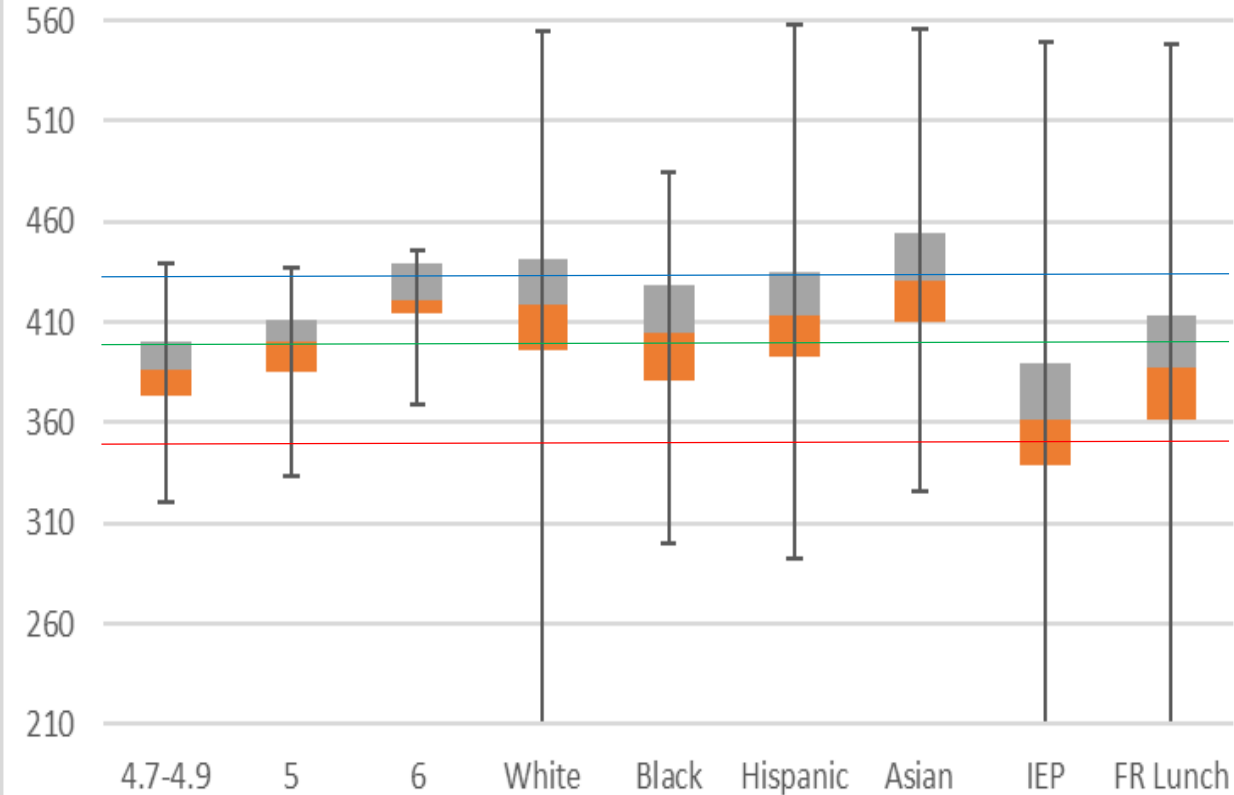


	4.7-4.9	5	6	White	Black	Hispanic	Asian	IEP	FR Lunch
Minimum	170	306	355	170	160	252	301	170	170
Q1	367	382	404	384	353	378	394	321	347
Median	381	395	416	406	374	401	416	353	374
Q3	393	408	432	427	423	421	436.5	382	399
Maximum	438	465	467	570	650	570	526	536	570

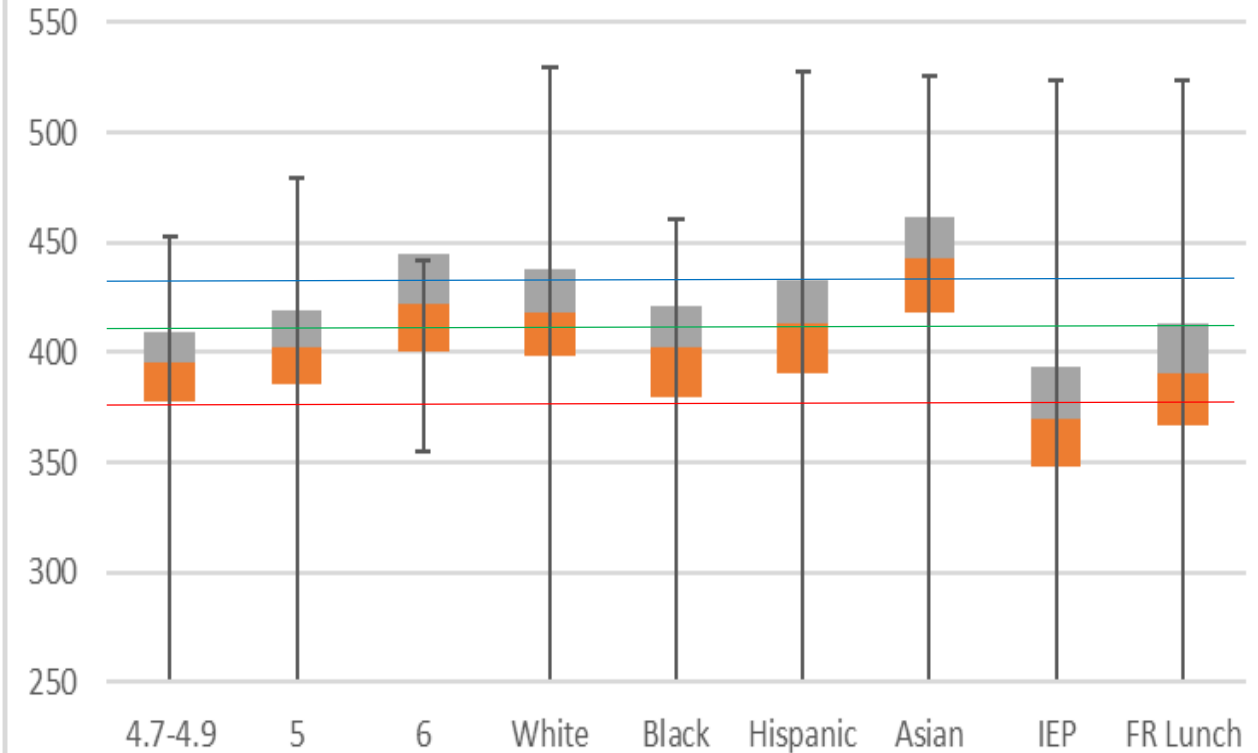
- 2nd Quartile
- 3rd Quartile
- Minimum score for Advanced
- Minimum score for Proficient
- Minimum score for Basic

	4.7-4.9	5	6	White	Black	Hispanic	Asian	IEP	FR Lunch
Minimum	170	306	355	210	210	210	210	210	210
Q1	367	382	404	379	359	369	397	310	341
Median	381	395	416	400	382	394	419	347	369
Q2	393	408	432	421	403	415	441	379	394
Maximum	438	465	467	540	540	540	540	540	540

5th ELA



5th Math

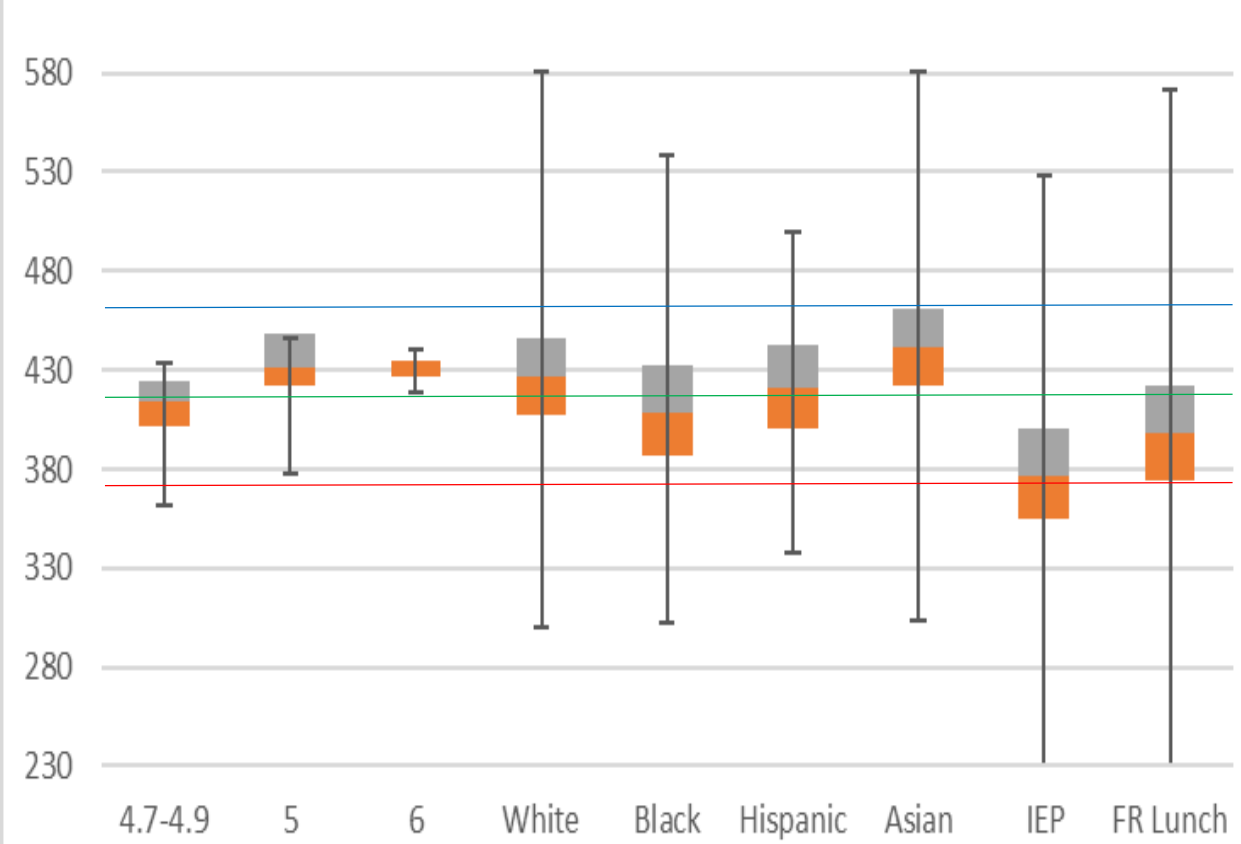


	4.7-4.9	5	6	White	Black	Hispanic	Asian	IEP	FR Lunch
Minimum	320	333	369	210	300	292	326	210	210
Q1	373	385.75	414	396	381	393	410	339	361
Median	386	400	420.5	419	405	413.5	431	362	387
Q3	400	411	439.25	441	428	434.75	454	390	413
Maximum	466	462	471	600	531	600	600	600	600

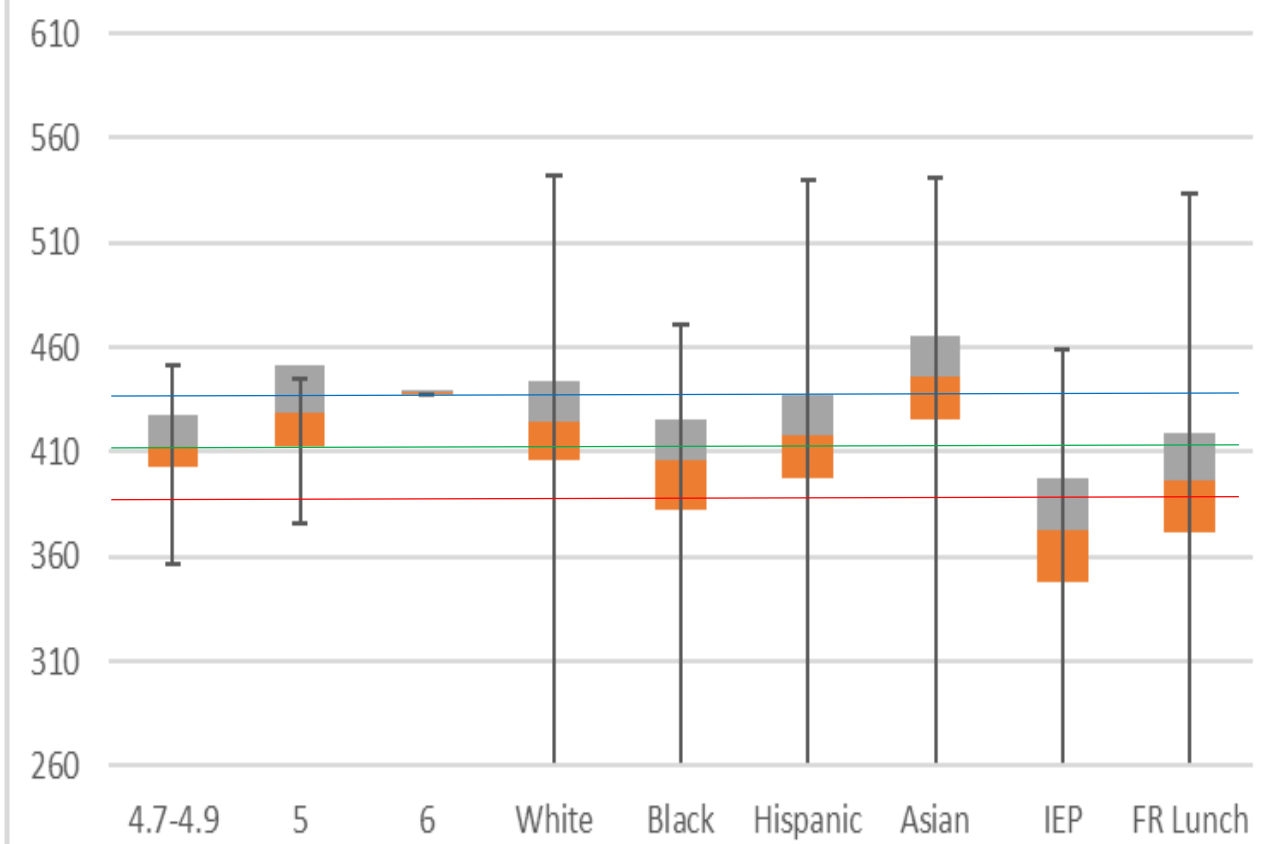
- 2nd Quartile
- 3rd Quartile
- Minimum score for Advanced
- Minimum score for Proficient
- Minimum score for Basic

	4.7-4.9	5	6	White	Black	Hispanic	Asian	IEP	FR Lunch
Minimum	250	250	355	250	250	250	250	250	250
Q1	378	386	400	398	380	391	418	348	367
Median	395	402.5	422	418	402	413	443	370	391
Q3	409	419	445	438	421	433	462	394	413
Maximum	484	512	487	570	502	570	570	570	570

6th ELA



6th Math

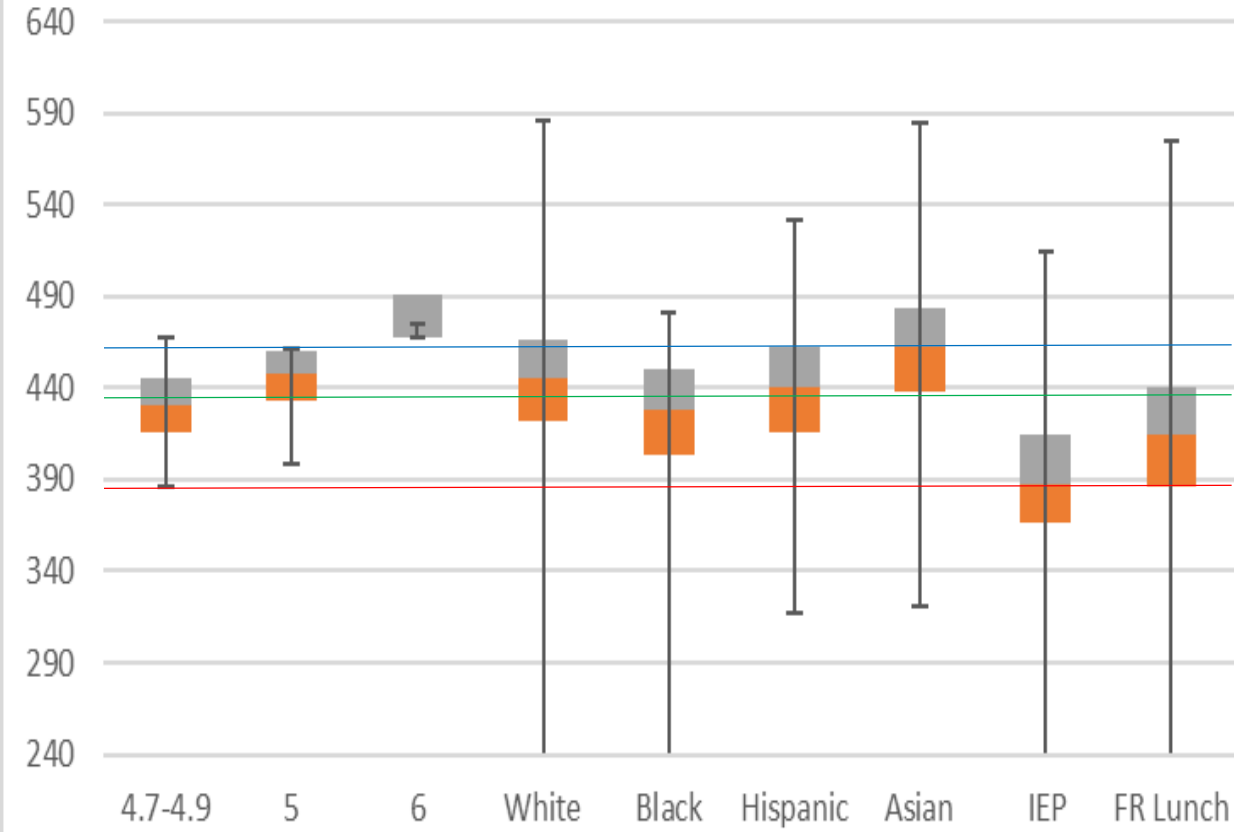


	4.7-4.9	5	6	White	Black	Hispanic	Asian	IEP	FR Lunch
Minimum	362	378	419	300	302	338	303	230	230
Q1	402	422	427	407	387	401	422	355	374
Median	414	431	435	427	409	421	441	376	398
Q3	424	448	435	446	432	443	461	400	422
Maximum	456	472	448	620	583	542	620	573	620

- 2nd Quartile
- 3rd Quartile
- Minimum score for Advanced
- Minimum score for Proficient
- Minimum score for Basic

	4.7-4.9	5	6	White	Black	Hispanic	Asian	IEP	FR Lunch
Min	357	376	437	260	260	260	260	260	260
Q1	403	412.5	437	406	382	398	426	348	372
Median	412.5	429	438.5	425	406	418	446	373	397
Q3	428	451.5	440	444	426	438	465	398	419
Max	476	484	440	580	515	580	580	509	580

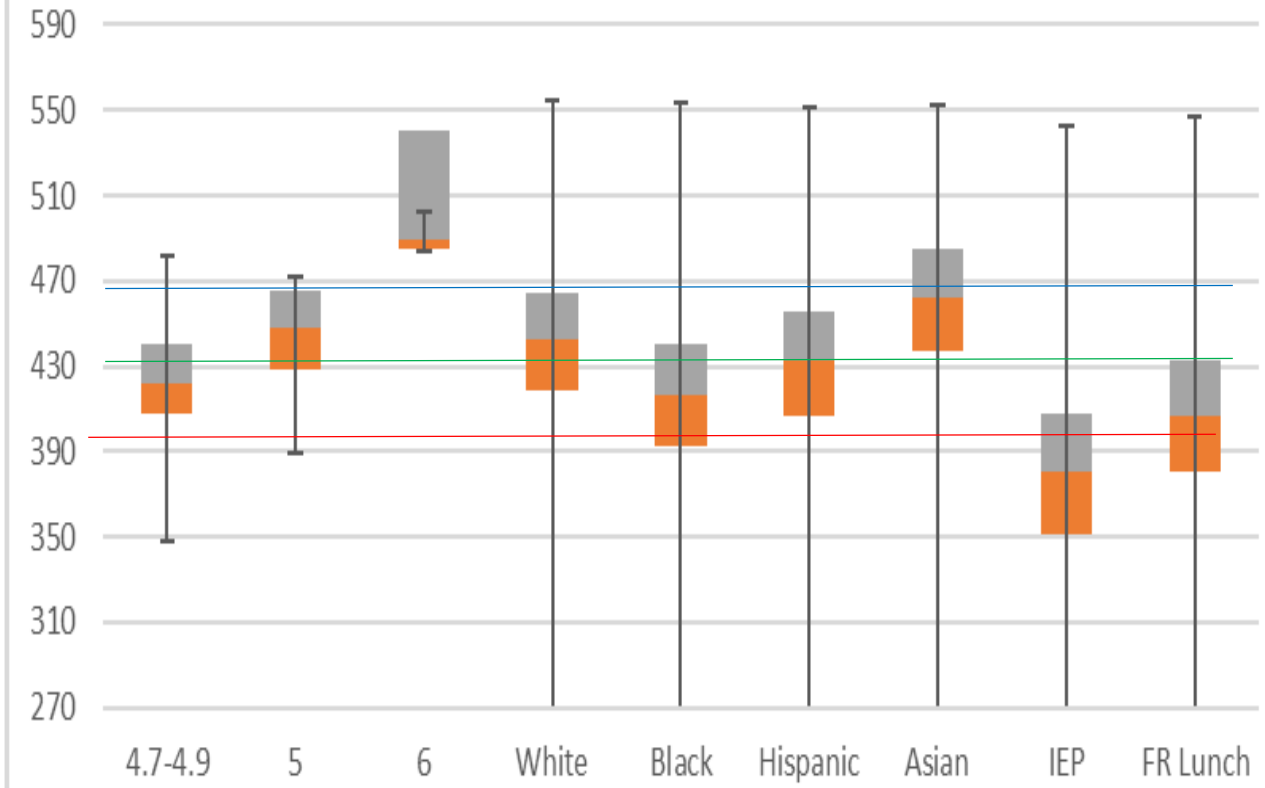
7th ELA



	4.7-4.9	5	6	White	Black	Hispanic	Asian	IEP	FR Lunch
Min	386	399	467	240	240	317	321	240	240
Q1	415.5	433	467.25	422	404	416	438	366	386
Median	431	448	468	445	428	441	463	388	414
Q3	445	460.25	491.25	466	450	462	483	415	441
Max	497	489	499	630	527	578	630	563	630

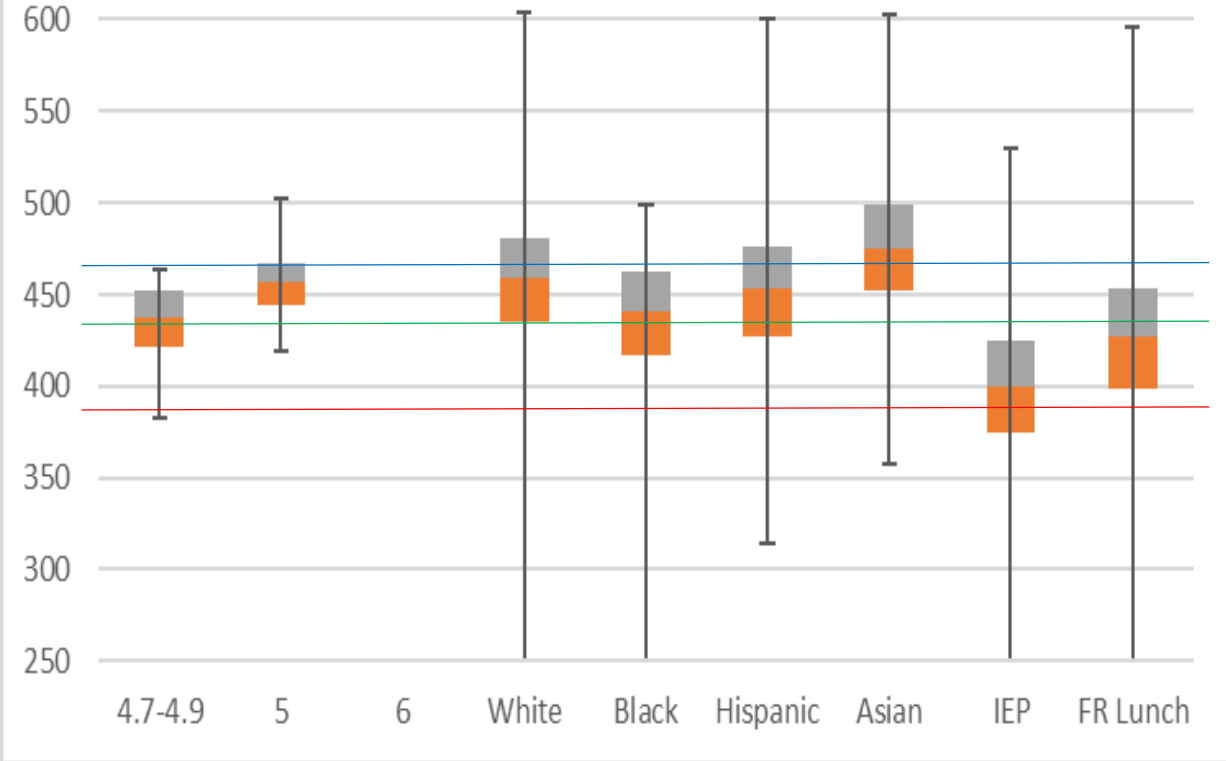
- 2nd Quartile
- 3rd Quartile
- Minimum score for Advanced
- Minimum score for Proficient
- Minimum score for Basic

7th Math



	4.7-4.9	5	6	White	Black	Hispanic	Asian	IEP	FR Lunch
Min	348	389	484	270	270	270	270	270	270
Q1	408.25	428.75	485.25	419	393	407	437	351	380
Median	422	448	489	442	416	433	462	380	407
Q3	440	465	540.75	464	440	456	485	408	433
Max	513	508	558	600	600	600	600	600	600

8th ELA



	4.7-4.9	5	6	White	Black	Hispanic	Asian	IEP	FR Lunch
min	383	419		250	250	314	358	250	250
Q1	421.75	444		435	416.5	427	452	375	399
Median	437	457		459	441	453	475	400	427
Q3	452	467		481	463	476	499	425	453
Max	494	525		650	546	650	650	580	650

- 2nd Quartile
- 3rd Quartile
- Minimum score for Advanced
- Minimum score for Proficient
- Minimum score for Basic