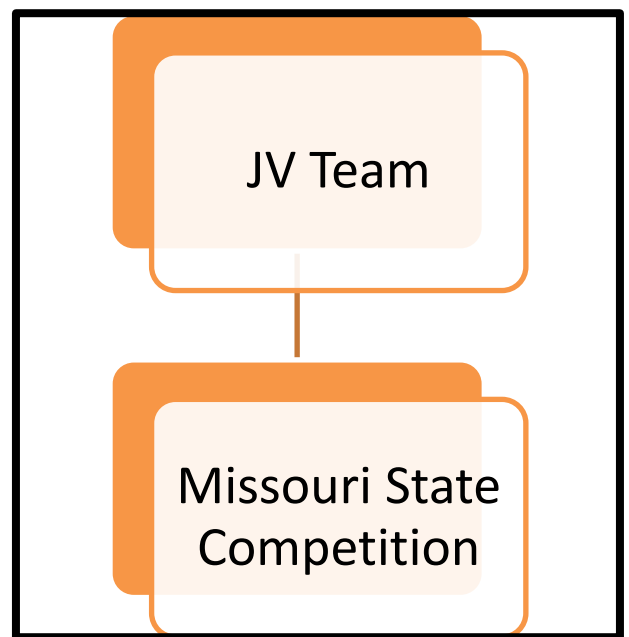
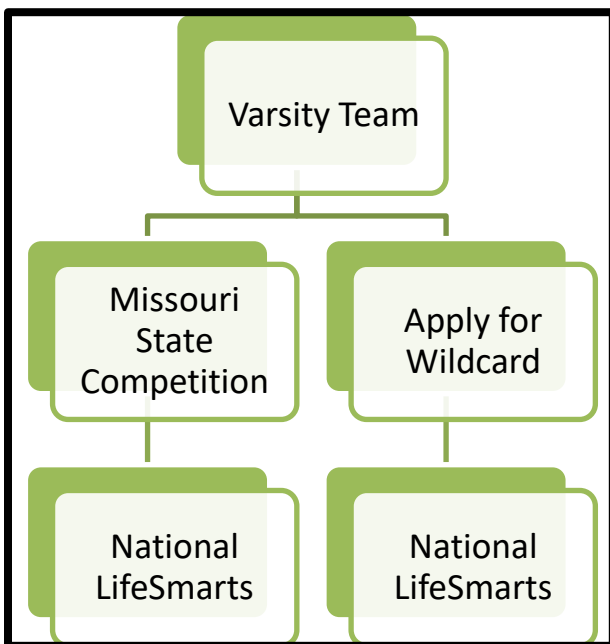
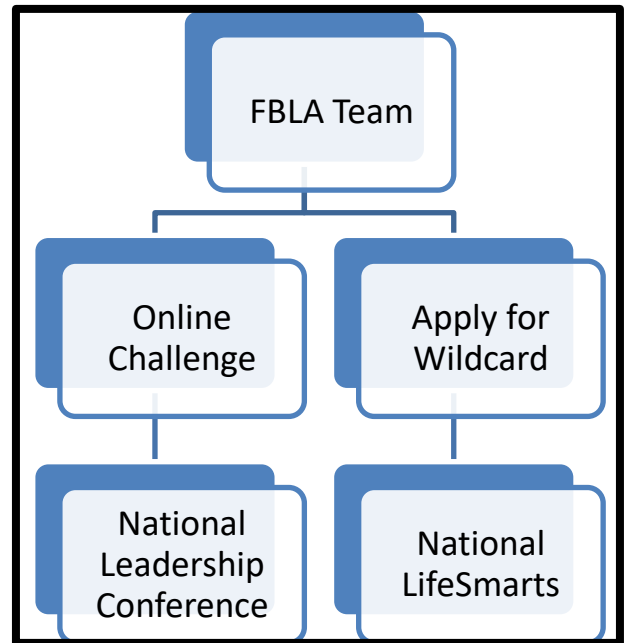
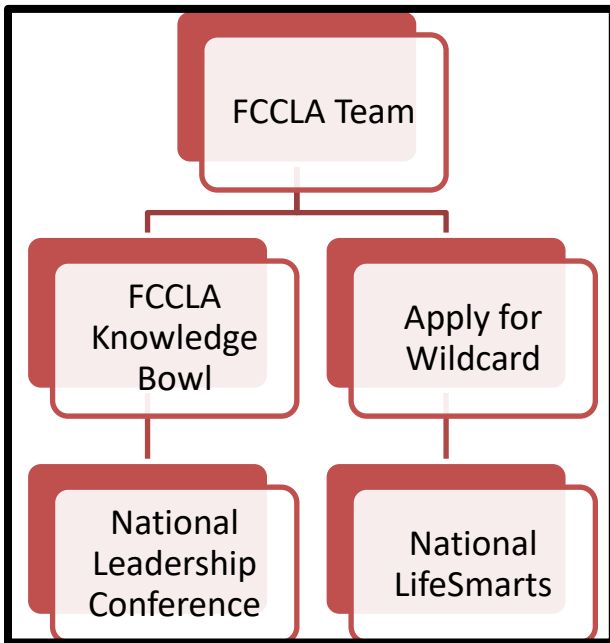




LifeSmarts

Learn it. Live it.

Missouri



Quiz Types

Competition Quizzes: There are 5 different quizzes that focus on each of the content areas as well as a pre-quiz and capstone quiz. All of these quizzes must be completed by at least 4 people on the team to qualify them to advance to the state competition (JV and Varsity Only). These can only be taken once and are only available during the competition season.

Practice Quizzes: Here you can see practice questions for each of the different content areas. You can use these as often as you like and throughout the year.

TeamSmarts Quizzes: 100-question multiple-choice quizzes focus on a different topic each month. Points are awarded for both accuracy and speed – so students must work together to develop a winning strategy. (FCCLA and FBLA teams have a chance at a \$100 prize each month. The winner of the February Challenge is invited to compete at National LifeSmarts – 1 FCCLA and 1 FBLA) (Quiz only available to the Team Captain)

Team Types

FBLA- For students grades 9-12 who are current affiliated members of FBLA

FCCLA- For students grades 9-12 who are current affiliated members of FCCLA

Varsity- For students grades 9-12

JV- For students in grades 6-8

Remember that students in grades 9-12 can be a member of one Varsity, one FBLA, and/or one FCCLA team each year.

For more information, contact: Donna Sharpe, Missouri Department of Elementary and Secondary Education, at donna.sharpe@dese.mo.gov or 573-522-6543