

Recruitment and Retention of Teachers in Missouri Public Schools

A Report to the Missouri General Assembly

**Prepared by the
Missouri Department of Elementary and Secondary Education
Division of Teacher Quality and Urban Education**

TABLE OF CONTENTS

Teacher Work Force Demographics	3
• Gender	
• Race, Ethnicity	
• Age	
• Experience	
Teacher Work Force Dynamics	6
• Teachers Entering the Work Force	
• Teachers Leaving the Work Force	
• Critical Teacher Shortage Areas, 1995-2007	
Recruitment and Retention Strategies	10
• Missouri’s Current Recruitment and Retention Initiatives	
• “Recruitment and Retention of Teachers: Suggested Strategies for School Districts”	

Missouri's Teacher Work Force

DEMOGRAPHICS

- **Gender**
- **Race, Ethnicity**
- **Age**
- **Experience**

2007 UPDATE
RECRUITMENT AND RETENTION OF TEACHERS IN MISSOURI PUBLIC SCHOOLS
A REPORT TO THE MISSOURI GENERAL ASSEMBLY

The statements below are an addition to the 2002, 2003, 2004, 2005, 2006 Updates and the December 2001 report *Recruitment and Retention of Teachers in Missouri Public Schools*.

Monitoring continues in several key areas:

- increasing the percent of minority teachers
- reviewing the age and experience of teachers for continued professional development and mentoring needs
- retaining teachers for a longer period of time

Teacher Workforce Demographics

Gender & Race, Ethnicity

- The total number of classroom teachers increased by 1.4% from 2006 to 2007.
- From 2006 to 2007 the total number of black teachers decreased by .3% and remained only 6.3 % of the total teaching workforce.

Age & Experience

- 50.6% of our teachers have 10 years or less of experience.
- This percentage is up .2% from 2006.

Teacher Workforce Dynamics

- District hiring rate decreased to 12.4%, down 0.6% from 2006.
- The percentage of district new hires that were first year teachers increased by .9%.
- District new hires from out of state decreased by 2.1%.
- District new hires from other districts increased by 1.3%.
- Teachers leaving the classroom after only one to three years decreased by 0.3%.
- Teachers leaving the classroom after only one to five years decreased by 0.9%.

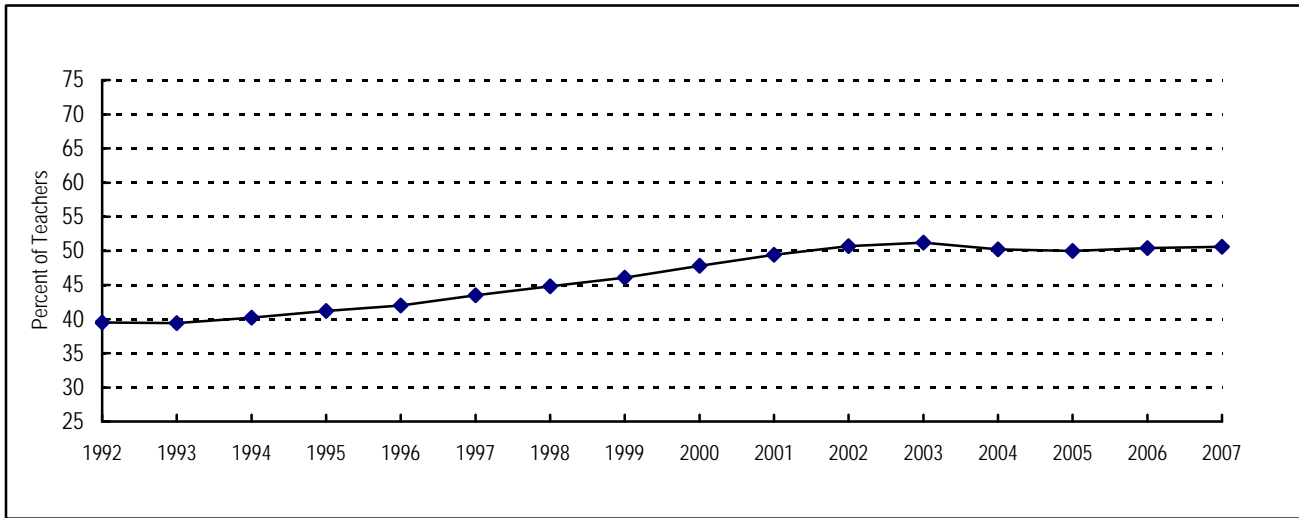
Gender and Race/Ethnicity Trends, 1995-2007

	1995	1996	1997	1998	1999	2000	2001	2002	2003	2004	2005	2006	2007
Total Teachers³	57,686	58,254	60,381	61,728	63,092	64,791	65,429	66,705	67,826	66,646	66,476	68,120	69,110
GENDER													
Female	77.3%	77.5%	77.7%	77.9%	78.1%	78.2%	78.3%	78.4%	78.3%	78.5%	78.6%	78.7%	78.8%
Male	22.7%	22.5%	22.3%	22.1%	21.9%	21.8%	21.7%	21.6%	21.7%	21.5%	21.4%	21.3%	21.2%
RACE/ETHNICITY													
WHITE	91.6%	91.8%	92.0%	92.1%	92.1%	91.9%	92.3%	92.2%	92.0%	92.1%	92.4%	92.5%	92.7%
Female	70.6%	71.0%	71.3%	71.6%	71.9%	71.8%	72.3%	72.3%	72.1%	72.3%	72.6%	71.0%	73.1%
Male	21.0%	20.9%	20.6%	20.5%	20.3%	20.1%	20.0%	19.9%	19.9%	19.8%	19.8%	19.6%	19.6%
BLACK	7.7%	7.5%	7.4%	7.2%	7.2%	7.4%	7.0%	7.0%	7.2%	7.0%	6.7%	6.6%	6.3%
Female	6.2%	6.1%	5.9%	5.8%	5.7%	5.8%	5.5%	5.5%	5.6%	5.5%	5.3%	5.2%	4.9%
Male	1.5%	1.4%	1.4%	1.4%	1.4%	1.6%	1.5%	1.5%	1.6%	1.5%	1.5%	1.4%	1.4%
OTHER⁴	0.6%	0.7%	0.7%	0.7%	0.7%	0.7%	0.7%	0.7%	0.8%	0.9%	0.8%	0.9%	1.0%

Age Trends, 1995-2007

AGE GROUP ⁵	1995	1996	1997	1998	1999	2000	2001	2002	2003	2004	2005	2006	2007
20-29	13.5%	14.3%	15.2%	15.9%	16.4%	16.7%	16.6%	17.2%	17.0%	16.8%	16.8%	20.0%	23.2%
30-39	24.3%	23.6%	23.3%	23.1%	23.4%	23.9%	24.6%	25.2%	24.5%	26.0%	26.4%	26.1%	26.1%
40-49	38.9%	37.9%	36.0%	34.3%	32.3%	30.7%	29.3%	27.8%	27.9%	26.0%	25.4%	24.6%	25.1%
50-59	19.5%	20.7%	22.1%	23.3%	24.4%	25.1%	25.8%	26.0%	25.5%	26.8%	26.5%	24.9%	22.3%
60+	3.8%	3.6%	3.5%	3.4%	3.5%	3.6%	3.6%	3.8%	4.0%	4.4% ³	4.9%	4.5%	3.2%

Percent of Teachers with 0-10 Years of Experience
1992 to 2007



Experience Trends, 1995-2007

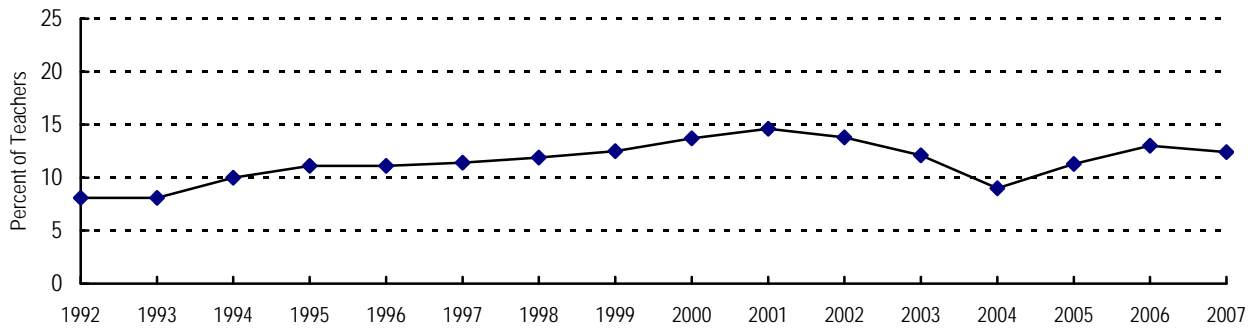
YEARS OF EXPERIENCE⁶	1995	1996	1997	1998	1999	2000	2001	2002	2003	2004	2005	2006	2007
0-10	41.2%	42.0%	43.5%	44.8%	46.1%	47.8%	49.4%	50.7%	51.2%	50.2%	50.0%	50.4%	50.6%
0-5	23.5%	24.5%	26.3%	27.6%	28.5%	29.7%	30.6%	31.2%	30.8%	28.8%	28.2%	27.9%	27.8%
6-10	17.8%	17.5%	17.2%	17.2%	17.6%	18.1%	18.8%	19.5%	20.4%	21.4%	21.8%	22.6%	22.8%
11-20	31.6%	30.5%	29.2%	27.9%	27.1%	26.0%	25.5%	25%	24.9%	25.9%	26.6%	26.9%	27.2%
21-30	23.6%	24.0%	23.7%	23.6%	22.9%	22.0%	21.2%	20%	19.2%	19.1%	18.5%	17.7%	17.1%
31+	3.6%	3.6%	3.6%	3.8%	4.0%	4.2%	3.9%	4.4%	4.7%	4.9%	4.9%	5.0%	5.1%

Missouri's Teacher Work Force

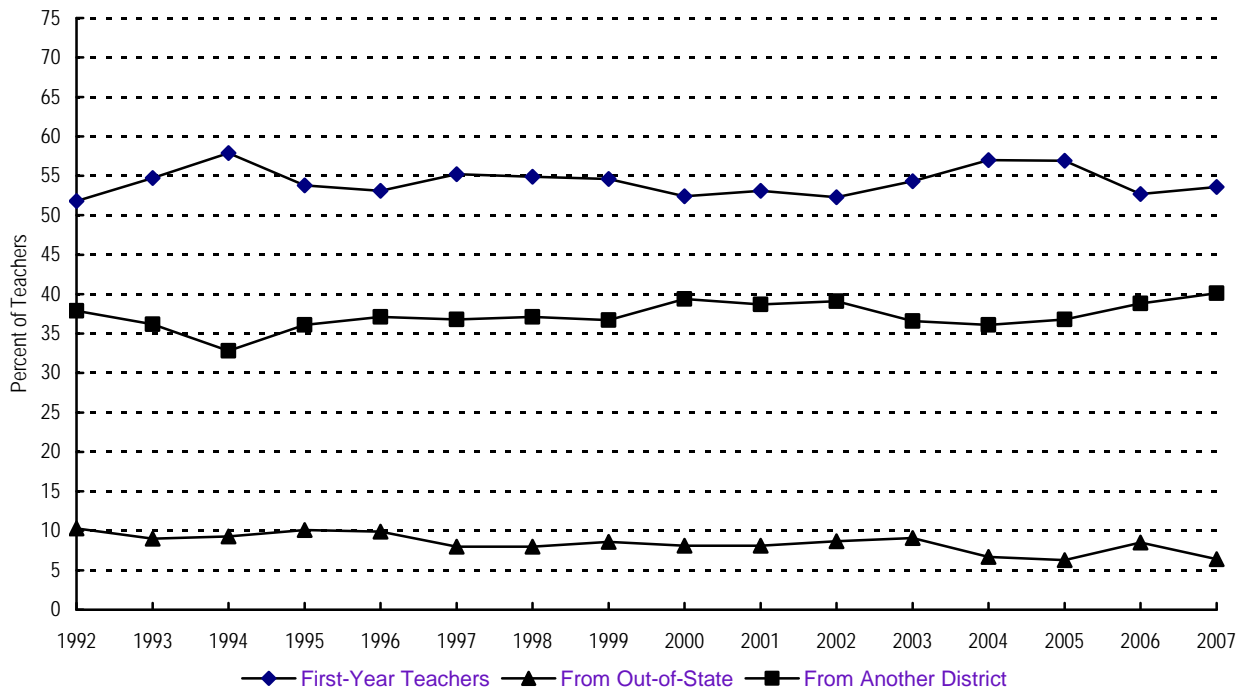
DYNAMICS

- **Teachers Entering the Work Force**
- **Teachers Leaving the Work Force**
- **Shortage Areas**

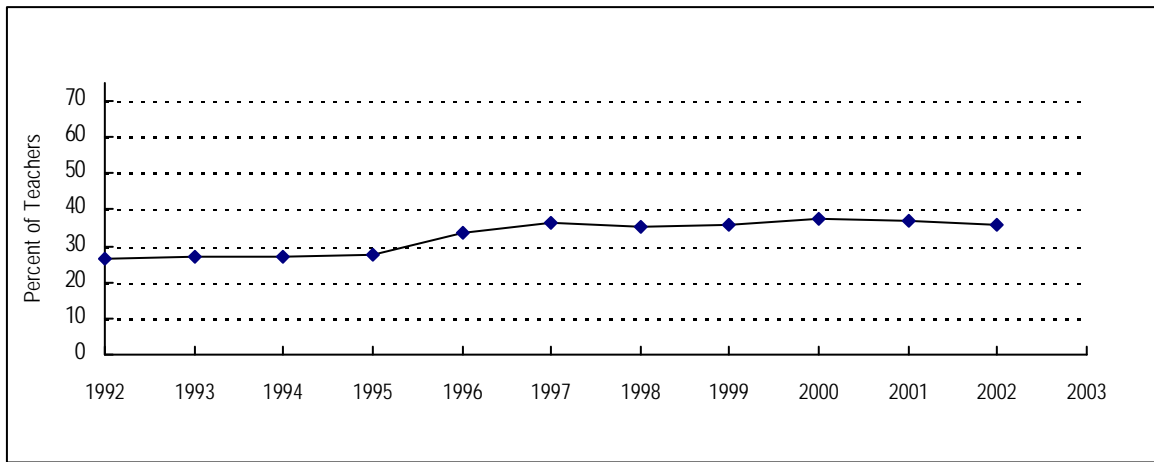
Hiring Rate 1992 to 2007



District New Hires 1992 to 2007



Teachers Leaving Missouri's Public School Work Force After 1-5 Years 1992 to 2002



Teachers Leaving Missouri's Public School Work Force, 1995-2007

	1995	1996	1997	1998	1999	2000	2001	2002	2003	2004	2005	2006	2007
Total Teachers	57,686	58,254	60,381	61,728	63,092	64,791	65,429	66,705	67,826	66,646	66,476	68,120	69,110
First-Year Teachers	3,429	3,424	3,804	4,030	4,313	4,646	5,064	4,802	4,439	3,428	4,285	4,668	4,597
<i>% of First-Year Teachers who left the classroom¹³--</i>													
After 1-3 Years	18.6%	21.7%	24.3%	25.3%	24.8%	26.0%	29.2%	30.3%	27.0%	26.7%			
After 1-5 Years	27.7%	33.8%	36.5%	35.1%	35.9%	37.5%	36.9%	36.0%					

Teachers Entering Missouri's Public School Work Force, 1995-2007

	1995	1996	1997	1998	1999	2000	2001	2002	2003	2004	2005	2006	2007
Total Teachers	57,686	58,254	60,381	61,728	63,092	64,791	65,429	66,705	67,826	66,646	66,476	68,120	69,110
District New Hires⁷	6,375	6,454	6,891	7,340	7,896	8,859	9,529	9,189	8,176	6,012	7,531	8,866	8,579
Teacher Hiring Rate⁸	11.1%	11.1%	11.4%	11.9%	12.5%	13.7%	14.6%	13.8%	12.1%	9.0%	11.3%	13.0%	12.4%
<i>As a percent of Total Teachers, District New Hires who are --</i>													
First-Year Teachers⁹	5.9%	5.9%	6.3%	6.5%	6.8%	7.2%	7.7%	7.2%	6.5%	5.1%	6.5%	6.9%	6.7%
From Out-of-State¹⁰	1.1%	1.1%	0.9%	0.9%	1.1%	1.1%	1.2%	1.2%	1.1%	0.6%	0.7%	1.1%	0.8%
From Another District¹¹	4.0%	4.1%	4.2%	4.4%	4.6%	5.4%	5.6%	5.4%	4.4%	3.3%	4.2%	5.1%	5.0%
<i>Percent of District New Hires who are--</i>													
First-Year Teachers	53.8%	53.1%	55.2%	54.9%	54.6%	52.4%	53.1%	52.3%	54.3%	57%	56.9%	52.7%	53.6%
From Out-of-State	10.1%	9.9%	8.0%	8.0%	8.6%	8.1%	8.1%	8.7%	9.1%	6.7%	6.3%	8.5%	6.4%
From Another District	36.1%	37.1%	36.8%	37.1%	36.7%	39.4%	38.7%	39.1%	36.6%	36.1%	36.8%	38.8%	40.1%
Re-entrants¹²	3.3%	3.1%	4.1%	3.1%	3.2%	3.8%	3.5%	3.6%	3.4%	2.8%	3.0%	3.6%	3.4%

Missouri's Teacher Workforce

Teacher Shortage Areas

Each year, the Missouri Department of Elementary and Secondary Education reports to the U.S. Department of Education on teacher shortage areas, by subject. The federal agency forgives Perkins college loans of qualified teachers, based on these reports. Lists of shortage areas through 200 were identified in an annual survey of Missouri school administrators, conducted by Southwest Missouri State University. Future lists will be based on shortage areas that are reported by administrators through the state's Core Data Collection System.

1997-98	1998-99	1999-00	2000-01 & 2001-02	2002-03	2003-04	2004-05	2005-06	2006-07
Agriculture Computer Science English Speakers of other Languages Foreign Languages Industrial Arts Journalism Music, instrumental Reading (special) Science Special Education Speech/Language Pathologist Speech/Theatre	Agriculture English Speakers of Other Languages Foreign Language Gifted Industrial Tech. Journalism Mathematics, middle school Music, instrumental Reading (special) Science Special Education Speech/Theatre	Agriculture English Speakers of Other Languages Foreign Language Gifted Industrial Tech. Journalism Mathematics, sec. Mathematics, middle school Music, instrumental Reading (special) Science Special Education Speech/Language Specialist Speech/Theatre Technology Ed	Agriculture Art Business Education Driver's Education English for Speak. of Other Languages Foreign Language Gifted Health Industrial Tech. Journalism Mathematics, sec. Mathematics, middle school Music, instrumental Music, vocal Reading (special) Science Special Education Speech/Theatre Technology Ed.	Agriculture Art Biology Business Ed Chemistry Drivers Ed ESOL Foreign Language Gifted Industrial Tech. Journalism Marketing Mathematics Music, Instrumental Music, Vocal Physics ROTC Science all areas Special Education All Areas Special Reading Speech/Language Specialist Speech/Theatre Technology Education	Agriculture Art Biology Business Education Chemistry Drivers Education Earth Science English/Speakers of Other Language Foreign Language Gifted Industrial Technology Instrumental Music Journalism Marketing Mathematics Physics ROTC Science Family/Consumer Middle School Special Education All Areas Special Reading Speech/Language Specialist Speech/Theatre Technology Ed	Counselors (Elem./Secondary) Drivers Education ESOL Family/Consumer Science Foreign Languages (all areas) Gifted Industrial Technology Journalism Library Media Specialist Marketing Mathematics Music-Vocal ROTC School Psychological Examiner School Psychologist Science (all areas) Special Education (all areas) Special Reading Speech/Language Specialist Technology Ed Vocational (Director/Supervisor)	Counselors (Elem./Secondary) Family/Consumer Science Foreign Language (all areas) Gifted Industrial Tech Journalism Library Media Specialist Marketing Mathematics Music-Vocal ROTC School Psychological Examiner School Psychologist Science (all areas) Special Education (all areas) Special Reading Speech/Language Specialist	Counselor (Elem) Early Childhood (B-3) ESOL Family and Consumer Science Foreign Language French German Spanish Gifted Industrial Technology Journalism Mathematics Music (Vocal) ROTC School Psychological Examiner School Psychologist Science Biology Chemistry Earth Science Physics Special Education (all areas) Special Reading Speech/Language Specialist