



Show-Me

The "Official" Newsletter of Literacy in Missouri

SEPTEMBER 2011

ISSUE NO. 194

Literacy.....

GED 21st Century Initiative Update

This article was reprinted from the official GED Testing Service website at: www.acenet.edu



GED

TESTING

SERVICE®



The GED 21st Century Initiative Update
San Francisco, CA
April 2011

The mission of the "Show-Me Literacy Newsletter is to provide professional information-sharing, resources and news about adult education and literacy.

➤ Overview

- Background
- The GED 21st Century Initiative
- Resources
- Next Steps

www.GEDtestingervice.com



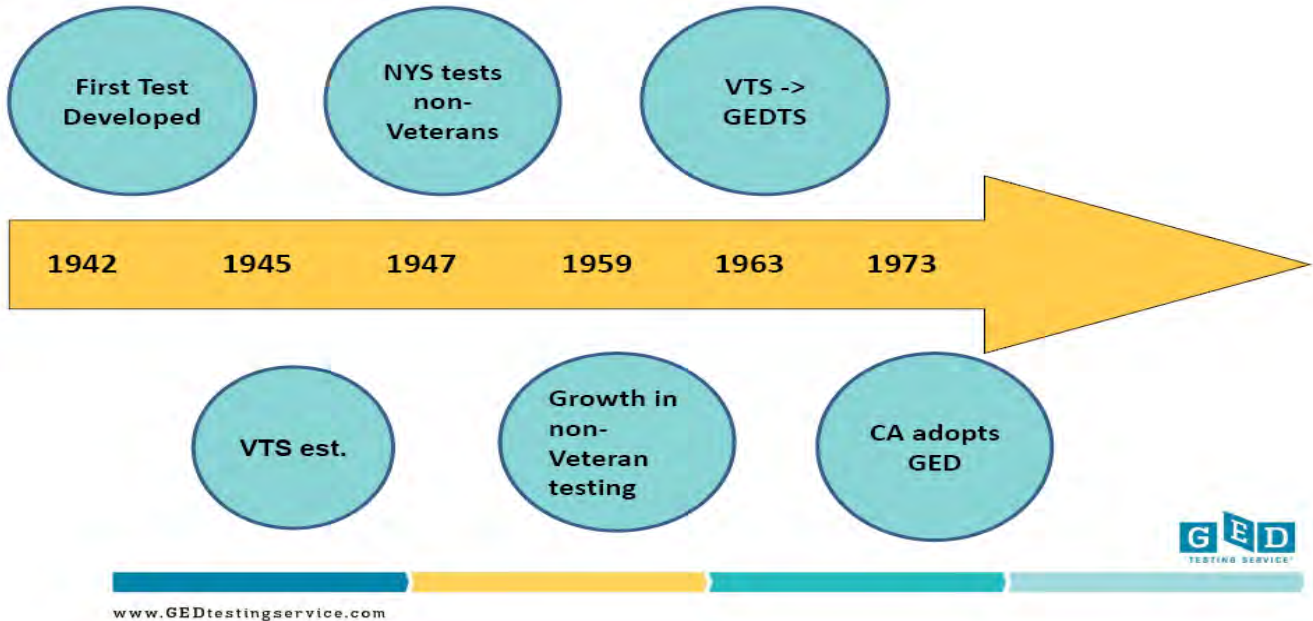
2

➤ A BRIEF HISTORY

www.GEDtestingervice.com



Historical Timeline



4

Historical Background: The Test Series

- First series: 1942-1977
- Second series: 1978-1987
- Third series: 1988-2001
- Fourth series: 2002-Present
- Language versions: American English, Canadian English, Spanish (based on US version) and French (based on Canadian version)



5

▶ The Numbers Behind the History

How many credentials have been awarded since 1942?

- **18 million**

In a typical year, how many test takers attempt some portion of the GED test?

- **More than 770,000 individuals**

How many people *completed* the entire battery of tests in 2009?

- **683,000 individuals**

How many people earned an equivalency credential in 2009?

- **472,000 (about 69% of those completing exams)**



www.GEDtesting.com

6

▶ Who Takes the GED® Test?

- On average, they are nearly 26 years old (for the first time since the mid 1990s).
- Range in age from 16 to more than 90 years old.
- Most (71%) have completed the 10th Grade.
- 79% are first time test-takers.
- GED test takers are predominately male (58%).
- In 2009, the ethnicity of candidates who took the test:
 - 50% White
 - 25% African American
 - 20% Hispanic



www.GEDtesting.com

7

» Among Those Who Pass ...

- Approximately **60 percent** report furthering their education as a reason for testing.
- A key finding from *Crossing the Bridge, The Year One Report*, reveals that **42.9 percent** of the 2003 cohort of GED passers enrolled in postsecondary education by September 2009.

www.GEDtestingservice.com



8

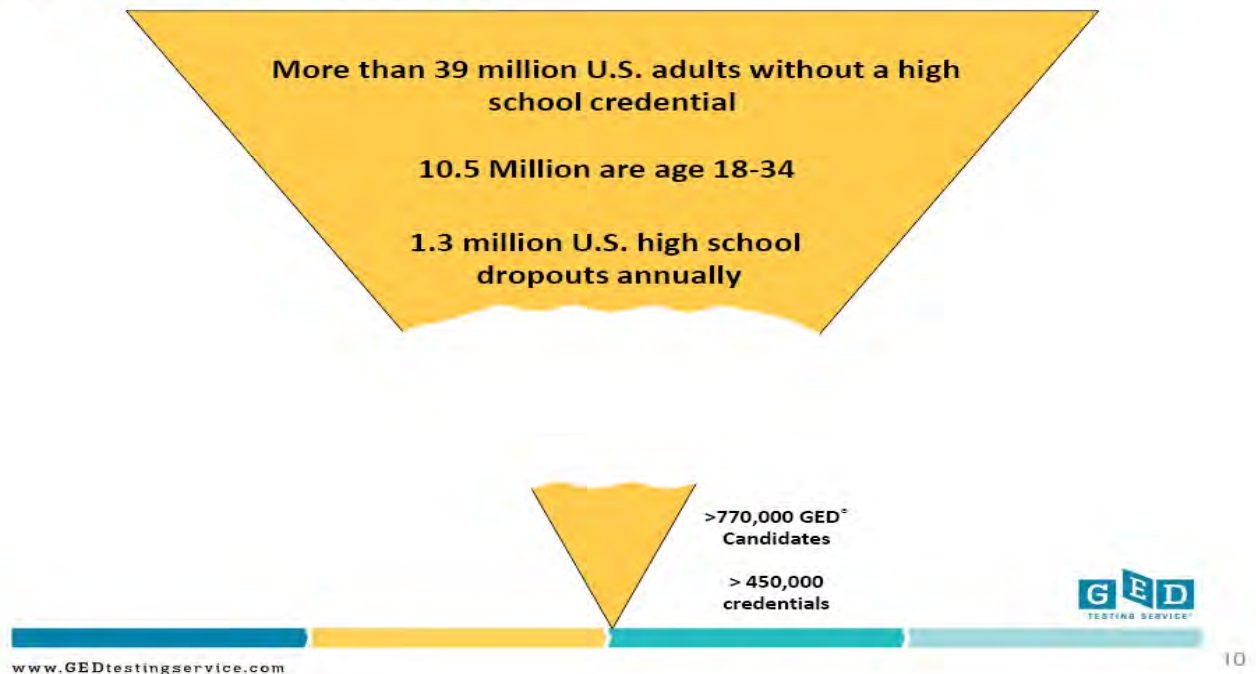
» THE ENVIRONMENT & OUR RESPONSE: THE GED® 21ST CENTURY INITIATIVE

www.GEDtestingservice.com



9

The GED® Reality



Today's Driving Forces

- National agenda focused on educational reform
- Clear evidence of declining American competitiveness—and educational attainment
- Push for Common Core State Standards (CCSS)
- Emergence of workforce readiness credentials
- Traditional high school system under-performing on all the readiness benchmarks



What's Ahead

- A new test
- An integrated system facilitating transitions
- Diagnostics and additional tools
- Use technology-based delivery platforms (CBT)
- And...the new system will debut in 2014.

The GED 21st Century Initiative's Goal

Facilitate pathways to achieve career & college readiness and increase PSE attainment & career success



Nationally Accessible Preparation Programs

Facilitate development of broadly accessible, multi-platform, accelerated approach to learning

Next-gen GED Test

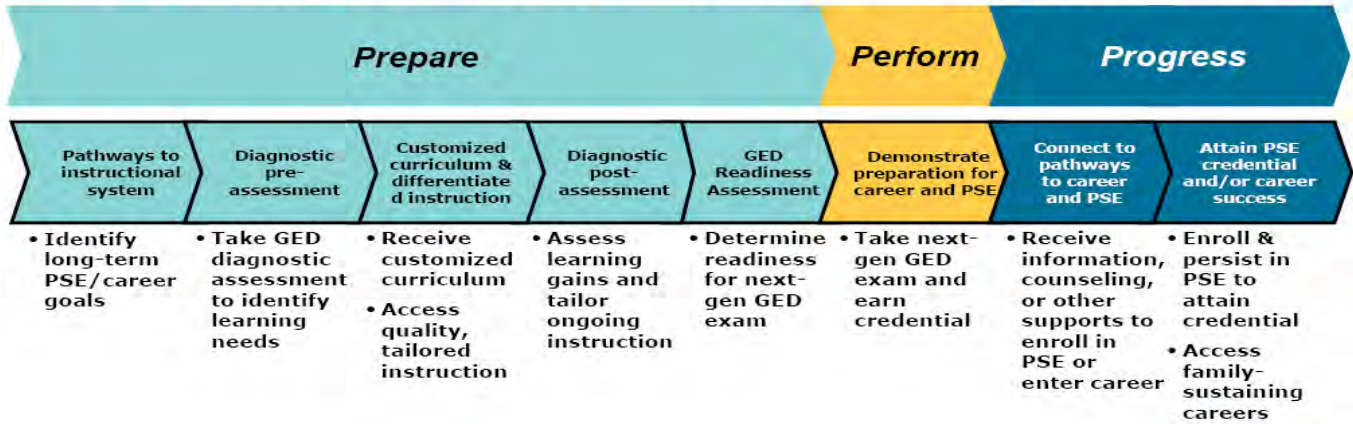
Test aligned with CCSS, certifying preparedness for careers & college

Post-test Transition Network

Foster creation of a comprehensive network for transitions

▶ The GED 21st Century Initiative's Goal

Facilitate pathways to achieve career & college readiness and increase PSE attainment & career success



▶ The 21st Century GED Assessment

- Launch in 2014
- Aligned with national standards for career and college readiness
- Measure factors beyond pass/fail
- Introduce multiple performance standards/ multiple credentials to communicate information about what a test-taker knows and can do
- Implement computer-based testing delivery

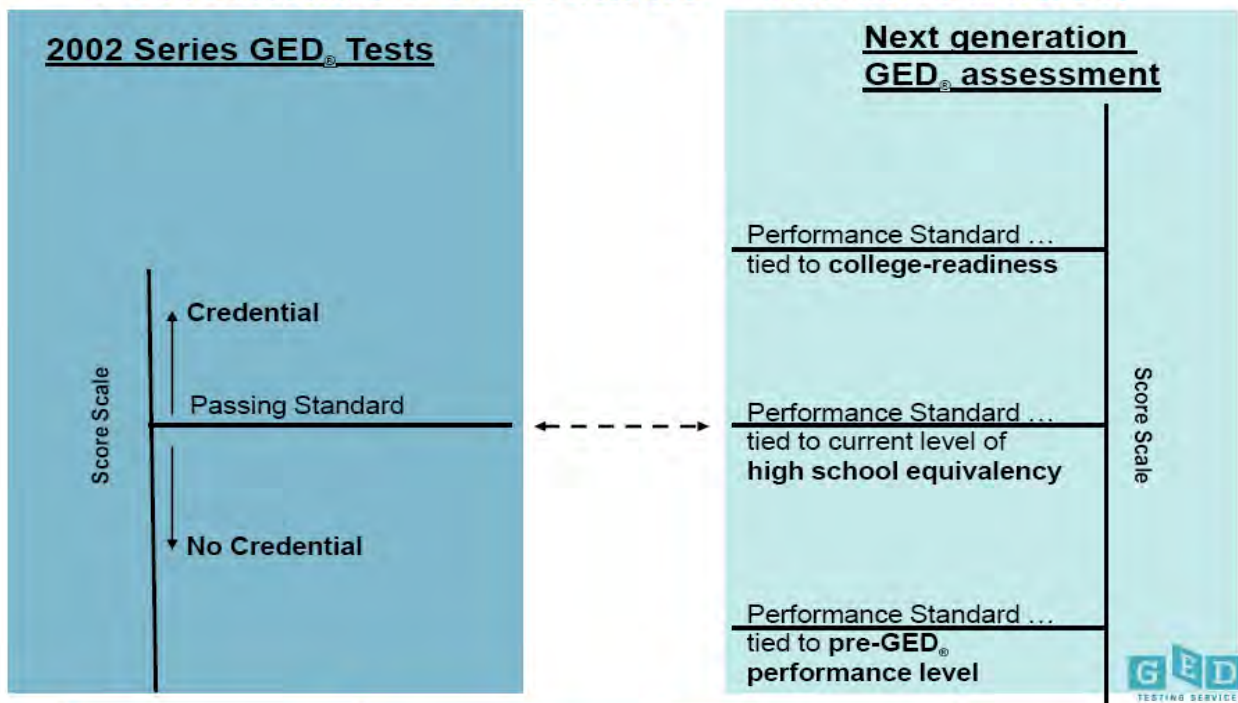


Performance Levels vs. Credential

- Performance Levels
 - Convey information about strengths and areas of developmental need with within subject-area tests
 - Graduated profile of performance within a subject-area
- GED credential
 - Combines performance levels across subject-area tests
 - Graduated profile of performance across subject-areas



Next Generation Assessment Performance Standards – An Illustration



➤ CBT: The Future of GED® Testing

www.GEDtesting-service.com



18

➤ GED Testing: Today's Challenges

- Paper-based process is labor-intensive
- Multiple approaches to test delivery, scoring, data management, and reporting--making it difficult to achieve economies of scale
- Limited access (proximity, testing center hours, and scheduling)
- Time to receive credential after the exam
- Lack of flexibility in making changes to the exam

www.GEDtesting-service.com



19

➤ GED Testing: Today's Challenges (cont.)

- Current testing program consumes significant jurisdictional resources
 - People
 - Money
 - Time
- Maintaining test security requires inordinate amounts of resources
- Technology absent from key processes that could be automated



➤ Today's Charge

We need to serve **more** adult learners with a **better** support, assessment, and transition system.



What CBT Is...and Is Not

- What CBT is...
 - Standardized mode of test delivery that includes technology-based tools for data management, reporting and enhanced security procedures
- What CBT is not...
 - An automated system that completely replaces human interaction or judgment
 - Online testing



Computer-based Testing (CBT): Why Now?

- Test-takers need increased access
 - Only testing 2% of eligible population
 - No marked increase in testing over past 8 years
- National & local governments requiring more efficient processes
- Well-traveled road with many successful examples
- Prepares the way for the new GED assessment



Why Computer-Based Testing (CBT)?

- Provides adult learners with:
 - Rapid turnaround of test results
 - Greater choices on when and where to take the tests
 - Ease of registration
 - Increased test security
- Part of GED Testing Service's commitment to serving more test-takers, and providing a better, more reliable testing experience.



Computer-based Testing (CBT)

- Necessary for measurement of the content covered on the next-generation test
- Will be gradually implemented nationwide over the next 3 years
- Benefits include
 - Increased access for test-takers on demand
 - Faster score reporting
 - Better data management and reporting tools
 - Flexible registration options
 - Improved security
 - Better use of local resources



» What's In It For Me?

- Help more adult learners and test-takers with an improved system
- Partner with GED Testing Service on a major national initiative
- Bring local expertise to discussion on solutions for access, services, and advocacy for adult learners
- Serve more adult learners



» Resources Available

- www.GEDcibt.org Your resource for staying current with computer-based testing developments
- *The Community* The monthly e-newsletter that will keep you in the know
- www.GEDtestingservice.com Your resource for keeping up with the latest developments in the GED 21st Century Initiative



▶ What You Can Do Now

- Access the resources available on a regular basis.
- Keep doing what you're doing to provide quality paper-based testing and be prepared to work collaboratively with your state directors for CBT implementation.
- Stay tuned for more information about the new assessment system this summer.



www.GEDtestingservice.com

28

▶ The GED Testing Service is on the move!

- Developing a world-class assessment system for adults
- Working with educational providers to meet the learning needs of adults
- Working with business and industry to build and certify the skills of the future workforce



www.GEDtestingservice.com

Questions and Comments

Debi Faucette

Senior Director, Field Operations

GED Testing Service

Debi.Faucette@GEDTestingService.com

(202) 939-9731



www.GEDtestingservice.com

The Department of Elementary and Secondary Education does not discriminate on the basis of race, color, national origin, sex, disability, or age in its programs and activities. Inquiries related to Department programs and to the location of services, activities, and facilities that are accessible by persons with disabilities may be directed to the Jefferson State Office Building, Civil Rights Compliance (Title VI/Title IX/504/ADA/Age Act), 5th Floor, 205 Jefferson Street, Jefferson City, MO 65102-0480; telephone number 573-526-4757 or Relay Missouri 800-735-2966.

This publication was produced pursuant to a grant from the Director, Adult Education & Literacy, Missouri Department of Elementary & Secondary Education, under the authority of Title II of the Workforce Investment Act. The opinions herein do not necessarily reflect the position or policy of the Missouri Department of Elementary & Secondary Education or the U.S. Office of Education. No official endorsement by these agencies is inferred or implied.